



Chipsmall Limited consists of a professional team with an average of over 10 year of expertise in the distribution of electronic components. Based in Hongkong, we have already established firm and mutual-benefit business relationships with customers from,Europe,America and south Asia,supplying obsolete and hard-to-find components to meet their specific needs.

With the principle of “Quality Parts,Customers Priority,Honest Operation,and Considerate Service”,our business mainly focus on the distribution of electronic components. Line cards we deal with include Microchip,ALPS,ROHM,Xilinx,Pulse,ON,Everlight and Freescale. Main products comprise IC,Modules,Potentiometer,IC Socket,Relay,Connector.Our parts cover such applications as commercial,industrial, and automotives areas.

We are looking forward to setting up business relationship with you and hope to provide you with the best service and solution. Let us make a better world for our industry!



## Contact us

Tel: +86-755-8981 8866 Fax: +86-755-8427 6832

Email & Skype: info@chipsmall.com Web: www.chipsmall.com

Address: A1208, Overseas Decoration Building, #122 Zhenhua RD., Futian, Shenzhen, China



COUNT	DESCRIPTION OF REVISIONS	BY	CHKD	DATE	COUNT	DESCRIPTION OF REVISIONS	BY	CHKD	DATE
✓				..	✓				..
✓				..	✓				..

PARTS NO.	HRS NO.	CONTACTS	A	B	C
DF13-10DS-1.25C	CL536-0550-2	10	10.4	8.0	5.0
DF13-20DS-1.25C	CL536-0555-6	20	16.65	14.25	11.25
DF13-30DS-1.25C	CL536-0560-6	30	22.9	20.5	17.5
DF13-40DS-1.25C	CL536-0565-0	40	29.15	26.75	23.75

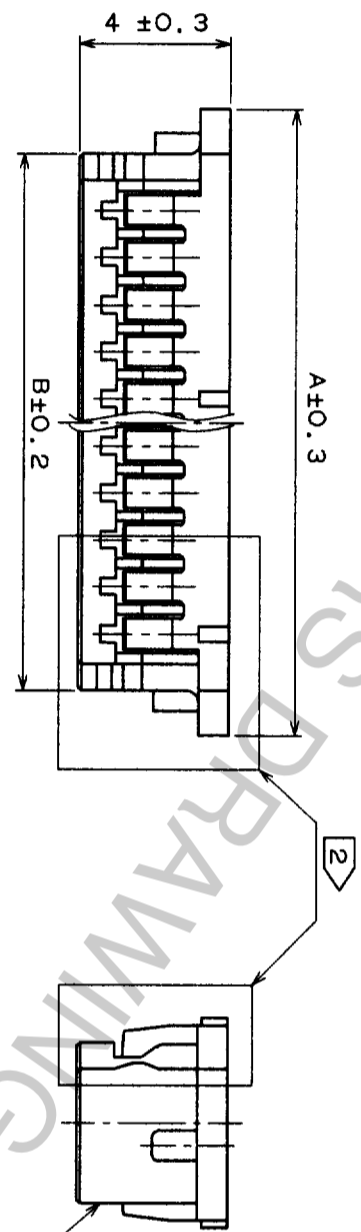
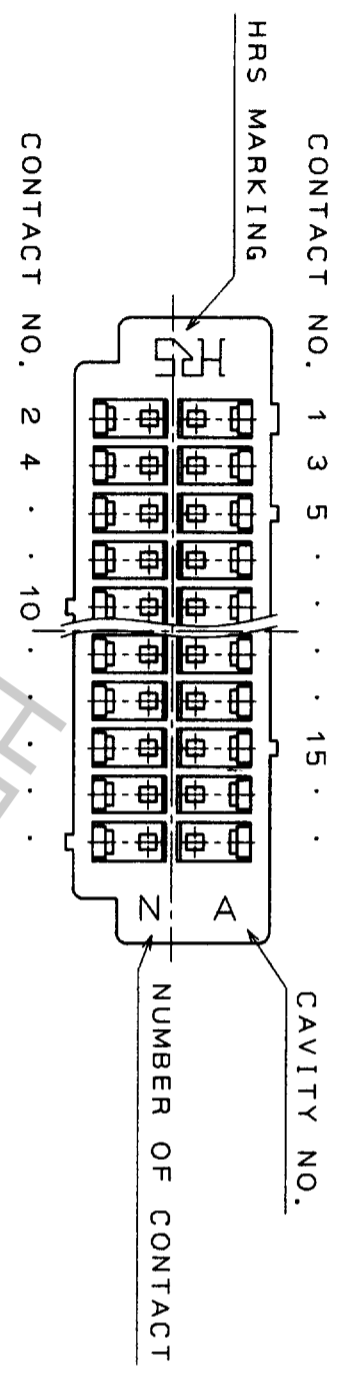
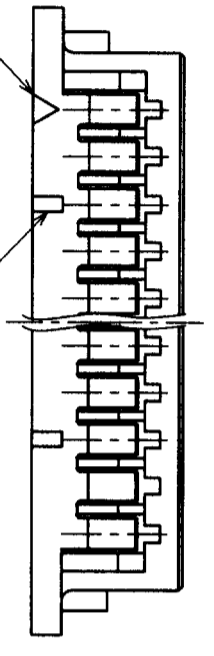
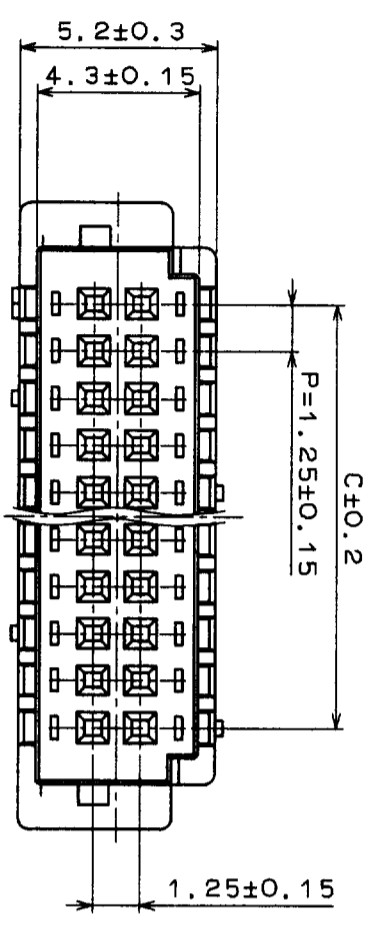
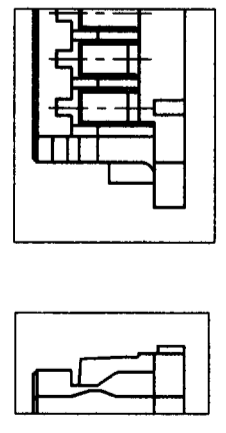


FIG. A



CONTACT NO. 1 ON EVERY FIVE CONTACTS

NOTES 1 100 CONNECTORS ARE IN ONE PACK  
 2 LANCE CONFIGURATION, 30 AND 40 CONTACTS SHALL BE FIG. A.

NO.	MATERIAL	FINISH, REMARKS	NO.	POLYAMIDE	(BEIGE) UL94V-0
1			1		

NO. MATERIAL FINISH, REMARKS	DRAWN DESIGNED CHECKED APPROVED RELEASED
CODE NO. (OLD)	H. IGARASHI 95.3.14
	Mr. Nobumasa Higashimura 95.3.15
	95.3.16
	95.3.16

DRAWING NO. EDC3-160109-02	PART NO. DF13-*DS-1.25C
SCALE 5:1	CODE NO. CODE NO. SHALL BE IN ACCORDANCE WITH TABLE
UNITS MM	

TO