



Chipsmall Limited consists of a professional team with an average of over 10 year of expertise in the distribution of electronic components. Based in Hongkong, we have already established firm and mutual-benefit business relationships with customers from,Europe,America and south Asia,supplying obsolete and hard-to-find components to meet their specific needs.

With the principle of “Quality Parts,Customers Priority,Honest Operation,and Considerate Service”,our business mainly focus on the distribution of electronic components. Line cards we deal with include Microchip,ALPS,ROHM,Xilinx,Pulse,ON,Everlight and Freescale. Main products comprise IC,Modules,Potentiometer,IC Socket,Relay,Connector.Our parts cover such applications as commercial,industrial, and automotives areas.

We are looking forward to setting up business relationship with you and hope to provide you with the best service and solution. Let us make a better world for our industry!



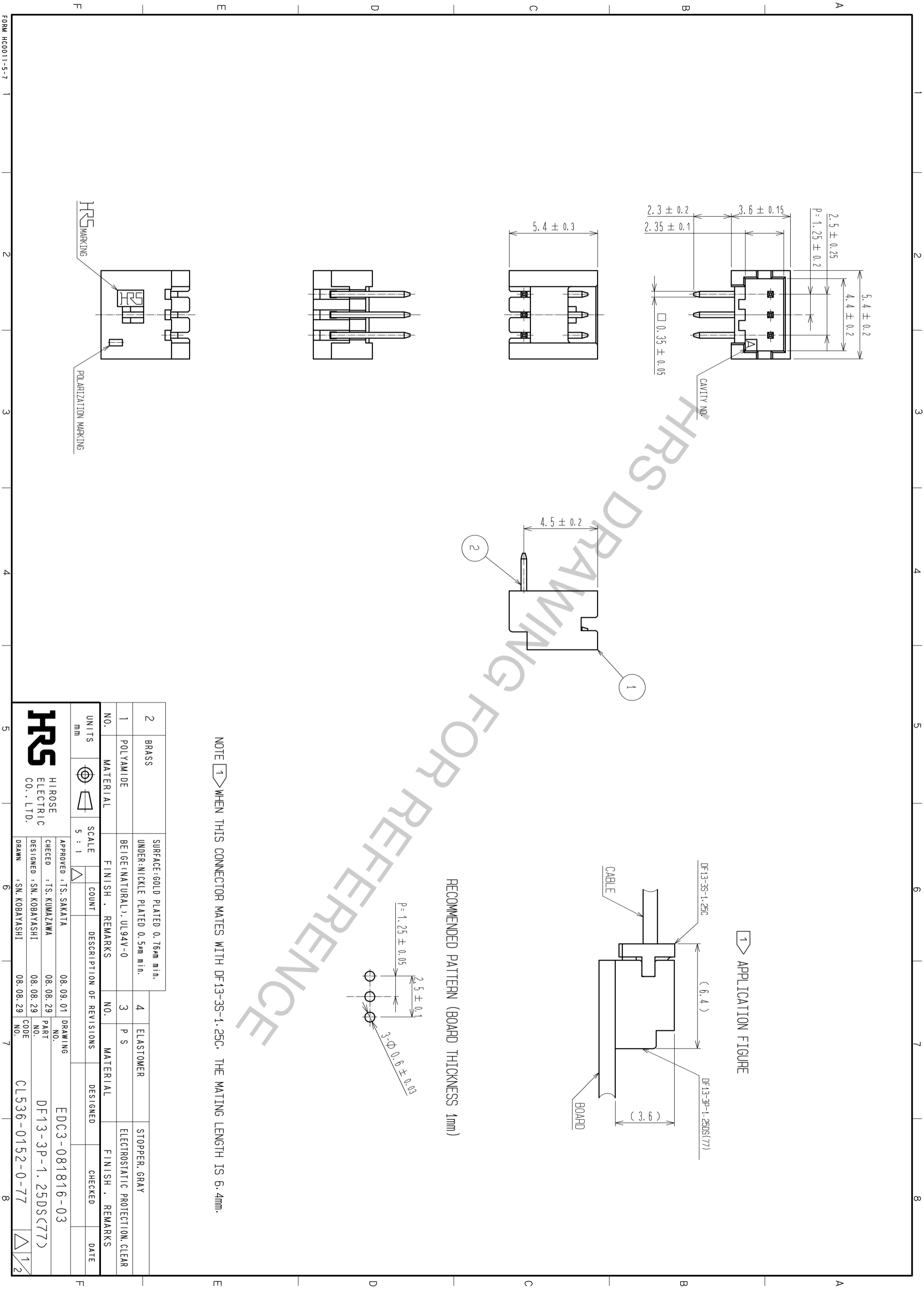
Contact us

Tel: +86-755-8981 8866 Fax: +86-755-8427 6832

Email & Skype: info@chipsmall.com Web: www.chipsmall.com

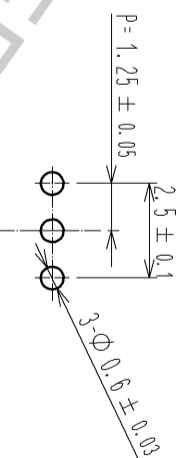
Address: A1208, Overseas Decoration Building, #122 Zhenhua RD., Futian, Shenzhen, China



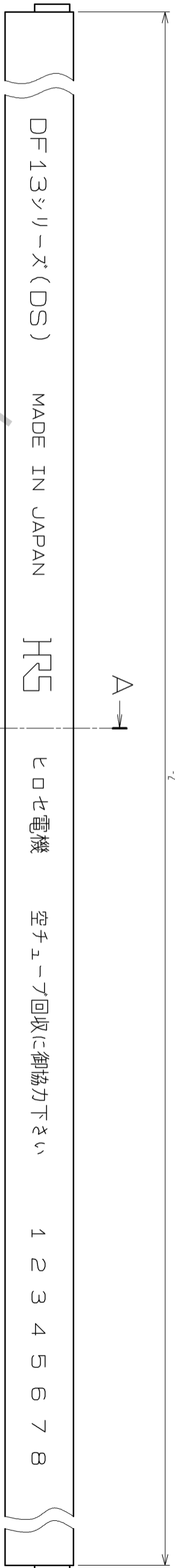
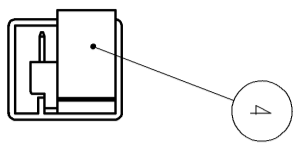


NOTE 1 WHEN THIS CONNECTOR MATES WITH DF13-3S-1.25C, THE MATING LENGTH IS 6.4mm.

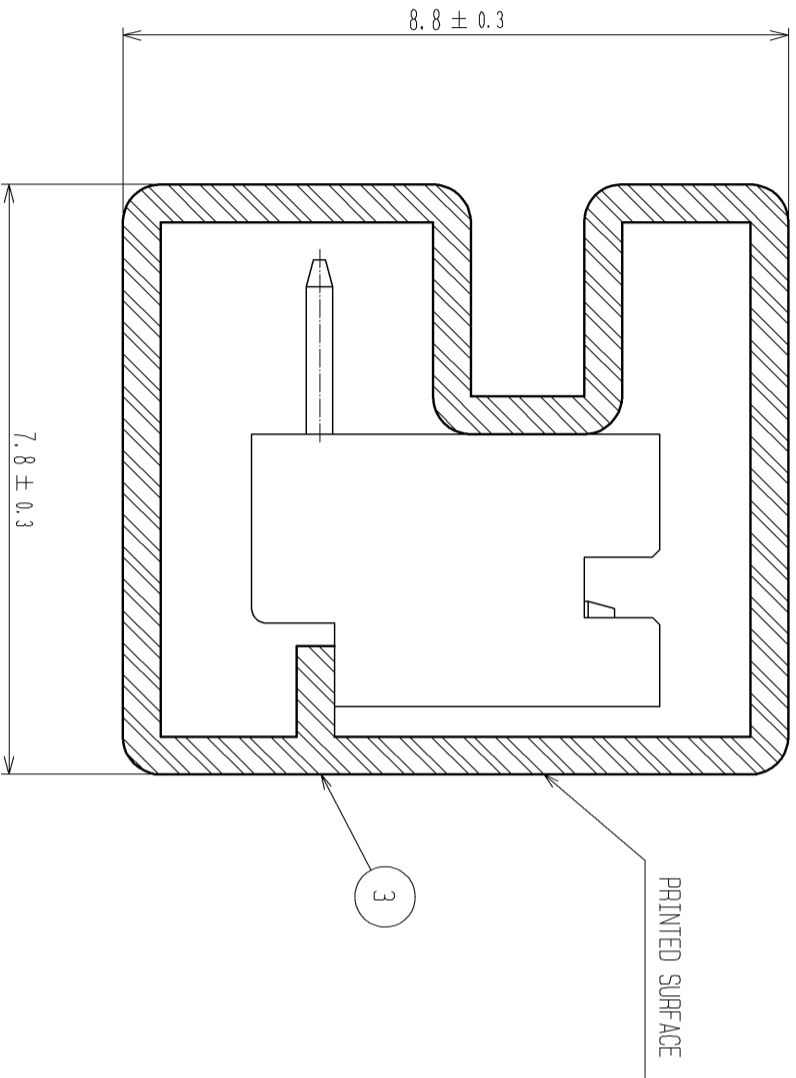
RECOMMENDED PATTERN (BOARD THICKNESS 1mm)



2	BRASS	SURFACE:GOLD PLATED 0.76µm min. UNDER:NICKLE PLATED 0.5µm min.	4	ELASTOMER	STOPPER, GRAY		
1	POLYAMIDE	BEIGE(NATURAL), UL94V-0	3	P S	ELECTROSTATIC PROTECTION, CLEAR		
UNITS		SCALE	COUNT	DESCRIPTION OF REVISIONS	DESIGNED	CHECKED	DATE
mm		5 : 1					
MATERIAL		FINISH	REMARKS	NO.	MATERIAL	FINISH	REMARKS
APPROVED : TS. SAKATA		08.09.01	DRAWING NO.	EDC3-081816-03			
CHECKED : TS. KUMAZAWA		08.08.29	PART NO.	DF13-3P-1.25DS(77)			
DESIGNED : SN. KOBAYASHI		08.08.29	CODE NO.	CL536-0152-0-77			
DRAWN : SN. KOBAYASHI		08.08.29	NO.				



A-A (10:1)



NOTE 2 : NUMBER OF CONNECTORS PER A MAGAZINE CASE SHALL BE 89.
 3 : THESE CONNECTORS SHALL BE ON SALED IN ACCORDANCE WITH THE MULTIPLE QUANTITY OF 89.

HRS DRAWING FOR REFERENCE

HRS	
DRAWING NO.	EDC3-081816-03
PART NO.	DF13-3P-1.25DS(77)
CODE NO.	CL536-0152-0-77
	2/2