



Chipsmall Limited consists of a professional team with an average of over 10 year of expertise in the distribution of electronic components. Based in Hongkong, we have already established firm and mutual-benefit business relationships with customers from,Europe,America and south Asia,supplying obsolete and hard-to-find components to meet their specific needs.

With the principle of “Quality Parts,Customers Priority,Honest Operation,and Considerate Service”,our business mainly focus on the distribution of electronic components. Line cards we deal with include Microchip,ALPS,ROHM,Xilinx,Pulse,ON,Everlight and Freescale. Main products comprise IC,Modules,Potentiometer,IC Socket,Relay,Connector.Our parts cover such applications as commercial,industrial, and automotives areas.

We are looking forward to setting up business relationship with you and hope to provide you with the best service and solution. Let us make a better world for our industry!



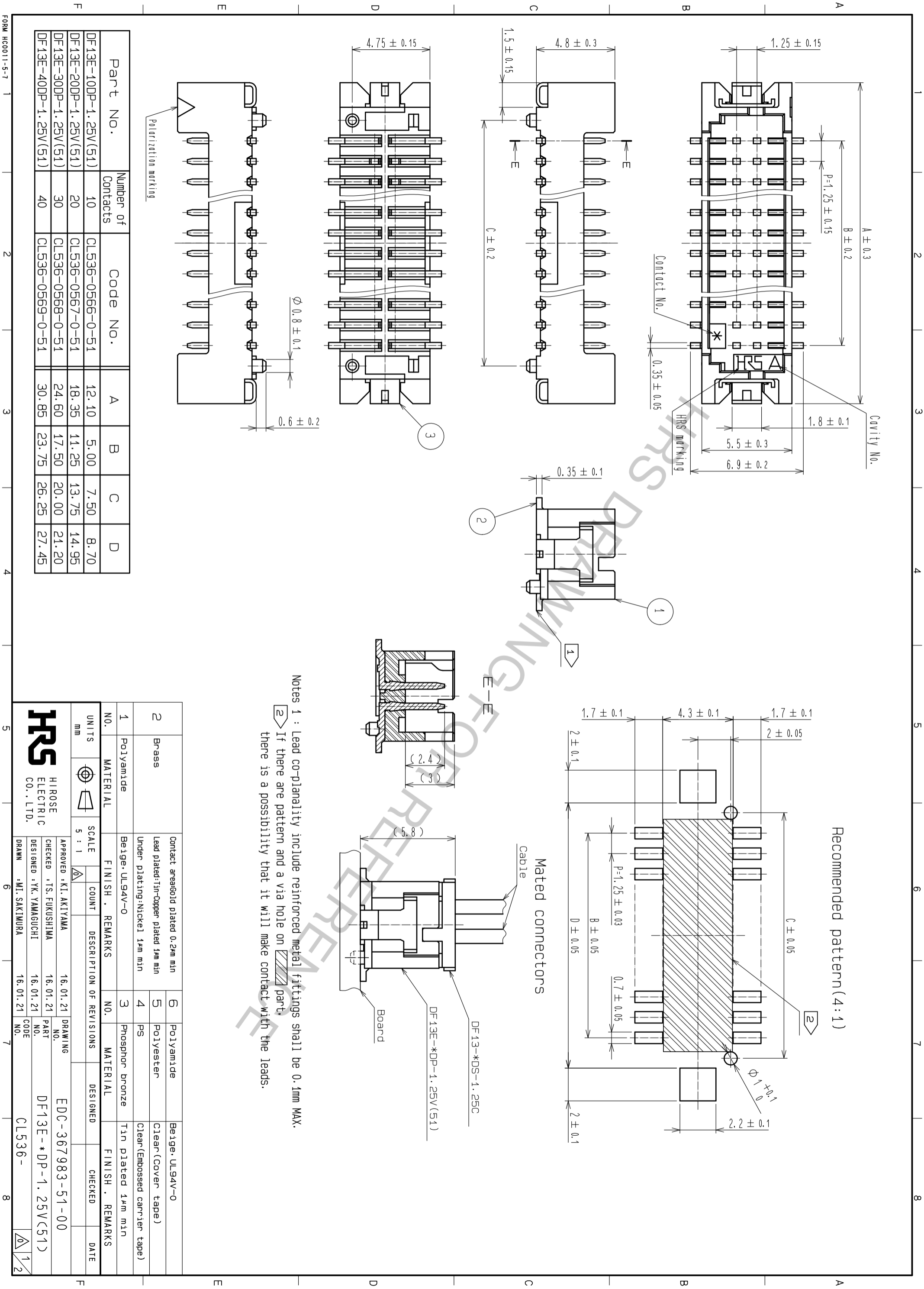
## Contact us

Tel: +86-755-8981 8866 Fax: +86-755-8427 6832

Email & Skype: info@chipsmall.com Web: www.chipsmall.com

Address: A1208, Overseas Decoration Building, #122 Zhenhua RD., Futian, Shenzhen, China





Recommended pattern(4:1)

Notes 1 : Lead co-planarity include reinforced metal fittings shall be 0.1mm MAX.  
 2 If there are pattern and a via hole on part, there is a possibility that it will make contact with the leads.

Part No.	Number of Contacts	Code No.	A	B	C	D
DF13E-10DP-1.25V(51)	10	CL536-0566-0-51	12.10	5.00	7.50	8.70
DF13E-20DP-1.25V(51)	20	CL536-0567-0-51	18.35	11.25	13.75	14.95
DF13E-30DP-1.25V(51)	30	CL536-0568-0-51	24.60	17.50	20.00	21.20
DF13E-40DP-1.25V(51)	40	CL536-0569-0-51	30.85	23.75	26.25	27.45

NO.	MATERIAL	FINISH	REMARKS	NO.	MATERIAL	FINISH	REMARKS
1	Polyamide	Beige, UL94V-0		3	Phosphor bronze	Tin plated 1μm min	
2	Brass	Contact area: Gold plated 0.2μm min Lead plated: Tin-Copper plated 1μm min Under plating: Nickel 1μm min		4	PS	Clear (Embossed carrier tape)	
5	Polyester			6	Polyamide	Beige, UL94V-0	

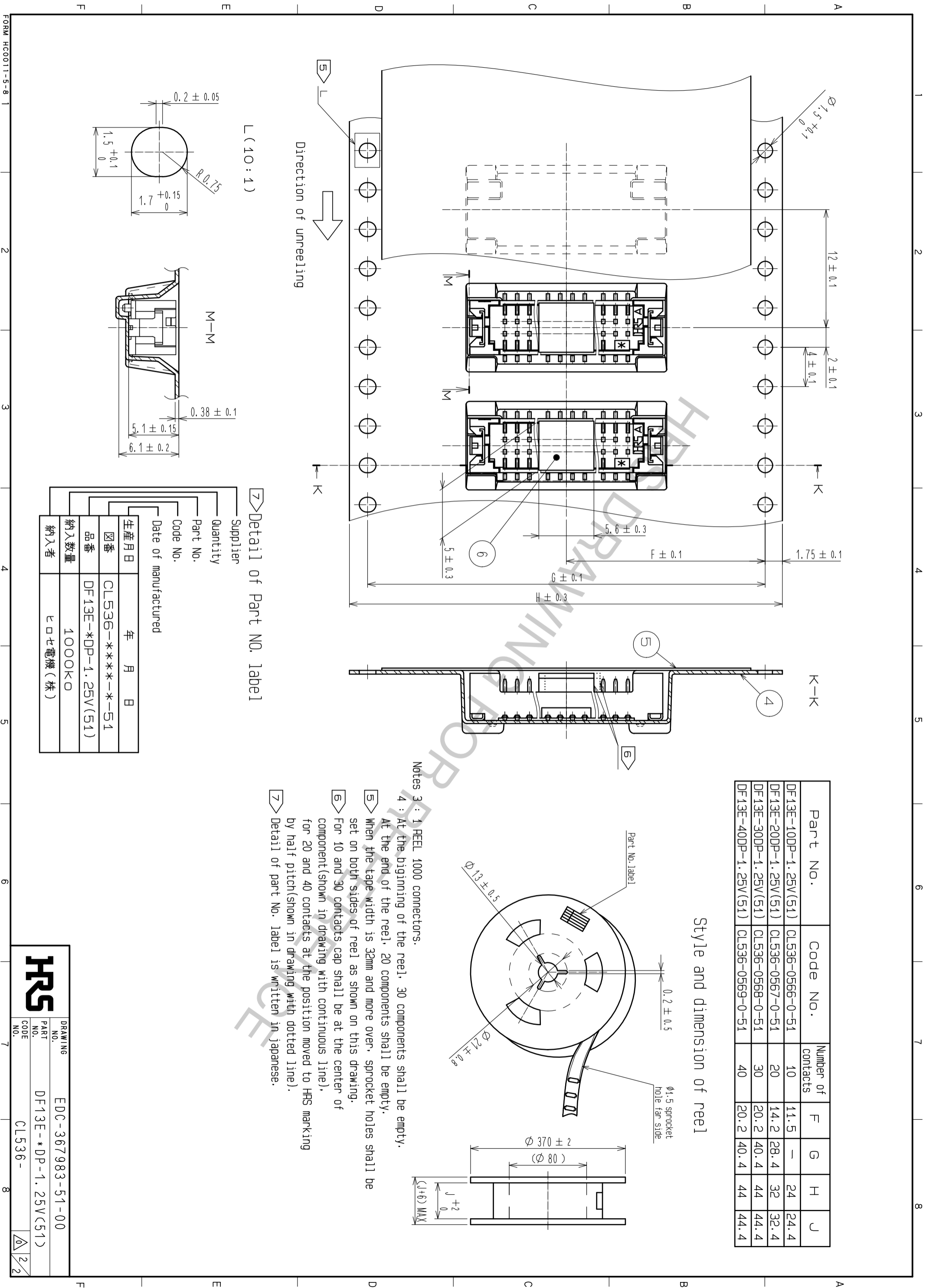
UNITS	SCALE	COUNT	DESCRIPTION OF REVISIONS	DESIGNED	CHECKED	DATE
mm	5 : 1					

APPROVED	CHECKED	DESIGNED	DRAWING	PART NO.	CODE
KI. AKIYAMA	TS. FUKUSHIMA	YK. YAMAGUCHI	EDC-367983-51-00	DF13E-*DP-1.25V(51)	CL536-
16.01.21	16.01.21	16.01.21			



HIROSE ELECTRIC CO., LTD.  
 DRAWN: MI. SAKIYURA  
 DATE: 16.01.21



Part No.	Code No.	Number of contacts	F	G	H	J
DF13E-10DP-1.25V(51)	CL536-0566-0-51	10	11.5	-	24	24.4
DF13E-20DP-1.25V(51)	CL536-0567-0-51	20	14.2	28.4	32	32.4
DF13E-30DP-1.25V(51)	CL536-0568-0-51	30	20.2	40.4	44	44.4
DF13E-40DP-1.25V(51)	CL536-0569-0-51	40	20.2	40.4	44	44.4

Style and dimension of reel

Detail of Part No. label

Supplier	Quantity	Part No.	Code No.	Date of manufactured	生産月日	年月日
					CL536-***-*-51	
					DF13E-*DP-1.25V(51)	
					1000K0	
					ヒロセ電機(株)	

Notes 3 : 1 FEEL 1000 connectors.

- 4 : At the beginning of the reel, 30 components shall be empty. At the end of the reel, 20 components shall be empty.
- 5 : When the tape width is 32mm and more over, sprocket holes shall be set on both sides of reel as shown on this drawing.
- 6 : For 10 and 30 contacts cap shall be at the center of component (shown in drawing with continuous line), for 20 and 40 contacts at the position moved to HRS marking by half pitch (shown in drawing with dotted line).
- 7 : Detail of part No. label is written in Japanese.