



Chipsmall Limited consists of a professional team with an average of over 10 year of expertise in the distribution of electronic components. Based in Hongkong, we have already established firm and mutual-benefit business relationships with customers from,Europe,America and south Asia,supplying obsolete and hard-to-find components to meet their specific needs.

With the principle of “Quality Parts,Customers Priority,Honest Operation,and Considerate Service”,our business mainly focus on the distribution of electronic components. Line cards we deal with include Microchip,ALPS,ROHM,Xilinx,Pulse,ON,Everlight and Freescale. Main products comprise IC,Modules,Potentiometer,IC Socket,Relay,Connector.Our parts cover such applications as commercial,industrial, and automotives areas.

We are looking forward to setting up business relationship with you and hope to provide you with the best service and solution. Let us make a better world for our industry!



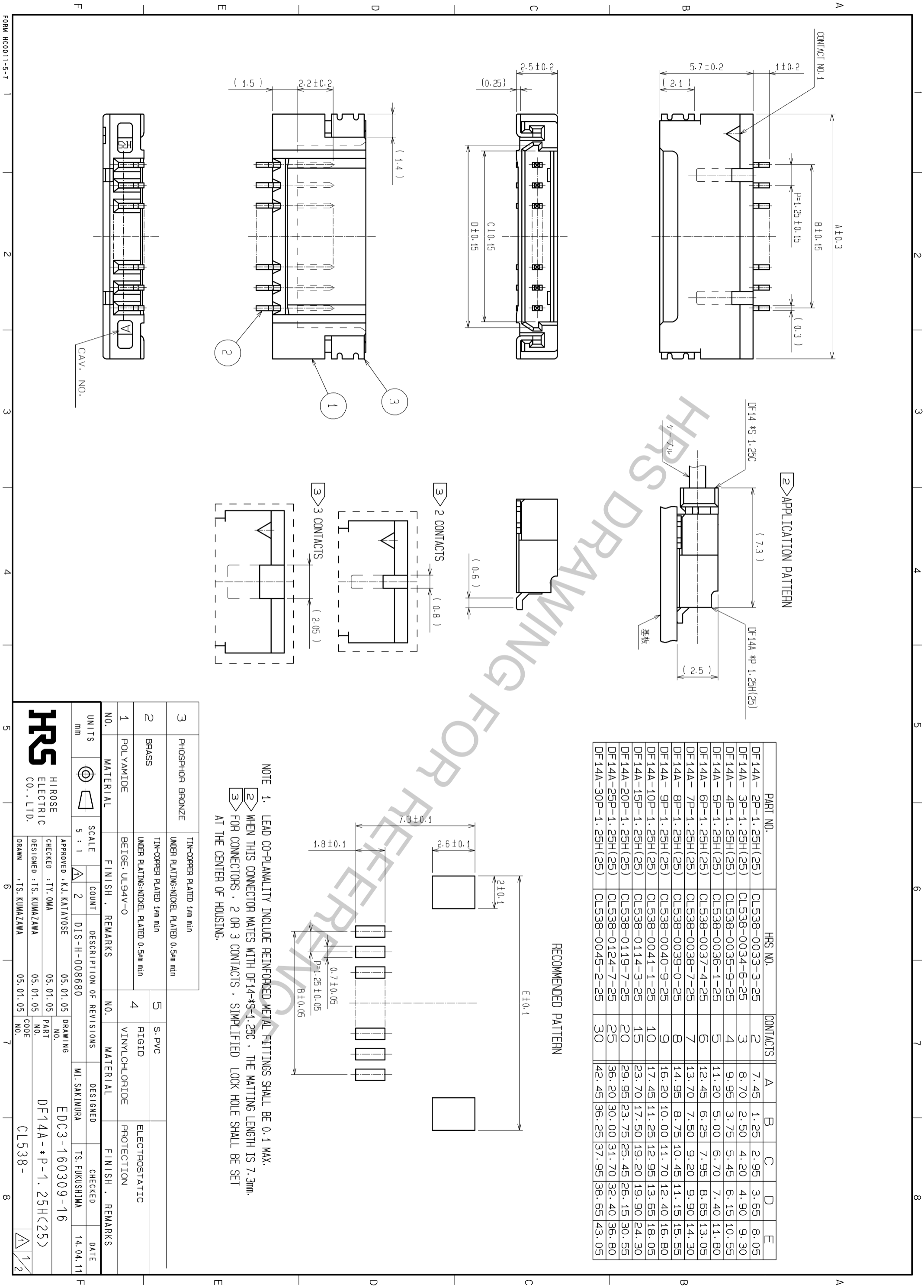
Contact us

Tel: +86-755-8981 8866 Fax: +86-755-8427 6832

Email & Skype: info@chipsmall.com Web: www.chipsmall.com

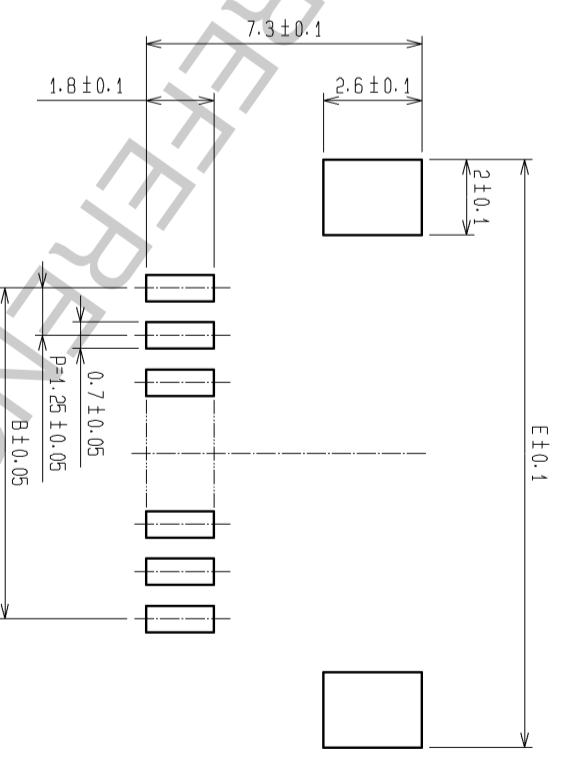
Address: A1208, Overseas Decoration Building, #122 Zhenhua RD., Futian, Shenzhen, China





PART NO.	HRS NO.	CONTACTS	CONTACTS				
			A	B	C	D	E
DF14A-2P-1.25H(25)	CL538-0033-3-25	2	7.45	1.25	2.95	3.65	8.05
DF14A-3P-1.25H(25)	CL538-0034-6-25	3	8.70	2.50	4.20	4.90	9.30
DF14A-4P-1.25H(25)	CL538-0035-9-25	4	9.95	3.75	5.45	6.15	10.55
DF14A-5P-1.25H(25)	CL538-0036-1-25	5	11.20	5.00	6.70	7.40	11.80
DF14A-6P-1.25H(25)	CL538-0037-4-25	6	12.45	6.25	7.95	8.65	13.05
DF14A-7P-1.25H(25)	CL538-0038-7-25	7	13.70	7.50	9.20	9.90	14.30
DF14A-8P-1.25H(25)	CL538-0039-0-25	8	14.95	8.75	10.45	11.15	15.55
DF14A-9P-1.25H(25)	CL538-0040-9-25	9	16.20	10.00	11.70	12.40	16.80
DF14A-10P-1.25H(25)	CL538-0041-1-25	10	17.45	11.25	12.95	13.65	18.05
DF14A-15P-1.25H(25)	CL538-0114-3-25	15	23.70	17.50	19.20	19.90	24.30
DF14A-20P-1.25H(25)	CL538-0119-7-25	20	29.95	23.75	25.45	26.15	30.55
DF14A-25P-1.25H(25)	CL538-0124-7-25	25	36.20	30.00	31.70	32.40	36.80
DF14A-30P-1.25H(25)	CL538-0045-2-25	30	42.45	36.25	37.95	38.65	43.05

RECOMMENDED PATTERN

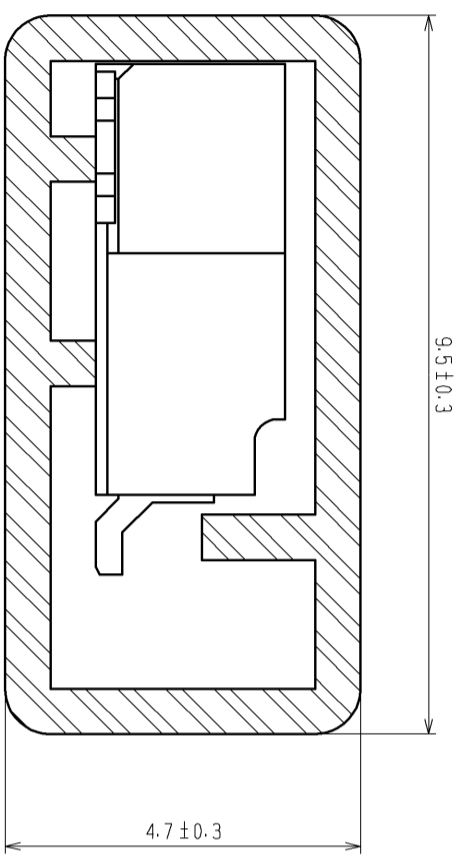


NOTE 1. LEAD CO-PLANALITY INCLUDE REINFORCED METAL FITTINGS SHALL BE 0.1 MAX.
 ② WHEN THIS CONNECTOR MATES WITH DF14-*S-1.25C, THE MATTING LENGTH IS 7.3mm.
 ③ FOR CONNECTORS, 2 OR 3 CONTACTS, SIMPLIFIED LOCK HOLE SHALL BE SET AT THE CENTER OF HOUSING.

NO.	MATERIAL	FINISH	REMARKS	NO.	MATERIAL	FINISH	REMARKS
3	PHOSPHOR BRONZE	TIN-COPPER PLATED 1µm min	UNDER PLATING-NICKEL PLATED 0.5µm min	5	S-PVC		
2	BRASS	TIN-COPPER PLATED 1µm min	UNDER PLATING-NICKEL PLATED 0.5µm min	4	RIGID VINYLCHLORIDE	ELECTROSTATIC PROTECTION	
1	POLYAMIDE	BEIGE-UL94V-0					

UNITS	SCALE	COUNT	DESCRIPTION OF REVISIONS	DESIGNED	CHECKED	DATE
mm	5 : 1	2	DIS-H-008680	MI. SAKIMURA	TS. FUKUSHIMA	14.04.11

APPROVED	CHECKED	DESIGNED	DRAWING	PART NO.	CODE
K.J. KATAYOSE	TY. OMA	TS. KUMAZAWA	EDC3-160309-16	DF14A-*P-1.25H(25)	CL538-



NOTE
 4 THE TUBE HAS ONE STOPPER AT EACH END.
 5 WARPAGE OF THE TUBE SHALL BE ALLOWED ±2mm PER 510mm.
 6 MINIMUM UNIT OF PURCHASE SHALL BE THE QUANTITY OF CONNECTORS IN TUBE.

PART NO.	CONTACTS	QUANTITY OF CONNECTOR
DF14A-2P-1.25H(25)	2	66
DF14A-3P-1.25H(25)	3	56
DF14A-4P-1.25H(25)	4	49
DF14A-5P-1.25H(25)	5	44
DF14A-6P-1.25H(25)	6	39
DF14A-7P-1.25H(25)	7	36
DF14A-8P-1.25H(25)	8	32
DF14A-9P-1.25H(25)	9	30
DF14A-10P-1.25H(25)	10	28
DF14A-15P-1.25H(25)	15	20
DF14A-20P-1.25H(25)	20	16
DF14A-25P-1.25H(25)	25	13
DF14A-30P-1.25H(25)	30	11

HR5

DRAWING NO.	EDC3-160309-16
PART NO.	DF14A-*P-1.25H(25)
CODE	CL538-

FORM HC0011-5-8