



Chipsmall Limited consists of a professional team with an average of over 10 year of expertise in the distribution of electronic components. Based in Hongkong, we have already established firm and mutual-benefit business relationships with customers from,Europe,America and south Asia,supplying obsolete and hard-to-find components to meet their specific needs.

With the principle of “Quality Parts,Customers Priority,Honest Operation,and Considerate Service”,our business mainly focus on the distribution of electronic components. Line cards we deal with include Microchip,ALPS,ROHM,Xilinx,Pulse,ON,Everlight and Freescale. Main products comprise IC,Modules,Potentiometer,IC Socket,Relay,Connector.Our parts cover such applications as commercial,industrial, and automotives areas.

We are looking forward to setting up business relationship with you and hope to provide you with the best service and solution. Let us make a better world for our industry!



Contact us

Tel: +86-755-8981 8866 Fax: +86-755-8427 6832

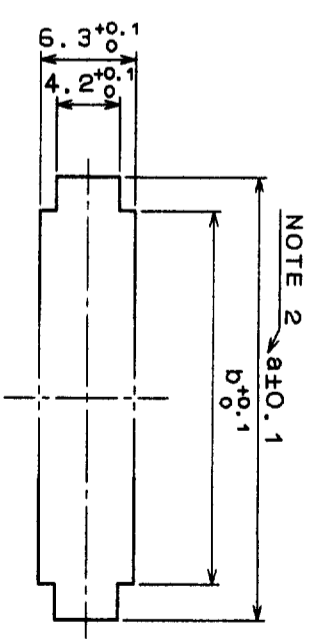
Email & Skype: info@chipsmall.com Web: www.chipsmall.com

Address: A1208, Overseas Decoration Building, #122 Zhenhua RD., Futian, Shenzhen, China

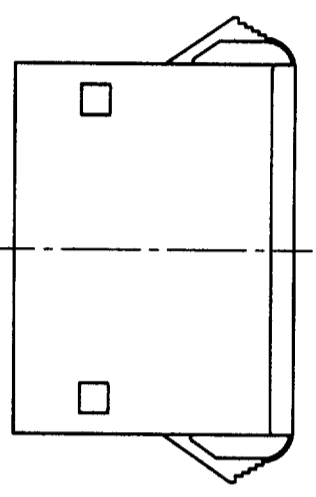
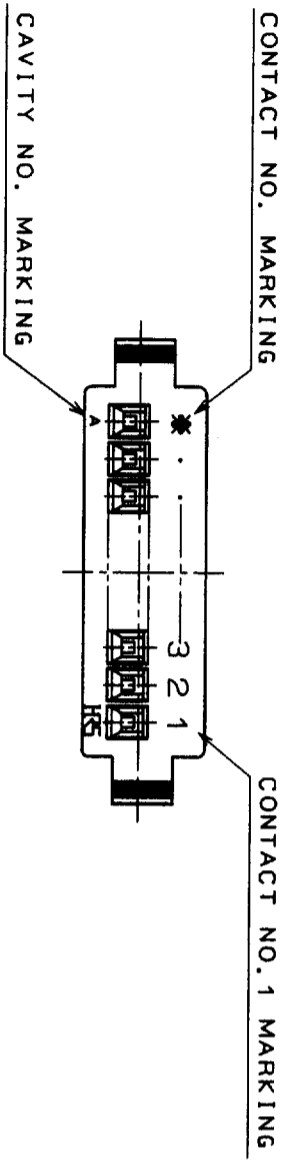
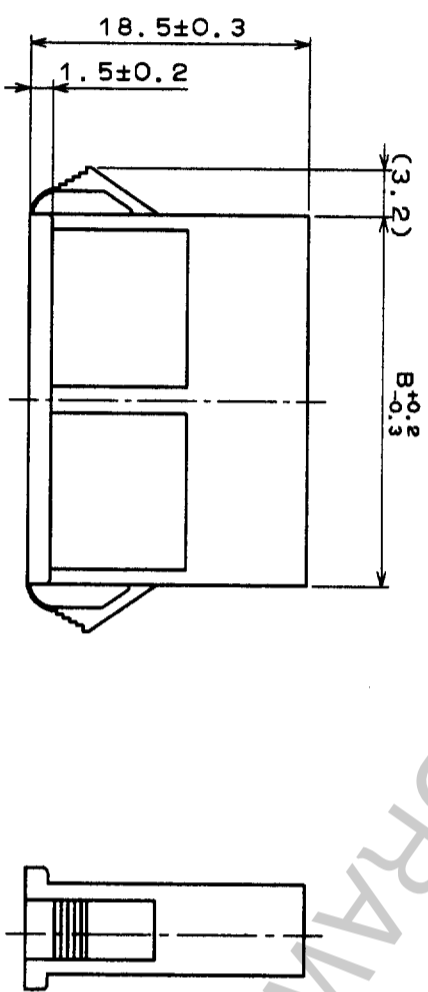
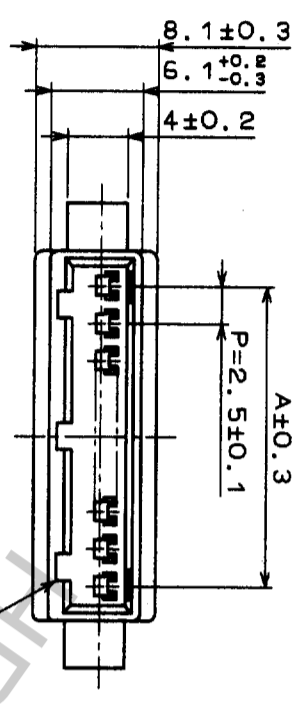


COUNT	DESCRIPTION OF REVISIONS	BY	CHKD	DATE	COUNT	DESCRIPTION OF REVISIONS	BY	CHKD	DATE
1									
2									
3									
4									
5									
6									
7									
8									

< PANEL CUT-OUT >



NOTE 1



CL No.	PART No.	A	B	PANEL CUT-OUT			
				a	a	a	b
CL541-0700-9	DF1BA-2EP-2.5SRC	2.5	7.1	11.2	11.9	12.6	7.3
CL541-0701-1	DF1BA-3EP-2.5SRC	5.0	9.6	13.7	14.4	15.1	9.8
CL541-0702-4	DF1BA-4EP-2.5SRC	7.5	12.1	16.2	16.9	17.6	12.3
CL541-0703-7	DF1BA-5EP-2.5SRC	10.0	14.6	18.7	19.4	20.1	14.8
CL541-0704-0	DF1BA-6EP-2.5SRC	12.5	17.1	21.2	21.9	22.6	17.3
CL541-0705-2	DF1BA-7EP-2.5SRC	15.0	19.6	23.7	24.4	25.1	19.8
CL541-0706-5	DF1BA-8EP-2.5SRC	17.5	22.1	26.2	26.9	27.6	22.3
CL541-0707-8	DF1BA-9EP-2.5SRC	20.0	24.6	28.7	29.4	30.1	24.8
CL541-0708-0	DF1BA-10EP-2.5SRC	22.5	27.1	31.2	31.9	32.6	27.3
CL541-0709-3	DF1BA-11EP-2.5SRC	25.0	29.6	33.7	34.4	35.1	29.8
CL541-0710-2	DF1BA-12EP-2.5SRC	27.5	32.1	36.2	36.9	37.6	32.3
CL541-0711-5	DF1BA-13EP-2.5SRC	30.0	34.6	38.7	39.4	40.1	34.8
CL541-0713-0	DF1BA-15EP-2.5SRC	35.0	39.6	43.7	44.4	45.1	39.8

NOTES 1: CONCAVE PORTION TO PREVENT CONNECTOR MISINSERTION SHALL BE APPLIED ONE AT THE CENTER FOR 2 CONTACTS, TWO AT BOTH ENDS FOR 3 TO 6 CONTACTS AND 3 FOR ANOTHER NUMBER OF CONTACT AS THE FIGURE SHOWN.

2: WHEN YOU MOUNT DF1BA RELAY SOCKET ON A PANEL, PLEASE TAKE NOTE OF DIMENSIONS 'a', INDICATED IN THE TABLE ABOVE. BECAUSE THE CUT-OUT DIMENSION DEPENDS ON PANEL THICKNESS. THE PANEL CUT-OUT SHALL BE FREE FROM BURR.

NO.	MATERIAL	FINISH, REMARKS	1	POLYAMIDE	NATURAL(WHITE) UL94V-0
CODE NO. (OLD)					
DRAWING NO.	EDC3-160595		PART NO.	DF1BA-2EP-2.5SRC	
SCALE	2:1		CODE NO.	CODE NO. SHALL BE IN ACCORDANCE WITH TABLE.	
UNITS	MM				
DRAWN	R. SASAKI	DESIGNED	M. Tanaka	CHECKED	J. Omi
APPROVED		RELEASED			

TO