



Chipsmall Limited consists of a professional team with an average of over 10 year of expertise in the distribution of electronic components. Based in Hongkong, we have already established firm and mutual-benefit business relationships with customers from,Europe,America and south Asia,supplying obsolete and hard-to-find components to meet their specific needs.

With the principle of "Quality Parts,Customers Priority,Honest Operation,and Considerate Service",our business mainly focus on the distribution of electronic components. Line cards we deal with include Microchip,ALPS,ROHM,Xilinx,Pulse,ON,Everlight and Freescale. Main products comprise IC,Modules,Potentiometer,IC Socket,Relay,Connector.Our parts cover such applications as commercial,industrial, and automotives areas.

We are looking forward to setting up business relationship with you and hope to provide you with the best service and solution. Let us make a better world for our industry!



Contact us

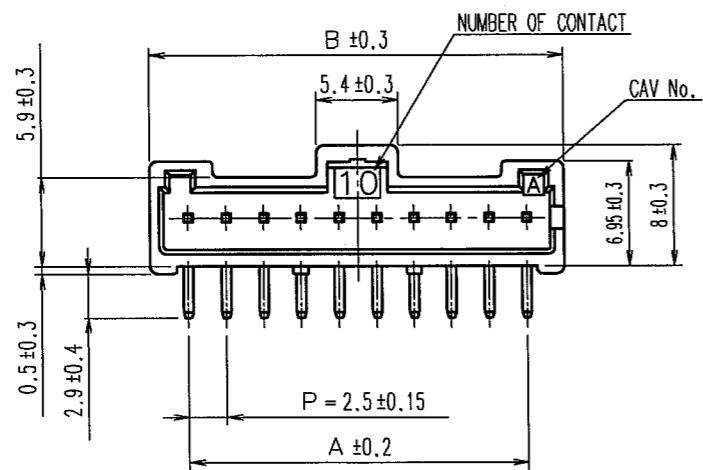
Tel: +86-755-8981 8866 Fax: +86-755-8427 6832

Email & Skype: info@chipsmall.com Web: www.chipsmall.com

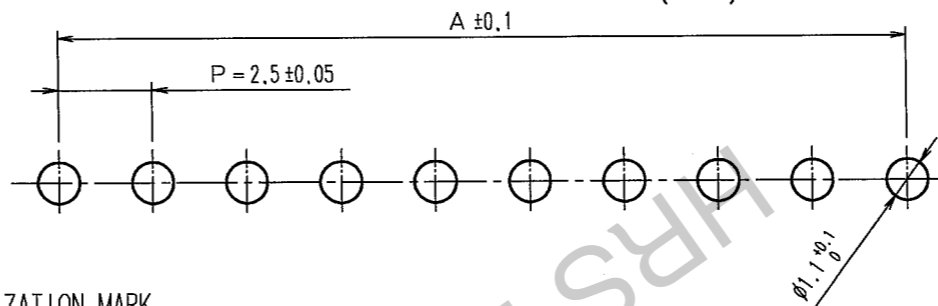
Address: A1208, Overseas Decoration Building, #122 Zhenhua RD., Futian, Shenzhen, China



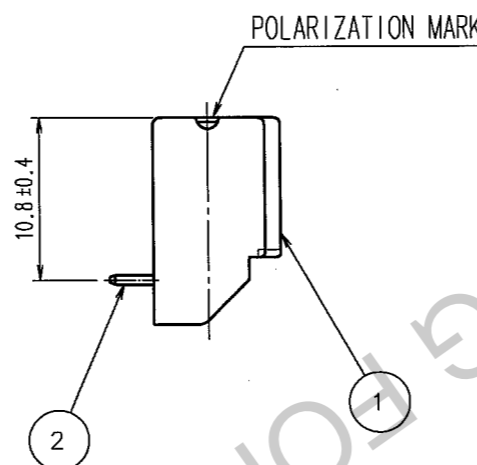
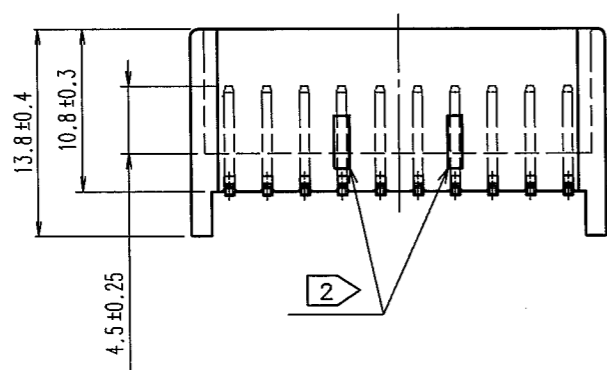
COUNT	DESCRIPTION OF REVISIONS	BY	CHKD	DATE	COUNT	DESCRIPTION OF REVISIONS	BY	CHKD	DATE
△					△				
△					△				
△					△				



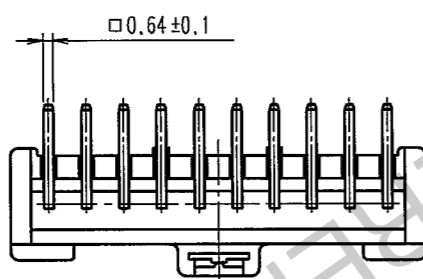
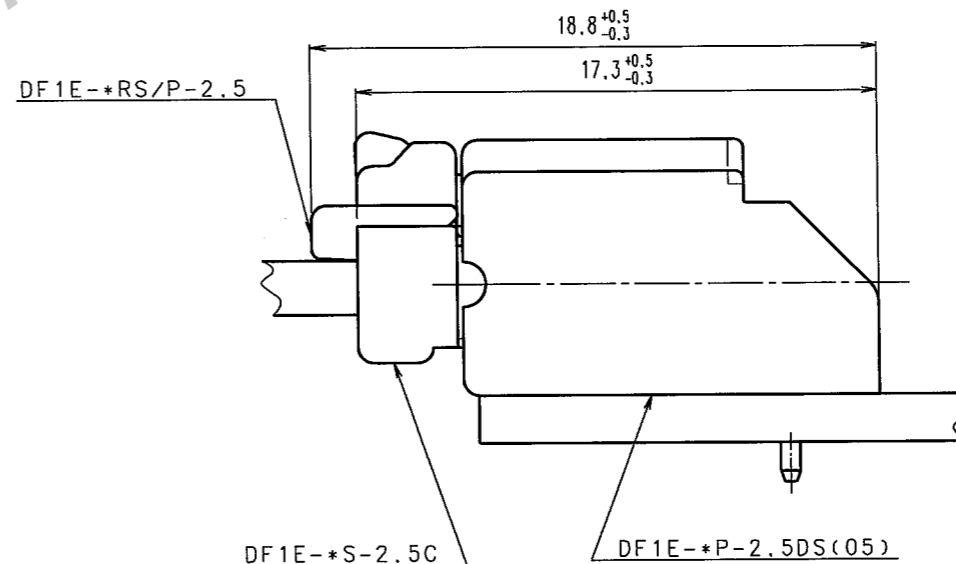
RECOMMENDED PCB LAYOUT(5:1)



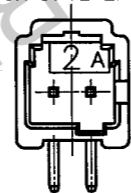
PART No.	CODE No.	NUMBER OF CONTACT	A	B
DF1E- 2P-2.5DS(05)	CL541-0985-0-05	2	2.5	7.5
DF1E- 3P-2.5DS(05)	CL541-0986-3-05	3	5.0	10.0
DF1E- 4P-2.5DS(05)	CL541-0987-6-05	4	7.5	12.5
DF1E- 5P-2.5DS(05)	CL541-0988-9-05	5	10.0	15.0
DF1E- 6P-2.5DS(05)	CL541-0989-1-05	6	12.5	17.5
DF1E- 7P-2.5DS(05)	CL541-0990-0-05	7	15.0	20.0
DF1E- 8P-2.5DS(05)	CL541-0991-3-05	8	17.5	22.5
DF1E- 9P-2.5DS(05)	CL541-0992-6-05	9	20.0	25.0
DF1E-10P-2.5DS(05)	CL541-0993-9-05	10	22.5	27.5
DF1E-11P-2.5DS(05)	CL541-0994-1-05	11	25.0	30.0
DF1E-12P-2.5DS(05)	CL541-0995-4-05	12	27.5	32.5
DF1E-13P-2.5DS(05)	CL541-0996-7-05	13	30.0	35.0
DF1E-14P-2.5DS(05)	CL541-0997-0-05	14	32.5	37.5
DF1E-15P-2.5DS(05)	CL541-0998-2-05	15	35.0	40.0



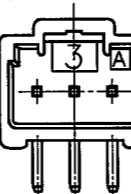
APPLICATION DIAGRAM(4:1)



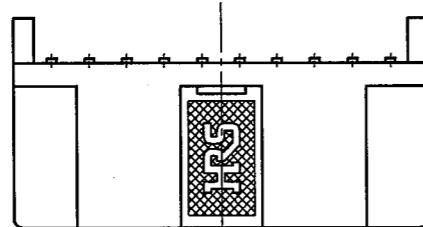
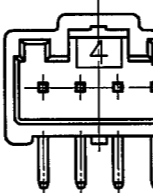
1 FOR DF1E-2P-2.5DS(05)



1 FOR DF1E-3P-2.5DS(05)



1 FOR DF1E-4P-2.5DS(05)



NOTES 1: CONFIGURATION OF DF1E-2P-2.5DS(05), DF1E-3P-2.5DS(05) AND DF1E-4P-2.5DS(05).
 2: 2 AND 3 OF CONTACTS MAKE DRAWING FORM (PROJECTION) UNNECESSARY, AND 4 OF CONTACTS CONSIDERED AS ONE PROJECTION IN THE CENTER.
 3: UL(FILE No.E52653)
 C-UL(FILE No.E52653)

1	POLYAMIDE	NATURAL (BEIGE), UL94V-0	2	BRASS	SURFACE: TIN PLATED 1μm min UNDER PLATING: NICKEL PLATED 0.5μm min
NO.	MATERIAL	FINISH, REMARKS	NO.	MATERIAL	FINISH, REMARKS
CODE NO. (OLD) CL		DRAWN F.Matsuki '04.04.14	DESIGNED H.Umehara '04.04.14	CHECKED T. Ono 04.04.15	APPROVED T. Ono 04.04.15
DRAWING NO. EDC3-161951-01		PART NO. DF1E-*P-2.5DS(05)		CODE NO. CL541	
SCALE 2:1		UNITS mm		HRS HIROSE ELECTRIC CO., LTD	

TO