



Chipsmall Limited consists of a professional team with an average of over 10 year of expertise in the distribution of electronic components. Based in Hongkong, we have already established firm and mutual-benefit business relationships with customers from,Europe,America and south Asia,supplying obsolete and hard-to-find components to meet their specific needs.

With the principle of "Quality Parts,Customers Priority,Honest Operation,and Considerate Service",our business mainly focus on the distribution of electronic components. Line cards we deal with include Microchip,ALPS,ROHM,Xilinx,Pulse,ON,Everlight and Freescale. Main products comprise IC,Modules,Potentiometer,IC Socket,Relay,Connector.Our parts cover such applications as commercial,industrial, and automotives areas.

We are looking forward to setting up business relationship with you and hope to provide you with the best service and solution. Let us make a better world for our industry!



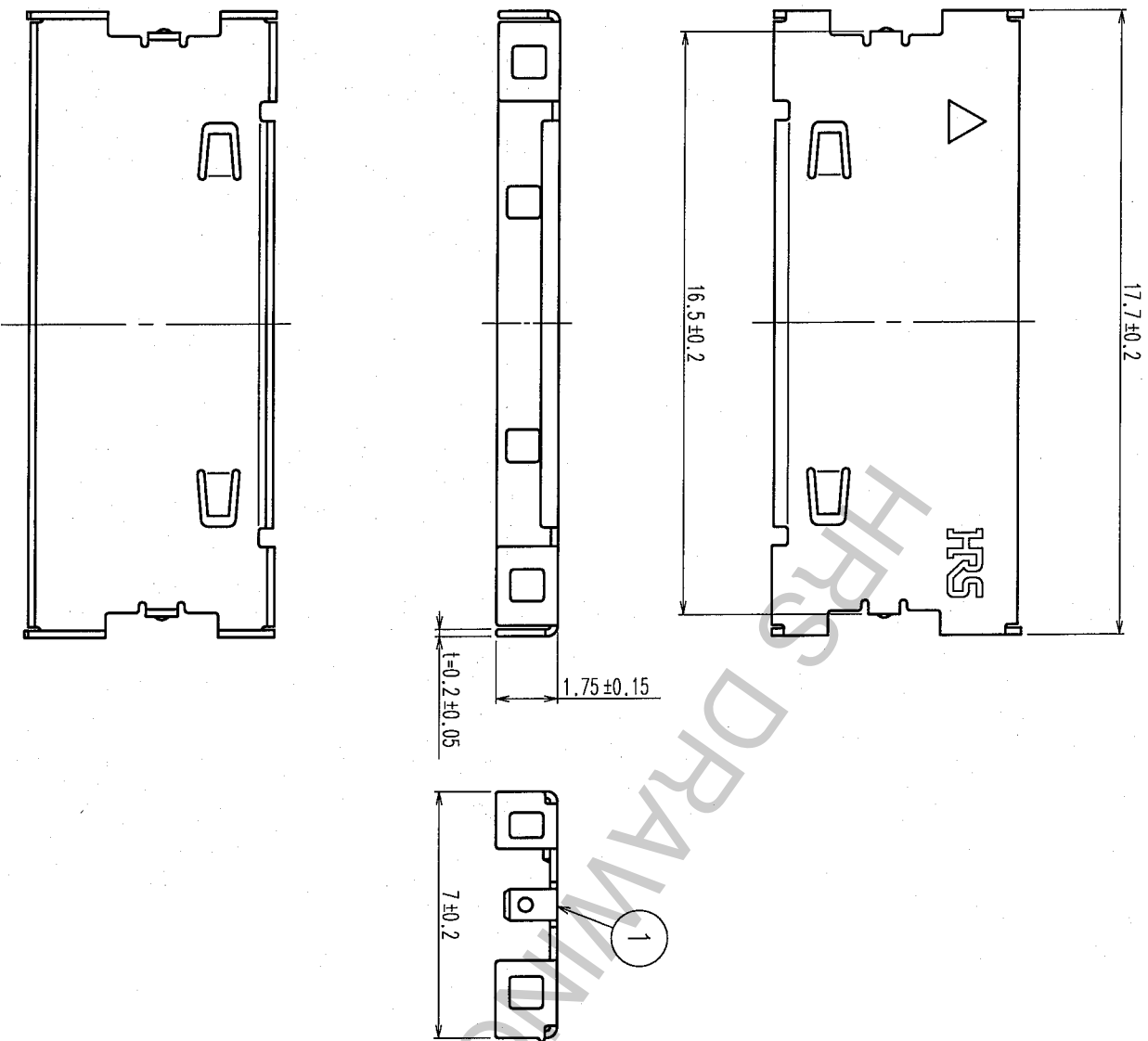
Contact us

Tel: +86-755-8981 8866 Fax: +86-755-8427 6832

Email & Skype: info@chipsmall.com Web: www.chipsmall.com

Address: A1208, Overseas Decoration Building, #122 Zhenhua RD., Futian, Shenzhen, China

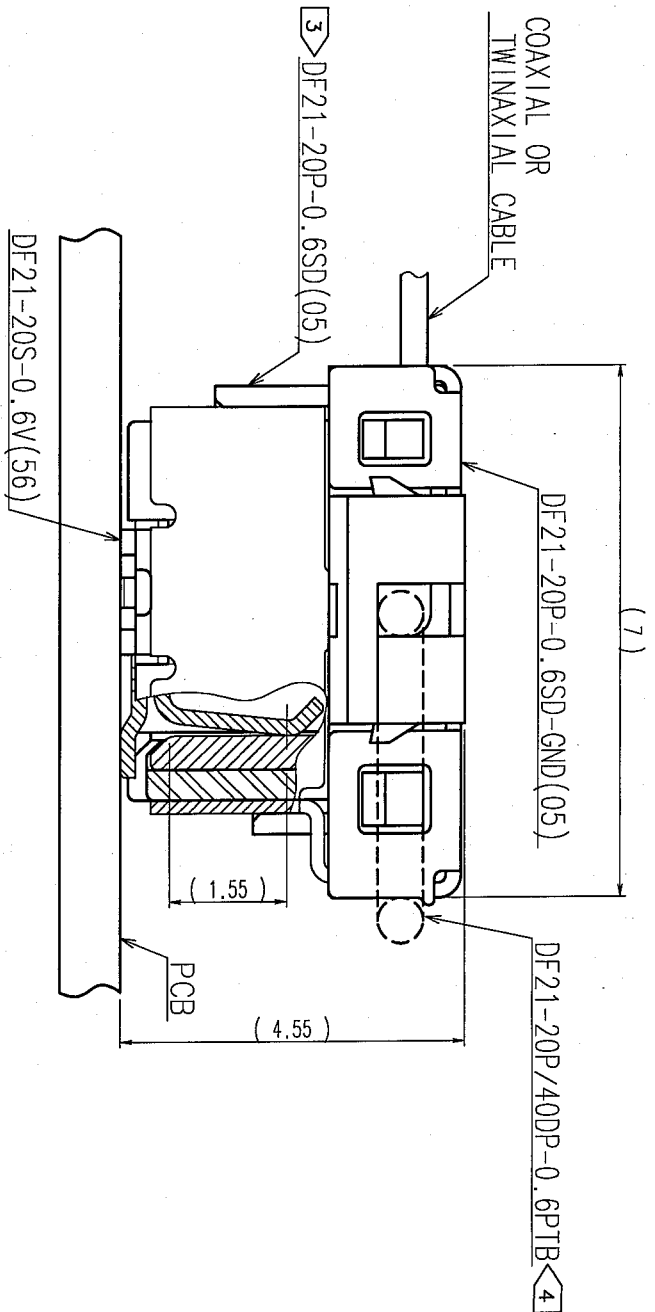




- NOTES 1: MINIMUM ORDERING QUANTITY IS ONE PACKAGE. (CONTAINING 100 PCS)
 2: TWINAXIAL CABLE CAN NOT BE USED BETWEEN 4 TO 5 POS, 8 TO 9 POS,
 12 TO 13 POS, 16 TO 17 POS, WHERE MAIN PLUG HAS BOSS.
 3: MAIN PLUG(DF21-20P-0.6SD) SOLD SEPARATELY.
 INSTALL THIS SHELL AFTER CABLE ASSEMBLY.
 4: PULL-TAB(DF21-20P/40DP-0.6PTB) OPTIONAL. SOLD SEPARATELY.

COUNT	DESCRIPTION OF REVISIONS	BY	CHKD	DATE	COUNT	DESCRIPTION OF REVISIONS	BY	CHKD	DATE
△					△				
△					△				
△					△				

APPLICATION DIAGRAM(10:1)



NO.	MATERIAL	FINISH, REMARKS	NO.	MATERIAL	FINISH, REMARKS
1	STAINLESS STEEL	Surface: Tin-Copper Plated 1μm min. Under Plating: Nickel Plated 0.1μm min.	1	STAINLESS STEEL	Surface: Tin-Copper Plated 1μm min. Under Plating: Nickel Plated 0.1μm min.

NO. (OLD)	CL	DRAWN	DESIGNED	CHECKED	APPROVED	RELEASED
		S. Owa	S. Owa	H. Yamashita	T. Owa	
		06.02.03	06.02.03	06.02.04	06.02.06	

SCALE	DRAWING NO.	PART NO.
5 : 1	EDC3-163694-01	DF21-20P-0.6SD-GND(05)
UNITS	MM	CODE NO.
		CL687-2500-6-05

HRS HIROSE ELECTRIC CO., LTD

1/1