



Chipsmall Limited consists of a professional team with an average of over 10 year of expertise in the distribution of electronic components. Based in Hongkong, we have already established firm and mutual-benefit business relationships with customers from,Europe,America and south Asia,supplying obsolete and hard-to-find components to meet their specific needs.

With the principle of “Quality Parts,Customers Priority,Honest Operation,and Considerate Service”,our business mainly focus on the distribution of electronic components. Line cards we deal with include Microchip,ALPS,ROHM,Xilinx,Pulse,ON,Everlight and Freescale. Main products comprise IC,Modules,Potentiometer,IC Socket,Relay,Connector.Our parts cover such applications as commercial,industrial, and automotives areas.

We are looking forward to setting up business relationship with you and hope to provide you with the best service and solution. Let us make a better world for our industry!



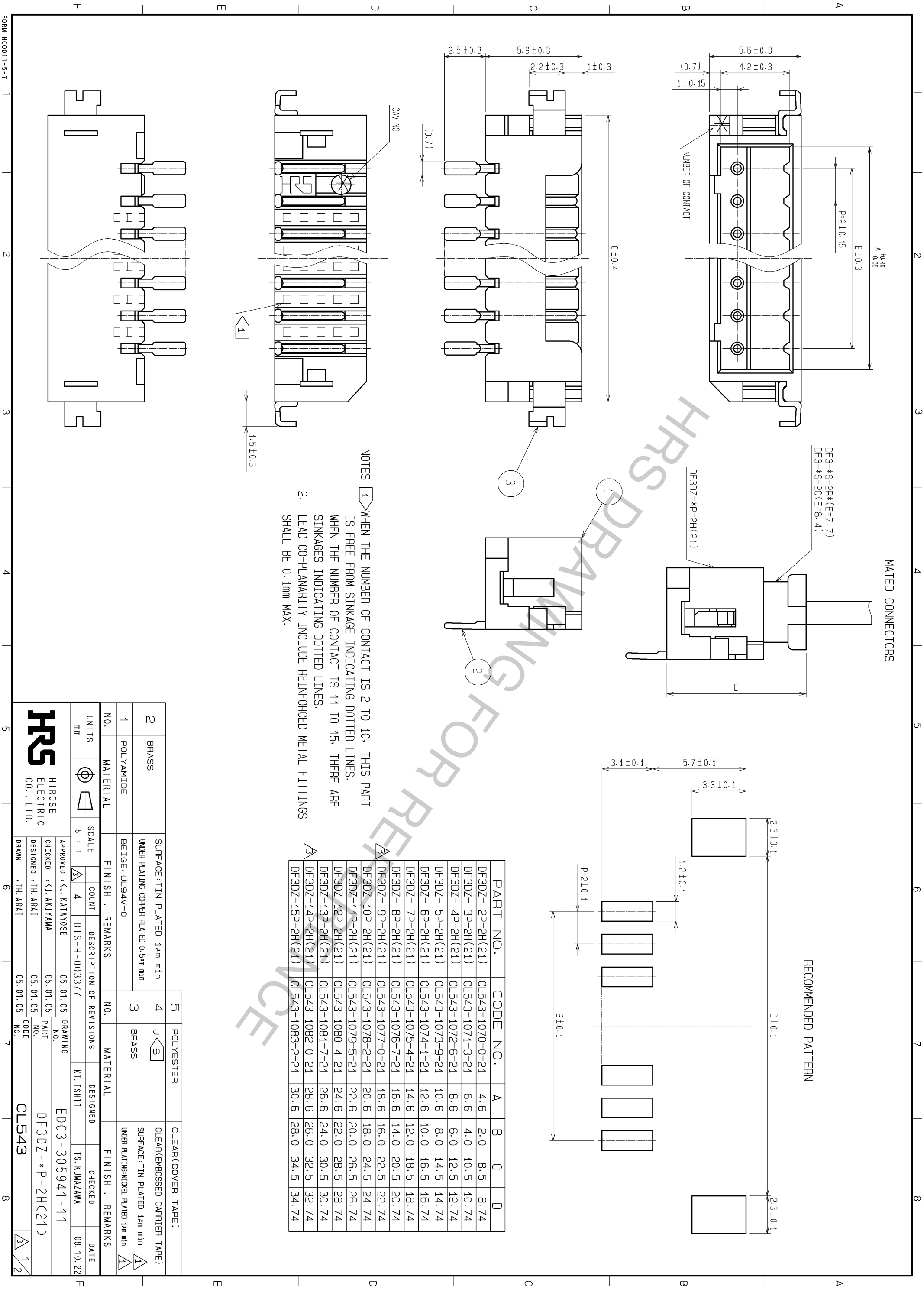
Contact us

Tel: +86-755-8981 8866 Fax: +86-755-8427 6832

Email & Skype: info@chipsmall.com Web: www.chipsmall.com

Address: A1208, Overseas Decoration Building, #122 Zhenhua RD., Futian, Shenzhen, China





MATED CONNECTORS

DF3-*S-2R*(E=7.7)
DF3-*S-2C*(E=8.4)

DF30Z-*P-2H(21)

RECOMMENDED PATTERN

- NOTES
- 1 WHEN THE NUMBER OF CONTACT IS 2 TO 10, THIS PART IS FREE FROM SINKAGE INDICATING DOTTED LINES. WHEN THE NUMBER OF CONTACT IS 11 TO 15, THERE ARE SINKAGES INDICATING DOTTED LINES.
 - 2 LEAD CO-PLANARITY INCLUDE REINFORCED METAL FITTINGS SHALL BE 0.1mm MAX.

PART NO.	CODE NO.	A	B	C	D
DF30Z-2P-2H(21)	CL543-1070-0-21	4.6	2.0	8.5	8.74
DF30Z-3P-2H(21)	CL543-1071-3-21	6.6	4.0	10.5	10.74
DF30Z-4P-2H(21)	CL543-1072-6-21	8.6	6.0	12.5	12.74
DF30Z-5P-2H(21)	CL543-1073-9-21	10.6	8.0	14.5	14.74
DF30Z-6P-2H(21)	CL543-1074-1-21	12.6	10.0	16.5	16.74
DF30Z-7P-2H(21)	CL543-1075-4-21	14.6	12.0	18.5	18.74
DF30Z-8P-2H(21)	CL543-1076-7-21	16.6	14.0	20.5	20.74
DF30Z-9P-2H(21)	CL543-1077-0-21	18.6	16.0	22.5	22.74
DF30Z-10P-2H(21)	CL543-1078-2-21	20.6	18.0	24.5	24.74
DF30Z-11P-2H(21)	CL543-1079-5-21	22.6	20.0	26.5	26.74
DF30Z-12P-2H(21)	CL543-1080-4-21	24.6	22.0	28.5	28.74
DF30Z-13P-2H(21)	CL543-1081-7-21	26.6	24.0	30.5	30.74
DF30Z-14P-2H(21)	CL543-1082-0-21	28.6	26.0	32.5	32.74
DF30Z-15P-2H(21)	CL543-1083-2-21	30.6	28.0	34.5	34.74

NO.	UNITS	MATERIAL	FINISH	REMARKS	NO.	MATERIAL	FINISH	REMARKS
2	BRASS	SURFACE: TIN PLATED 1µm min UNDER PLATING: COPPER PLATED 0.5µm min			4	POLYESTER	6	CLEAR(COVER TAPE) CLEAR(EMBOSSED CARRIER TAPE)
1	POLYAMIDE	BEIGE: UL94V-0			3	BRASS		SURFACE: TIN PLATED 1µm min UNDER PLATING: NICKEL PLATED 1µm min

SCALE	COUNT	DESCRIPTION OF REVISIONS	DESIGNED	CHECKED	DATE
5 : 1	4	DIS-H-003377	KI. ISHII	TS. KUMAZAWA	08.10.22

APPROVED	CHECKED	DESIGNED	DRAWING NO.	PART NO.	CODE
KI. KATAYOSE	KI. AKIYAMA	TH. ARAI	EDC3-305941-11	DF30Z-*P-2H(21)	CL543

