



Chipsmall Limited consists of a professional team with an average of over 10 year of expertise in the distribution of electronic components. Based in Hongkong, we have already established firm and mutual-benefit business relationships with customers from,Europe,America and south Asia,supplying obsolete and hard-to-find components to meet their specific needs.

With the principle of “Quality Parts,Customers Priority,Honest Operation,and Considerate Service”,our business mainly focus on the distribution of electronic components. Line cards we deal with include Microchip,ALPS,ROHM,Xilinx,Pulse,ON,Everlight and Freescale. Main products comprise IC,Modules,Potentiometer,IC Socket,Relay,Connector.Our parts cover such applications as commercial,industrial, and automotives areas.

We are looking forward to setting up business relationship with you and hope to provide you with the best service and solution. Let us make a better world for our industry!



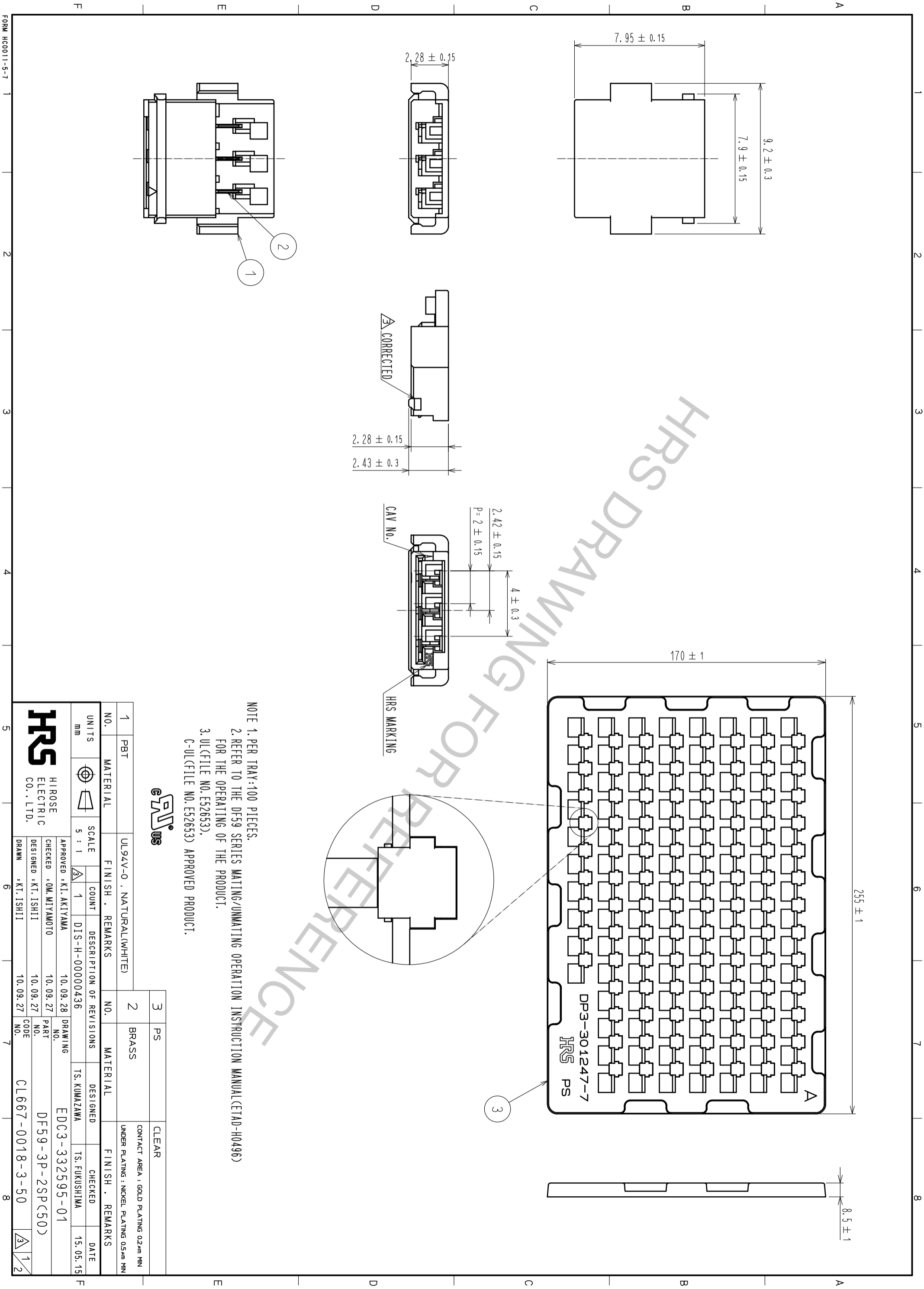
Contact us

Tel: +86-755-8981 8866 Fax: +86-755-8427 6832

Email & Skype: info@chipsmall.com Web: www.chipsmall.com

Address: A1208, Overseas Decoration Building, #122 Zhenhua RD., Futian, Shenzhen, China





NOTE 1. PER TRAY:100 PIECES.
 2. REFER TO THE DF59 SERIES MATING/UNMATING OPERATION INSTRUCTION MANUAL(ETAD-H0496)
 FOR THE OPERATING OF THE PRODUCT.
 3. UL(FILE NO. E52653),
 C-UL(FILE NO. E52653) APPROVED PRODUCT.



1	PBT	UL94V-0, NATURAL(WHITE)	3	PS	CLEAR
2	BRASS	CONTACT AREA : GOLD PLATING 0.2μm MIN UNDER PLATING : NICKEL PLATING 0.5μm MIN			

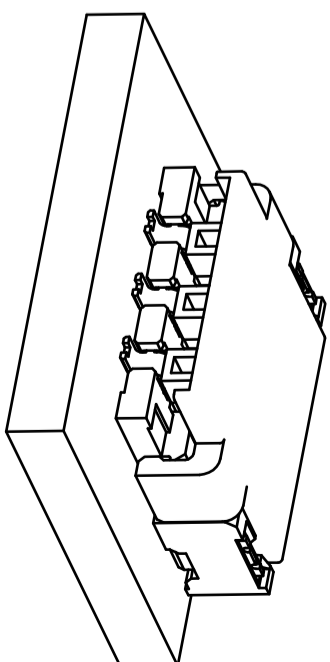
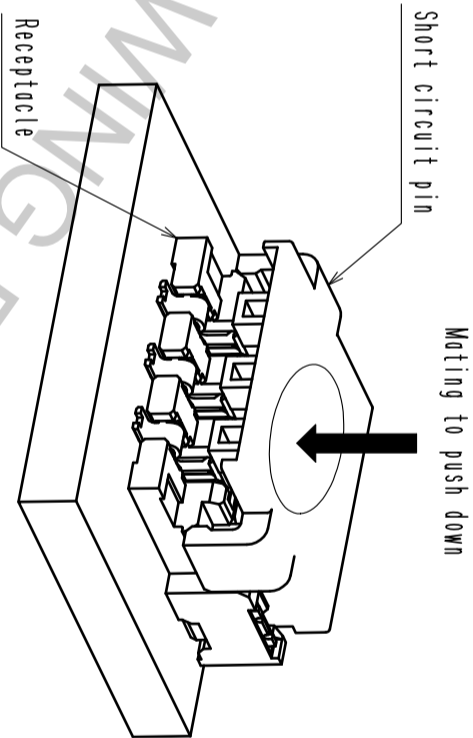
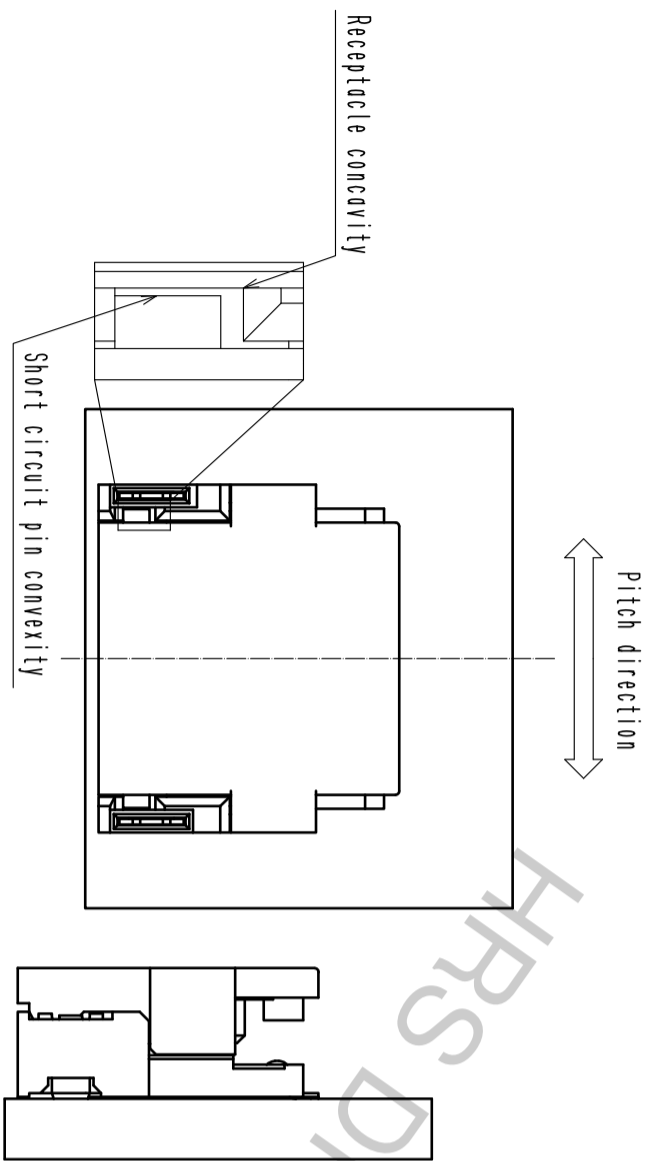
NO.	UNITS	MATERIAL	FINISH	REMARKS	NO.	MATERIAL	FINISH	REMARKS
1	mm	UL94V-0, NATURAL(WHITE)			3	PS	CLEAR	
SCALE		5 : 1			COUNT			
DESCRIPTION OF REVISIONS		DIS-H-00000436		DESIGNED		CHECKED		DATE
APPROVED : KI. AKIYAMA		10.09.28		DESIGNED		CHECKED		DATE
CHECKED : OM. MIYAMOTO		10.09.27		DESIGNED		CHECKED		DATE
DESIGNED : KI. ISHII		10.09.27		DESIGNED		CHECKED		DATE
DRAWN : KI. ISHII		10.09.27		DESIGNED		CHECKED		DATE
DRAWING NO.		EDC3-332595-01		DESIGNED		CHECKED		DATE
PART NO.		DF59-3P-2SP(50)		DESIGNED		CHECKED		DATE
CODE		CL667-0018-3-50		DESIGNED		CHECKED		DATE

Operation Procedures for Crimp Socket

【 Mating 】

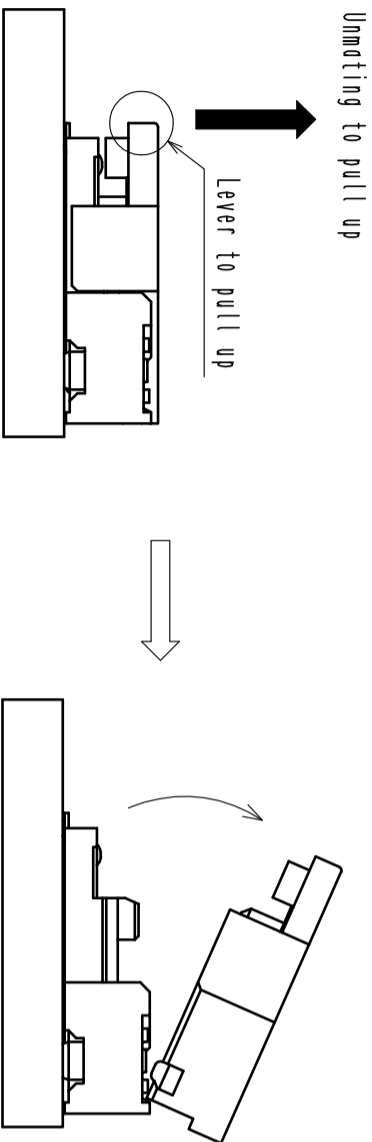
1. By positioning the convexity of the short circuit pin sides to the receptacle concavity, align the centers of the short circuit pin and the receptacle in pitch direction.

2. Press down at the center surface of short circuit pin.
 Note) Press down until the short circuit pin touches to the receptacle.



【 Umating 】

1. Hook the lever with finger and lift up to the upper direction for unlock.



HRS DRAWING FOR REFERENCE

FORM HC0011-5-4-AN 1 2 3 4 5 6 7 8

HRS	図番：	EDC3-332595-01
	製品名：	DF59-3P-2SP(50)
	製品	CL667-0018-3-50