



Chipsmall Limited consists of a professional team with an average of over 10 year of expertise in the distribution of electronic components. Based in Hongkong, we have already established firm and mutual-benefit business relationships with customers from,Europe,America and south Asia,supplying obsolete and hard-to-find components to meet their specific needs.

With the principle of “Quality Parts,Customers Priority,Honest Operation,and Considerate Service”,our business mainly focus on the distribution of electronic components. Line cards we deal with include Microchip,ALPS,ROHM,Xilinx,Pulse,ON,Everlight and Freescale. Main products comprise IC,Modules,Potentiometer,IC Socket,Relay,Connector.Our parts cover such applications as commercial,industrial, and automotives areas.

We are looking forward to setting up business relationship with you and hope to provide you with the best service and solution. Let us make a better world for our industry!



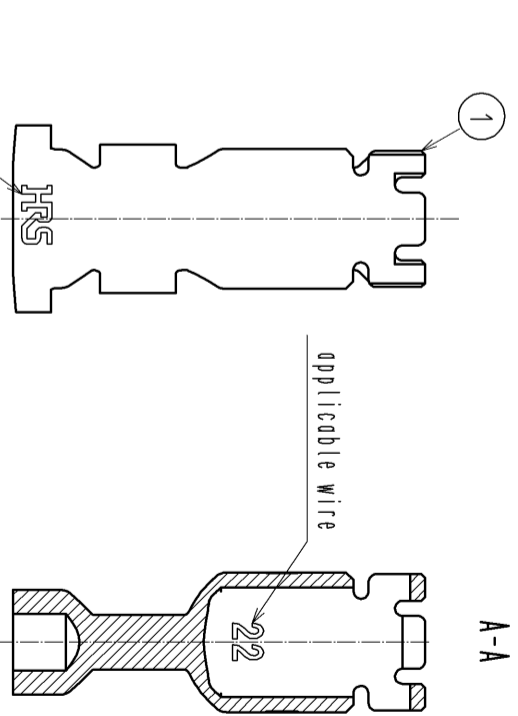
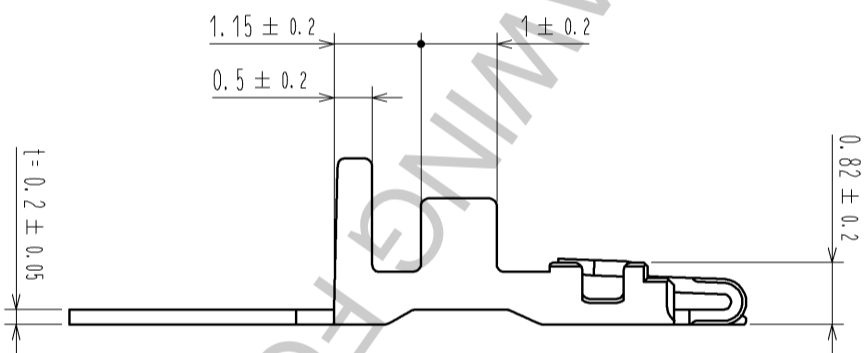
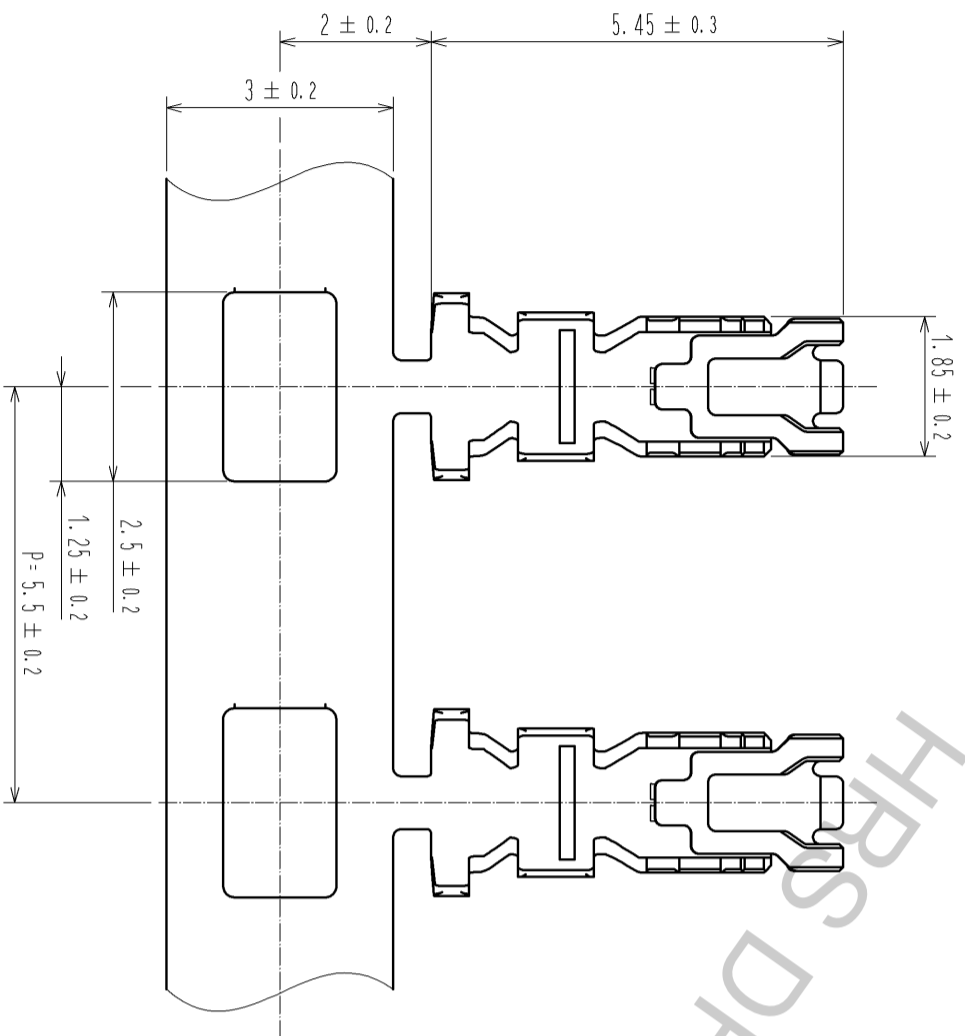
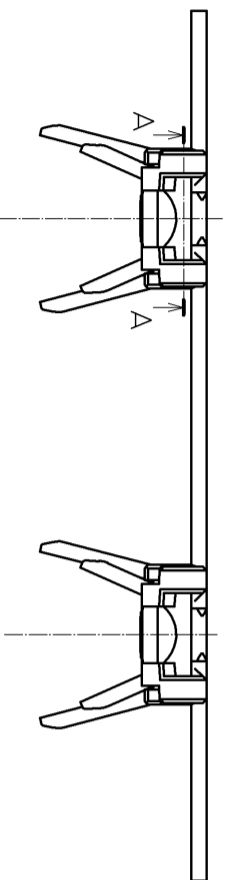
## Contact us

Tel: +86-755-8981 8866 Fax: +86-755-8427 6832

Email & Skype: info@chipsmall.com Web: www.chipsmall.com

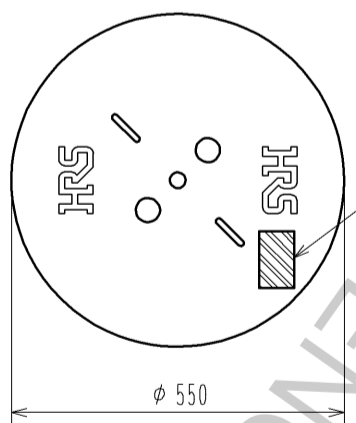
Address: A1208, Overseas Decoration Building, #122 Zhenhua RD., Futian, Shenzhen, China





- Notes
1. 1RL : 15000 contacts.
  - 2 Style of reel and box are shown in figure.
  3. Please be sure to check the form of crimping using a cable when you adjust applicator.
  4. Always refer to the manuals below for operation of this product.  
For Cable assembly / Cable assembly procedure ETAD-H0778  
For Mating/Unmating / Operation manual ETAD-H0779

2 Reel style and dimensions



Detail of Part No. Label

品名コード		Q1567-0042-8	検査
品名		DF59M-2224PCF	
数量		15000	Lot No.
仕様			
Lot No.			Section
Specification			
Quantity			Part No.
Code No.			

1	Copper Alloy	Surface: Tin plating 1.4μm MIN
---	--------------	--------------------------------

NO.	UNITS	MATERIAL	FINISH . REMARKS	NO.	MATERIAL	FINISH . REMARKS
1	mm			1	Copper Alloy	Surface: Tin plating 1.4μm MIN
SCALE		10 : 1		DESIGNED		EDC3-356515-01
COUNT				CHECKED		DF59M-2224PCF
DESCRIPTION OF REVISIONS				DATE		14.05.19
APPROVED : HK. UMEHARA				DRAWING NO.		CL667-0042-8-00
CHECKED : HK. UMEHARA				PART NO.		
DESIGNED : SZ. ONO				CODE NO.		
DRAWN : SZ. ONO				NO.		