



Chipsmall Limited consists of a professional team with an average of over 10 year of expertise in the distribution of electronic components. Based in Hongkong, we have already established firm and mutual-benefit business relationships with customers from,Europe,America and south Asia,supplying obsolete and hard-to-find components to meet their specific needs.

With the principle of “Quality Parts,Customers Priority,Honest Operation,and Considerate Service”,our business mainly focus on the distribution of electronic components. Line cards we deal with include Microchip,ALPS,ROHM,Xilinx,Pulse,ON,Everlight and Freescale. Main products comprise IC,Modules,Potentiometer,IC Socket,Relay,Connector.Our parts cover such applications as commercial,industrial, and automotives areas.

We are looking forward to setting up business relationship with you and hope to provide you with the best service and solution. Let us make a better world for our industry!



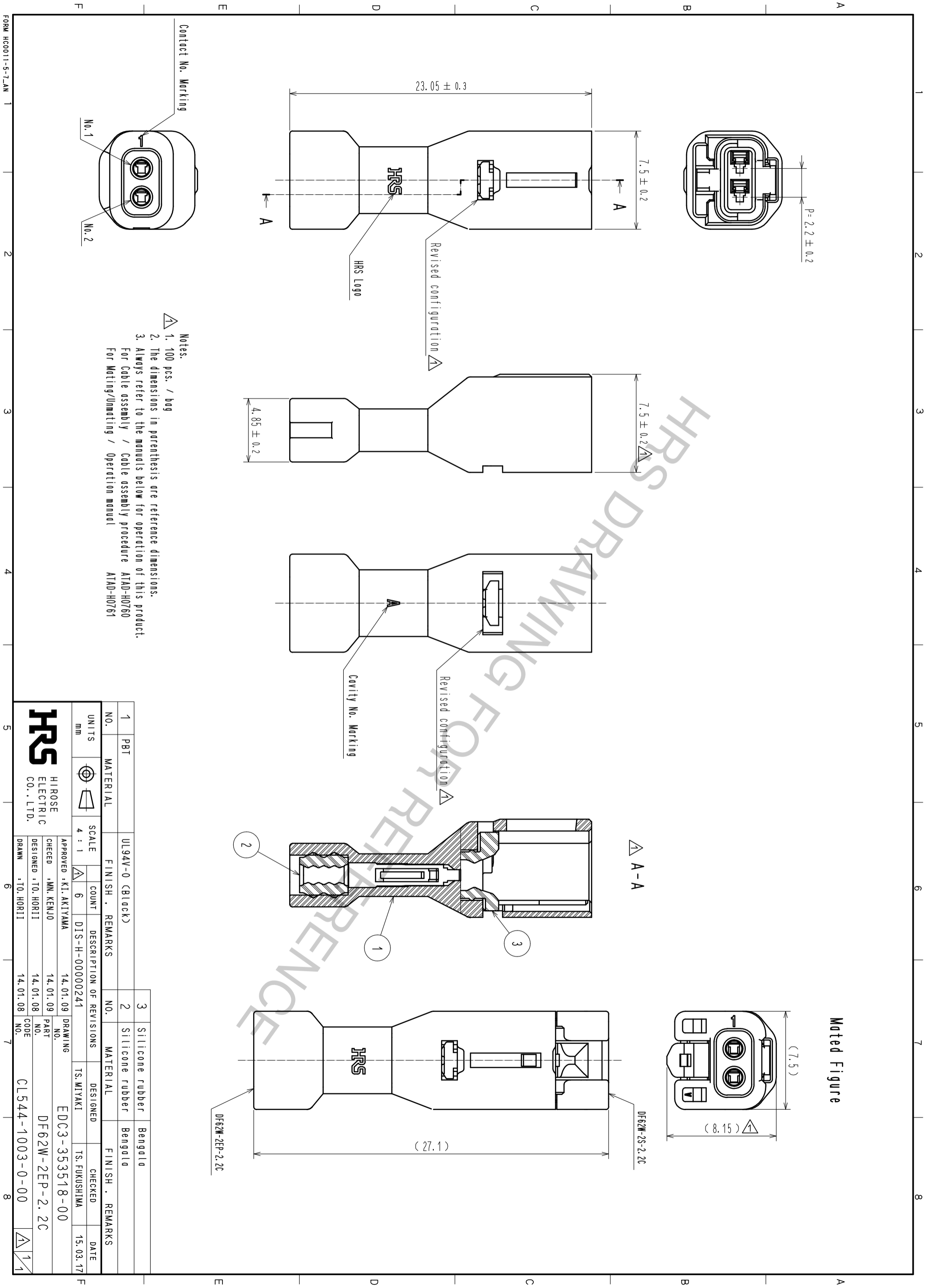
Contact us

Tel: +86-755-8981 8866 Fax: +86-755-8427 6832

Email & Skype: info@chipsmall.com Web: www.chipsmall.com

Address: A1208, Overseas Decoration Building, #122 Zhenhua RD., Futian, Shenzhen, China





- Notes:
1. 100 pcs. / bag
 2. The dimensions in parenthesis are reference dimensions.
 3. Always refer to the manuals below for operation of this product.
For Cable assembly / Cable assembly procedure ATAD-H0760
For Mating/Umating / Operation manual ATAD-H0761

1	PBT	UL94V-0 (Black)						
NO.	MATERIAL	FINISH . REMARKS	NO.	MATERIAL	FINISH . REMARKS	NO.	MATERIAL	FINISH . REMARKS
1	PBT	UL94V-0 (Black)	2	Silicone rubber	Bengala	3	Silicone rubber	Bengala
UNITS	mm	SCALE	4 : 1	SCALE	4 : 1	SCALE	4 : 1	SCALE
COUNT	6	DESCRIPTION OF REVISIONS	DIS-H-00000241	DESIGNED	TS. MIYAKI	CHECKED	TS. FUKUSHIMA	DATE
APPROVED	KI. AKIYAMA	14.01.09	DRAWING	EDC3-353518-00	15.03.17			
CHECKED	MM. KENJU	14.01.09	PART	DF62W-2EP-2.2C				
DESIGNED	TO. HORII	14.01.08	CODE	CL544-1003-0-00				
DRAWN	TO. HORII	14.01.08	NO.					

FORM HCO011-5-7-AN