



Chipsmall Limited consists of a professional team with an average of over 10 year of expertise in the distribution of electronic components. Based in Hongkong, we have already established firm and mutual-benefit business relationships with customers from,Europe,America and south Asia,supplying obsolete and hard-to-find components to meet their specific needs.

With the principle of “Quality Parts,Customers Priority,Honest Operation,and Considerate Service”,our business mainly focus on the distribution of electronic components. Line cards we deal with include Microchip,ALPS,ROHM,Xilinx,Pulse,ON,Everlight and Freescale. Main products comprise IC,Modules,Potentiometer,IC Socket,Relay,Connector.Our parts cover such applications as commercial,industrial, and automotives areas.

We are looking forward to setting up business relationship with you and hope to provide you with the best service and solution. Let us make a better world for our industry!



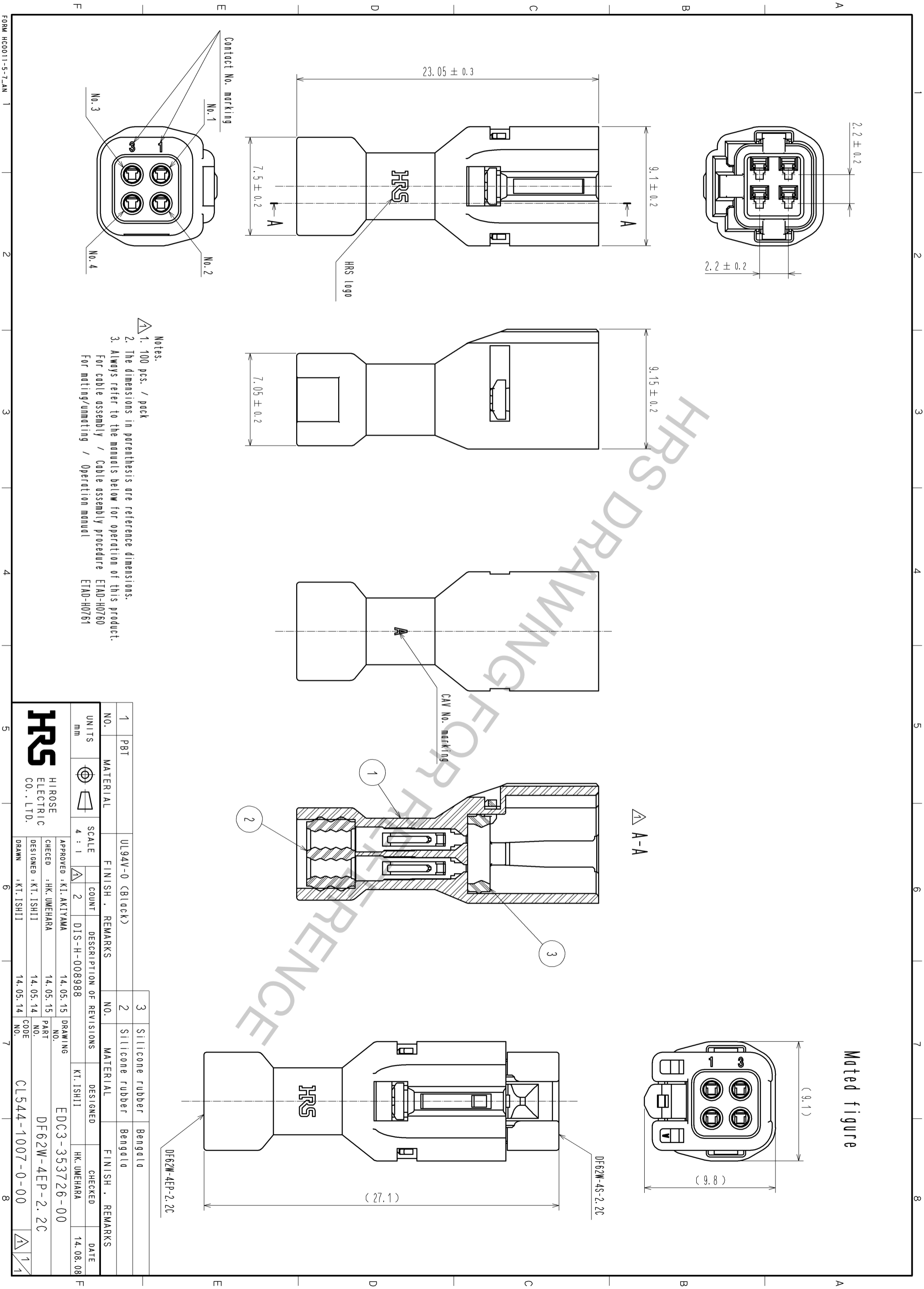
Contact us

Tel: +86-755-8981 8866 Fax: +86-755-8427 6832

Email & Skype: info@chipsmall.com Web: www.chipsmall.com

Address: A1208, Overseas Decoration Building, #122 Zhenhua RD., Futian, Shenzhen, China





- Notes:
1. 100 pcs. / pack
 2. The dimensions in parenthesis are reference dimensions.
 3. Always refer to the manuals below for operation of this product.
For cable assembly / Cable assembly procedure ETAD-H0760
For mating/unmating / Operation manual ETAD-H0761

1	PBT	UL94V-0 (Black)							
NO.	MATERIAL	FINISH	REMARKS	NO.	MATERIAL	FINISH	REMARKS	NO.	MATERIAL
1	PBT	UL94V-0 (Black)		2	Silicone rubber	Bengala		3	Silicone rubber
UNITS	SCALE	COUNT	DESCRIPTION OF REVISIONS	DESIGNED	CHECKED	DATE			
mm	4 : 1	2	DIS-H-008988	KT. ISHII	HK. UMEHARA	14.08.08			
APPROVED : KI. AKIYAMA			14.05.15	DRAWING	EDC3-353726-00				
CHECKED : HK. UMEHARA			14.05.15	PART	DF62W-4EP-2.2C				
DESIGNED : KT. ISHII			14.05.14	PART	DF62W-4EP-2.2C				
DRAWN : KT. ISHII			14.05.14	CODE	CL544-1007-0-00				

Mated figure

FORM HCO011-5-7-AN 1 2 3 4 5 6 7 8