



Chipsmall Limited consists of a professional team with an average of over 10 year of expertise in the distribution of electronic components. Based in Hongkong, we have already established firm and mutual-benefit business relationships with customers from,Europe,America and south Asia,supplying obsolete and hard-to-find components to meet their specific needs.

With the principle of “Quality Parts,Customers Priority,Honest Operation,and Considerate Service”,our business mainly focus on the distribution of electronic components. Line cards we deal with include Microchip,ALPS,ROHM,Xilinx,Pulse,ON,Everlight and Freescale. Main products comprise IC,Modules,Potentiometer,IC Socket,Relay,Connector.Our parts cover such applications as commercial,industrial, and automotives areas.

We are looking forward to setting up business relationship with you and hope to provide you with the best service and solution. Let us make a better world for our industry!



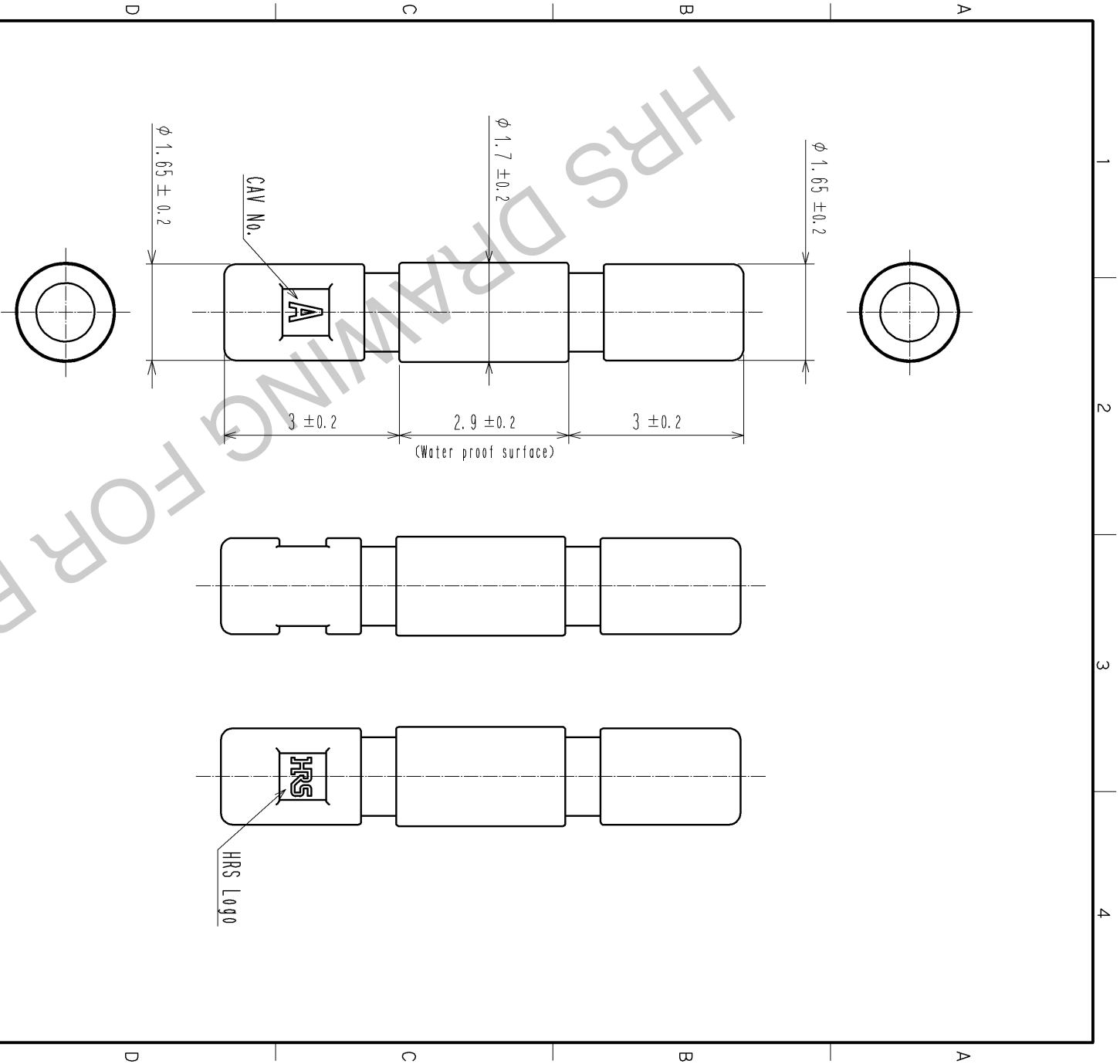
Contact us

Tel: +86-755-8981 8866 Fax: +86-755-8427 6832

Email & Skype: info@chipsmall.com Web: www.chipsmall.com

Address: A1208, Overseas Decoration Building, #122 Zhenhua RD., Futian, Shenzhen, China





Note1. 100 pcs. / bag
 2. Always refer to the manuals below for operation of this product.
 For Cable assembly / Cable assembly procedure ETAD-H0760
 For Mating / Unmating / Operation manual ETAD-H0761

1	PBT	UL94V-0 (Black)	FINISH . REMARKS	NO.	MATERIAL	FINISH . REMARKS	
UNITS	MATERIAL	SCALE	COUNT	DESCRIPTION OF REVISIONS	DESIGNED	CHECKED	DATE
mm		10:1					
APPROVED : KI. AKIYAMA		14.01.20		DRAWING NO.		EDC4-354088-00	
CHECKED : MN. KENJŌ		14.01.20		PART NO.		DF62W-WP	
DESIGNED : KI. ISHII		14.01.20		CODE NO.		CL544-1014-6-00	
DRAWN : KI. ISHII		14.01.20					