



Chipsmall Limited consists of a professional team with an average of over 10 year of expertise in the distribution of electronic components. Based in Hongkong, we have already established firm and mutual-benefit business relationships with customers from,Europe,America and south Asia,supplying obsolete and hard-to-find components to meet their specific needs.

With the principle of “Quality Parts,Customers Priority,Honest Operation,and Considerate Service”,our business mainly focus on the distribution of electronic components. Line cards we deal with include Microchip,ALPS,ROHM,Xilinx,Pulse,ON,Everlight and Freescale. Main products comprise IC,Modules,Potentiometer,IC Socket,Relay,Connector.Our parts cover such applications as commercial,industrial, and automotives areas.

We are looking forward to setting up business relationship with you and hope to provide you with the best service and solution. Let us make a better world for our industry!



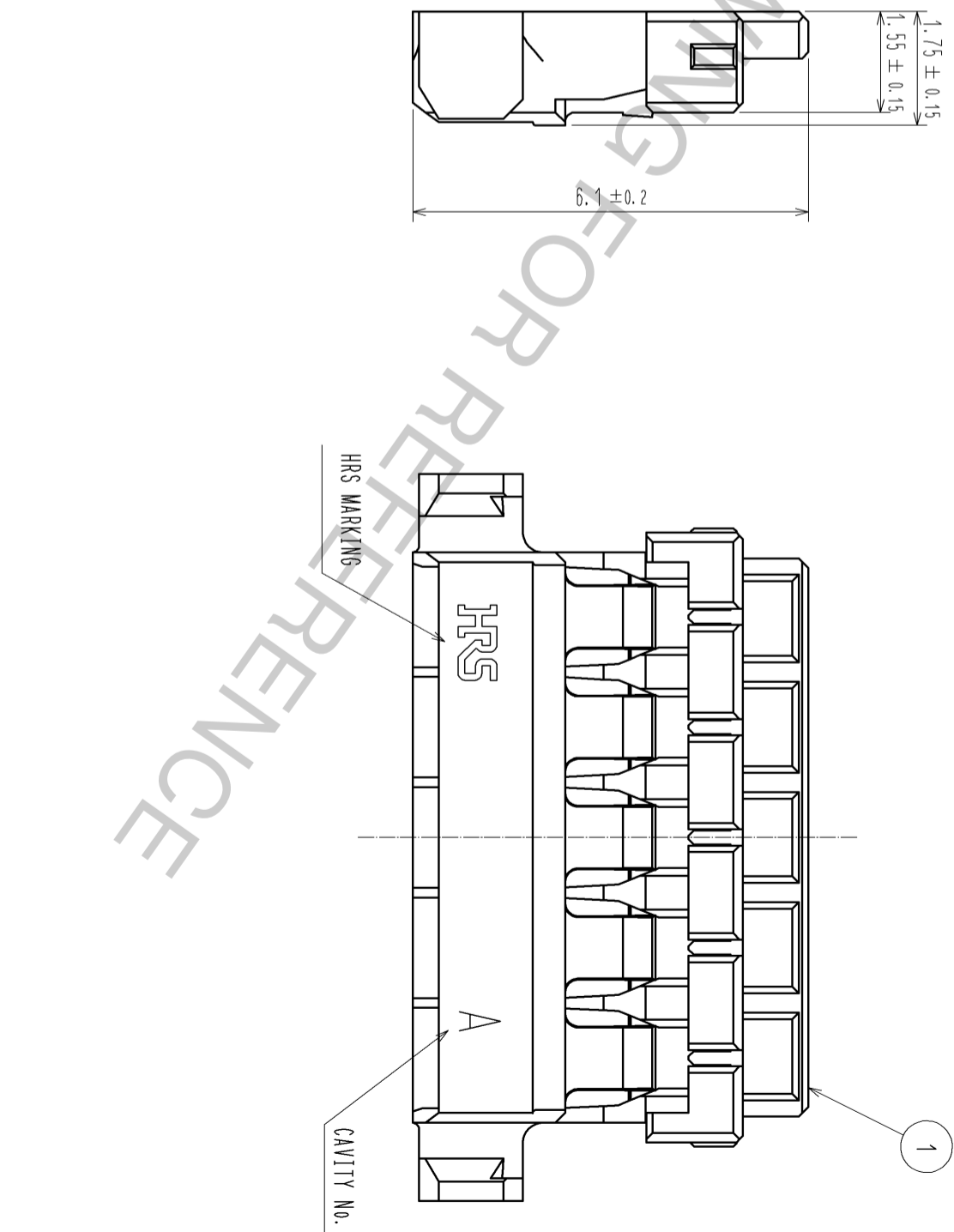
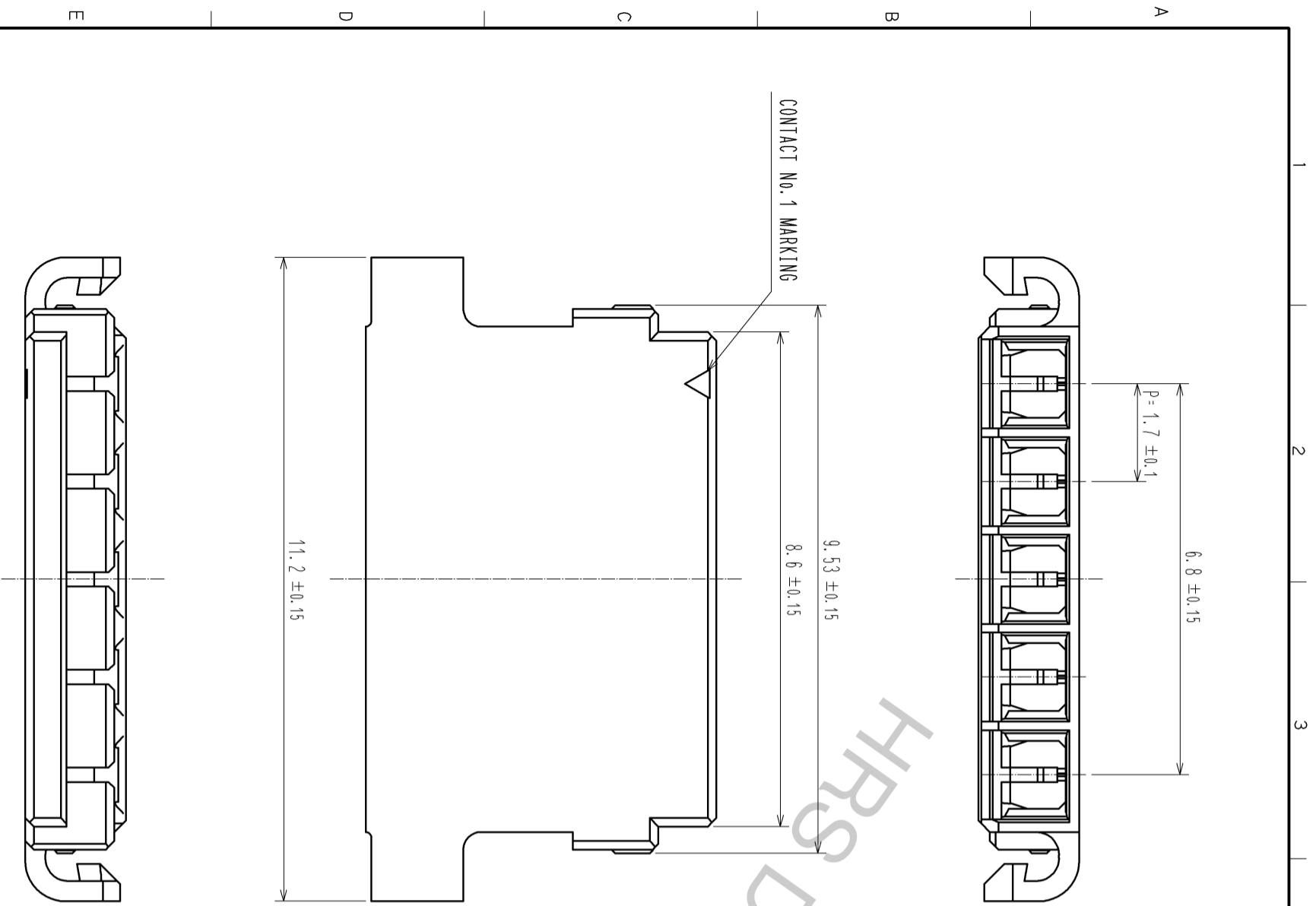
## Contact us

Tel: +86-755-8981 8866 Fax: +86-755-8427 6832

Email & Skype: info@chipsmall.com Web: www.chipsmall.com

Address: A1208, Overseas Decoration Building, #122 Zhenhua RD., Futian, Shenzhen, China





NO.	UNITS	MATERIAL	FINISH	REMARKS	NO.	MATERIAL	FINISH	REMARKS	
1	mm	LCP		UL94V-0, NATURAL					
SCALE		COUNT		DESCRIPTION OF REVISIONS		DESIGNED		CHECKED	
10 : 1		1							
APPROVED		DESIGNED		DRAWING		PART		DATE	
: KI. AKIYAMA		: TT. OHSAKO		13.09.17		EDC3-347308-00		13.09.17	
CHECKED		DRAWN		NO.		CODE			
: OM. MIYAMOTO		: TT. OHSAKO		13.09.17		CL666-6002-0-00			
DESIGNED		NO.		NO.					
: TT. OHSAKO		13.09.17		13.09.17					
DRAWN		NO.		NO.					
: TT. OHSAKO		13.09.17		13.09.17					