



Chipsmall Limited consists of a professional team with an average of over 10 year of expertise in the distribution of electronic components. Based in Hongkong, we have already established firm and mutual-benefit business relationships with customers from,Europe,America and south Asia,supplying obsolete and hard-to-find components to meet their specific needs.

With the principle of “Quality Parts,Customers Priority,Honest Operation,and Considerate Service”,our business mainly focus on the distribution of electronic components. Line cards we deal with include Microchip,ALPS,ROHM,Xilinx,Pulse,ON,Everlight and Freescale. Main products comprise IC,Modules,Potentiometer,IC Socket,Relay,Connector.Our parts cover such applications as commercial,industrial, and automotives areas.

We are looking forward to setting up business relationship with you and hope to provide you with the best service and solution. Let us make a better world for our industry!



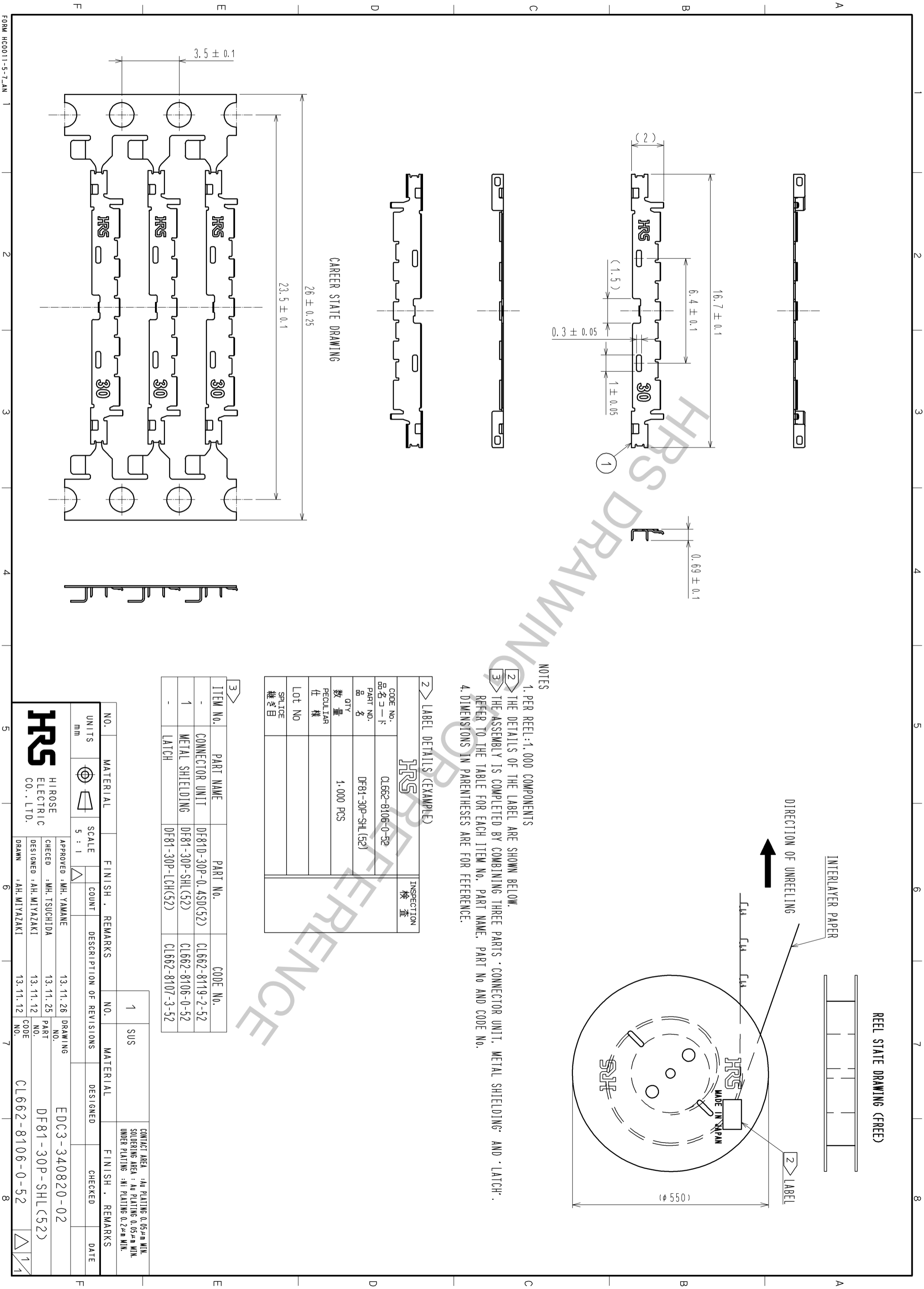
## Contact us

Tel: +86-755-8981 8866 Fax: +86-755-8427 6832

Email & Skype: info@chipsmall.com Web: www.chipsmall.com

Address: A1208, Overseas Decoration Building, #122 Zhenhua RD., Futian, Shenzhen, China





NOTES

- 1. PER REEL: 1,000 COMPONENTS
- 2. THE DETAILS OF THE LABEL ARE SHOWN BELOW.
- 3. THE ASSEMBLY IS COMPLETED BY COMBINING THREE PARTS: CONNECTOR UNIT, METAL SHIELDING AND LATCH.
- 4. DIMENSIONS IN PARENTHESES ARE FOR REFERENCE.

2 LABEL DETAILS (EXAMPLE)

CODE NO. 品名コード CL662-8106-0-52	INSPECTION 検査
PART NO. 品名 DF81-30P-SHL(52)	
QTY 数量 1,000 PCS	
PECULIAR 仕様	
Lot NO	
SPLICE 継ぎ目	

3

ITEM NO.	PART NAME	PART No.	CODE No.
-	CONNECTOR UNIT	DF81D-30P-0.4SD(52)	CL662-8119-2-52
1	METAL SHIELDING	DF81-30P-SHL(52)	CL662-8106-0-52
-	LATCH	DF81-30P-LCH(52)	CL662-8107-3-52

NO.	SUS	CONTACT AREA : Au PLATING 0.05μm MIN. SOLDERING AREA : Au PLATING 0.05μm MIN. UNDER PLATING : Ni PLATING 0.2μm MIN.
1	SUS	

NO.	UNITS	MATERIAL	FINISH	REMARKS	NO.	MATERIAL	FINISH	REMARKS
1	mm				1	SUS		

SCALE	COUNT	DESCRIPTION OF REVISIONS	DESIGNED	CHECKED	DATE
5 : 1					

APPROVED	DESIGNED	DRAWING	NO.	DATE
MH. YAMANE	AH. MIYAZAKI		13.11.26	13.11.12
CHECKED	DESIGNED	PART	NO. <td>DATE </td>	DATE
MH. TSUCHIDA	AH. MIYAZAKI	DF81-30P-SHL(52)	13.11.25	13.11.12

NO.	DRAWING	NO.	DATE
1	EDC3-340820-02		

NO.	CODE	NO.	DATE
1	CL662-8106-0-52		