



Chipsmall Limited consists of a professional team with an average of over 10 year of expertise in the distribution of electronic components. Based in Hongkong, we have already established firm and mutual-benefit business relationships with customers from,Europe,America and south Asia,supplying obsolete and hard-to-find components to meet their specific needs.

With the principle of "Quality Parts,Customers Priority,Honest Operation,and Considerate Service",our business mainly focus on the distribution of electronic components. Line cards we deal with include Microchip,ALPS,ROHM,Xilinx,Pulse,ON,Everlight and Freescale. Main products comprise IC,Modules,Potentiometer,IC Socket,Relay,Connector.Our parts cover such applications as commercial,industrial, and automotives areas.

We are looking forward to setting up business relationship with you and hope to provide you with the best service and solution. Let us make a better world for our industry!



## Contact us

Tel: +86-755-8981 8866 Fax: +86-755-8427 6832

Email & Skype: [info@chipsmall.com](mailto:info@chipsmall.com) Web: [www.chipsmall.com](http://www.chipsmall.com)

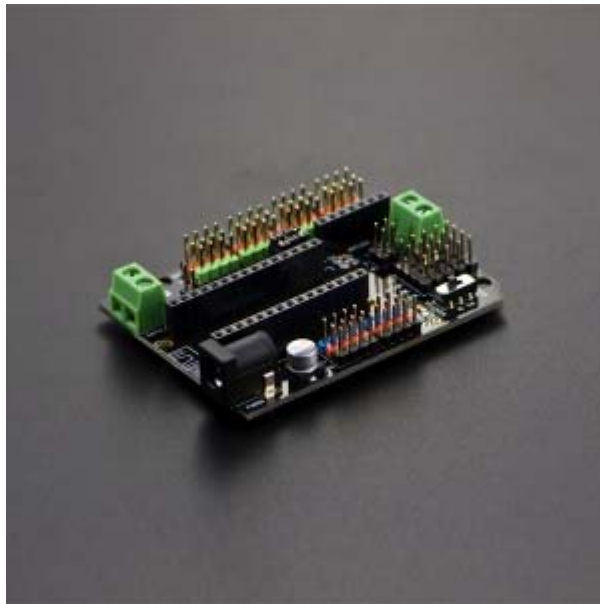
Address: A1208, Overseas Decoration Building, #122 Zhenhua RD., Futian, Shenzhen, China





## Arduino Nano IO Shield (SKU: DFR0012)

---



### Contents

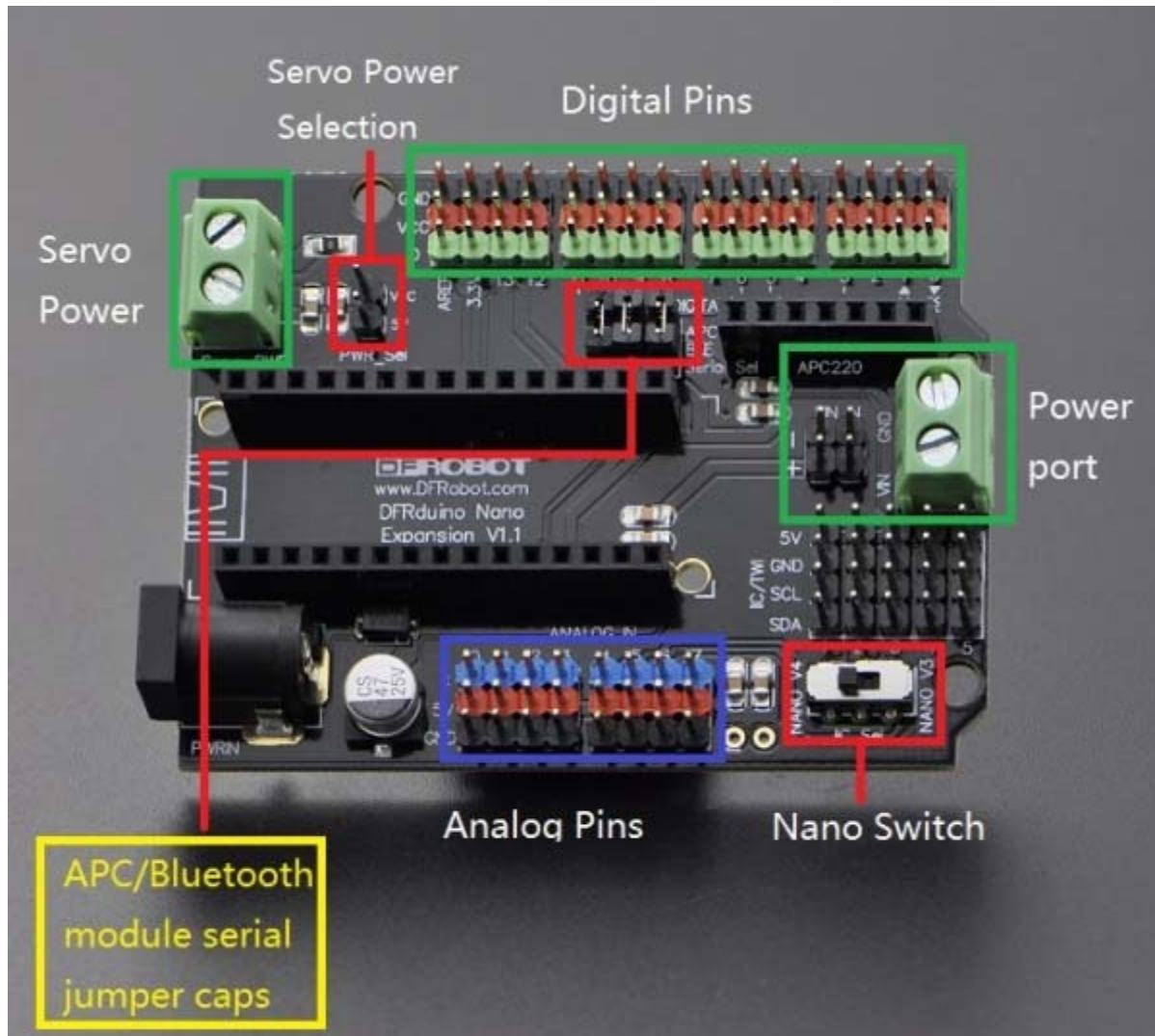
- [1 Introduction](#)
- [2 Diagram](#)
- [3 Compatible List](#)

### Introduction

The Arduino Nano I/O Shield acts as a expansion board for the Arduino Nano and DFRduino Nano microcontrollers. There are several different options for power input. The form factor of the Nano I/O Shield board is the same as the Arduino UNO/Leonardo. In addition, each pinout includes 5V and GND pins for easy connection to sensors or servos. This unit comes fully assembled. The board also has a space specifically for the DFRobot [bluetooth module](#) and [ACP220 module](#). Several I2C pins are also exposed.



## Diagram



DFRduino Nano IO Shield V1.1

1. APC/Bluetooth module serial jumper caps: When you make a program with Nano which is using Atmega328 chip, please remove the wireless device, or remove "TX" and "RX" jumper caps
2. Nano Switch: The Nano shield is compatible with our Nano V3 and Nano V4. Since the difference the IIC interface, we add a switch on the shield, you could select the right board with the right IIC pins

### NOTE:

There are three jumper caps on the shield (APC/Bluetooth module serial jumper caps).

When you want to power the shield with usb cable, please move 'GND' jumper cap to Servo power selection port.

When you want to use external servo power, please move the jumper cap back.  
Or it will damage your microcontroller

## Compatible List

- Arduino Nano
- [DFRduino Nano V3](#)
- [DFRduino Nano V4](#)
- [Bluno Nano](#)
- Any Nano microcontroller which have the same pinout as Arduino Nano