



Chipsmall Limited consists of a professional team with an average of over 10 year of expertise in the distribution of electronic components. Based in Hongkong, we have already established firm and mutual-benefit business relationships with customers from,Europe,America and south Asia,supplying obsolete and hard-to-find components to meet their specific needs.

With the principle of “Quality Parts,Customers Priority,Honest Operation,and Considerate Service”,our business mainly focus on the distribution of electronic components. Line cards we deal with include Microchip,ALPS,ROHM,Xilinx,Pulse,ON,Everlight and Freescale. Main products comprise IC,Modules,Potentiometer,IC Socket,Relay,Connector.Our parts cover such applications as commercial,industrial, and automotives areas.

We are looking forward to setting up business relationship with you and hope to provide you with the best service and solution. Let us make a better world for our industry!



## Contact us

Tel: +86-755-8981 8866 Fax: +86-755-8427 6832

Email & Skype: info@chipsmall.com Web: www.chipsmall.com

Address: A1208, Overseas Decoration Building, #122 Zhenhua RD., Futian, Shenzhen, China





## DFRobot Ambient Light Sensor SKU: DFR0026



### Contents

- [1 Introduction](#)
- [2 Specification](#)
- [3 Application](#)
- [4 PinOut](#)
- [5 Tutorial](#)
  - [5.1 Connection Diagram](#)
  - [5.2 Sample Code](#)
  - [5.3 Result](#)
- [6 FAQ](#)

### Introduction

Here comes DFRobot's new Analog Ambient Light Sensor. Brand new design and much more convenient to use. This module helps you to detect the light density and reflect the analog voltage signal back to an Arduino controller. You can set the threshold of voltage level to trigger other units on an Arduino project.

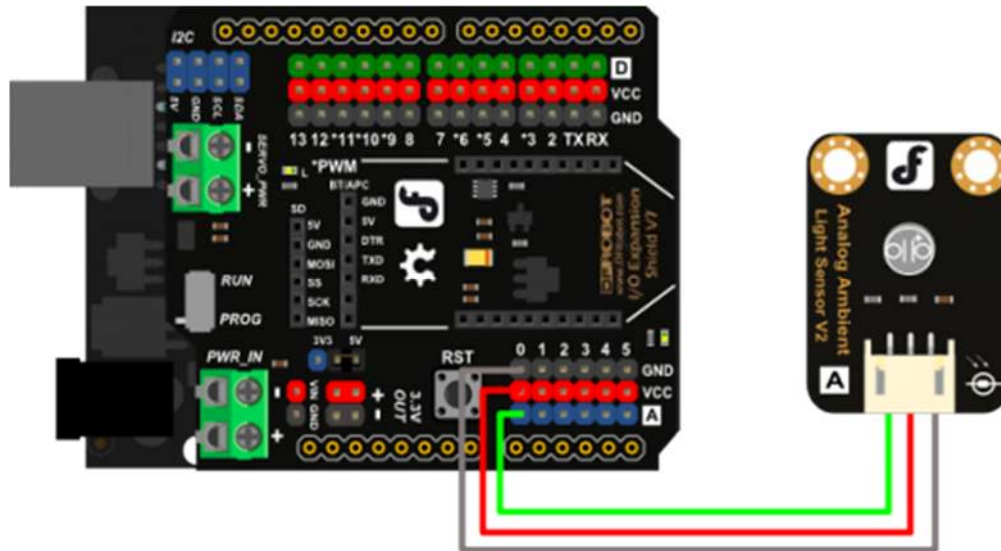
### Specification

- Supply Voltage: 3.3V to 5V
- Illumination range : 1 Lux to 6000 Lux
- Responsive time : 15us
- Interface: Analog
- Size: 22x30mm



# Tutorial

## Connection Diagram



Arduino	Sensor
A0	GREEN
5V	RED
GND	GRAY

## Sample Code

```
void setup()
{
  Serial.begin(9600); // open serial port, set the baud rate to 9600 bps
}
void loop()
{
  int val;
  val=analogRead(0); //connect grayscale sensor to Analog 0
  Serial.println(val,DEC); //print the value to serial
}
```

```
    delay(100);  
}
```

## Result

Open the serial port monitor, set the baud rate according to the program for 9600. The light intensity around the sensor is different, the received data is also different. The more light, the bigger the data.

## FAQ

**Q1.** Some general Arduino Problems/ FAQ/ Tips, very good to know.

**A1.** Click [the topic link](#) on DFRobot Forum.

**Q2.** The unit of the output from these sensors is? How can I convert it to LUX?

**A2.** Well, it is only a simple analog sensor that could show you the relationship of the light intensity (within its detect range) and voltage (0-5V). If you want to transfer the voltage to unit in LUX, then well, it requires that you have a commercial Light Intensity Meter [like this](#) that can display LUX info, then you can match the readings to the sensor's analog reading, then you could a map to describe the relationship of voltage and ambient light density.

For any question/advice/cool idea to share, please visit [DFRobot Forum](#).