



Chipsmall Limited consists of a professional team with an average of over 10 year of expertise in the distribution of electronic components. Based in Hongkong, we have already established firm and mutual-benefit business relationships with customers from,Europe,America and south Asia,supplying obsolete and hard-to-find components to meet their specific needs.

With the principle of “Quality Parts,Customers Priority,Honest Operation,and Considerate Service”,our business mainly focus on the distribution of electronic components. Line cards we deal with include Microchip,ALPS,ROHM,Xilinx,Pulse,ON,Everlight and Freescale. Main products comprise IC,Modules,Potentiometer,IC Socket,Relay,Connector.Our parts cover such applications as commercial,industrial, and automotives areas.

We are looking forward to setting up business relationship with you and hope to provide you with the best service and solution. Let us make a better world for our industry!



## Contact us

Tel: +86-755-8981 8866 Fax: +86-755-8427 6832

Email & Skype: info@chipsmall.com Web: www.chipsmall.com

Address: A1208, Overseas Decoration Building, #122 Zhenhua RD., Futian, Shenzhen, China





# Analog Sound Sensor SKU: DFR0034

---



## Contents

- [1 Introduction](#)
- [2 Specification](#)
- [3 PinOut](#)
- [4 Tutorial](#)
  - [4.1 Connection Diagram](#)
  - [4.2 Sample Code](#)
  - [4.3 Result](#)
- [5 Trouble shooting](#)

## Introduction

This is an updated version of the Analog Sound Sensor. Analog Sound Sensor is typically used in detecting the loudness in ambient, the Arduino can collect its output signal by imitating the input interface. You may use it to make some funny interactive works such as a voice operated switch.

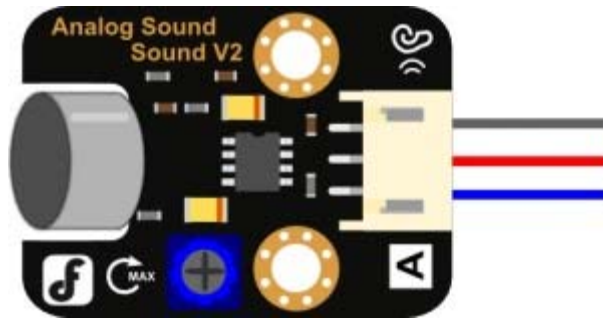
As one of our new version of breakout boards, we have improved the analog sound sensor in below:

- Wide voltage range from 3.3V to 5V
- Standard assembling structure (two 3mm holes with multiple of 5cm as interval)
- Easily recognitive interfaces of sensors ("A" for analog and "D" for digital)
- Icons to simply illustrate sensor function
- High quality connector
- Immersion gold surface

## Specification

- Supply Voltage: 3.3V to 5V
- Detects the sound intensity
- Interface: Analog
- Size:22x30mm

## PinOut



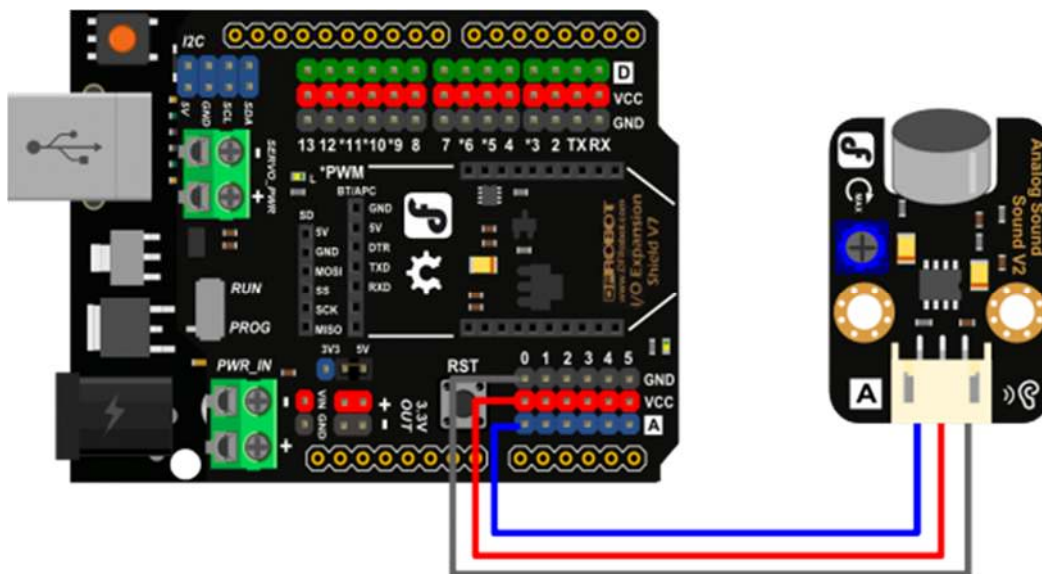
Blue : Analog signal output

Red : VCC

Black : GND

## Tutorial

### Connection Diagram



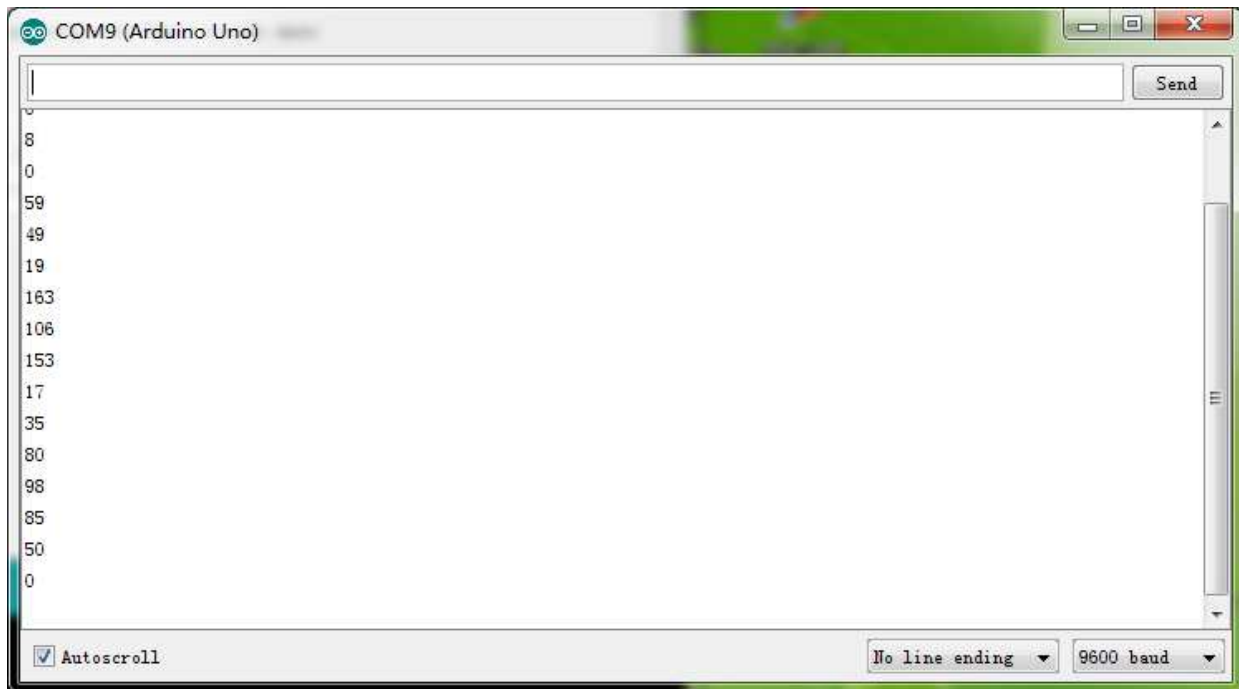


## Sample Code

```
void setup()
{
  Serial.begin(9600); // open serial port, set the baud rate to 9600 bps
}
void loop()
{
  int val;
  val=analogRead(0); //connect mic sensor to Analog 0
  Serial.println(val,DEC); //print the sound value to serial
  delay(100);
}
```

## Result

Open the Serial monitor, Baud rate: 9600.



## Trouble shooting

More question and cool idea, visit [DFRobot Forum](#)