



Chipsmall Limited consists of a professional team with an average of over 10 year of expertise in the distribution of electronic components. Based in Hongkong, we have already established firm and mutual-benefit business relationships with customers from,Europe,America and south Asia,supplying obsolete and hard-to-find components to meet their specific needs.

With the principle of “Quality Parts,Customers Priority,Honest Operation,and Considerate Service”,our business mainly focus on the distribution of electronic components. Line cards we deal with include Microchip,ALPS,ROHM,Xilinx,Pulse,ON,Everlight and Freescale. Main products comprise IC,Modules,Potentiometer,IC Socket,Relay,Connector.Our parts cover such applications as commercial,industrial, and automotives areas.

We are looking forward to setting up business relationship with you and hope to provide you with the best service and solution. Let us make a better world for our industry!



Contact us

Tel: +86-755-8981 8866 Fax: +86-755-8427 6832

Email & Skype: info@chipsmall.com Web: www.chipsmall.com

Address: A1208, Overseas Decoration Building, #122 Zhenhua RD., Futian, Shenzhen, China





Analog Rotation Sensor V1 (SKU: DFR0054)

From Robot Wiki



Contents

- 1 Introduction
- 2 Specification
- 3 Pin Definition
- 4 Connection Diagram
- 5 Sample Code

Introduction

Analog Rotation Sensor V1 (SKU: DFR0054)

The *DFRobot Rotation Sensor V1* is arduino compatible and can be rotated upto 300-degree. It is based on the potentiometer. With the Arduino sensor expansion board, in combination, it can be very easy to achieve position-dependent interaction with the rotating effect or produce MIDI instrument.

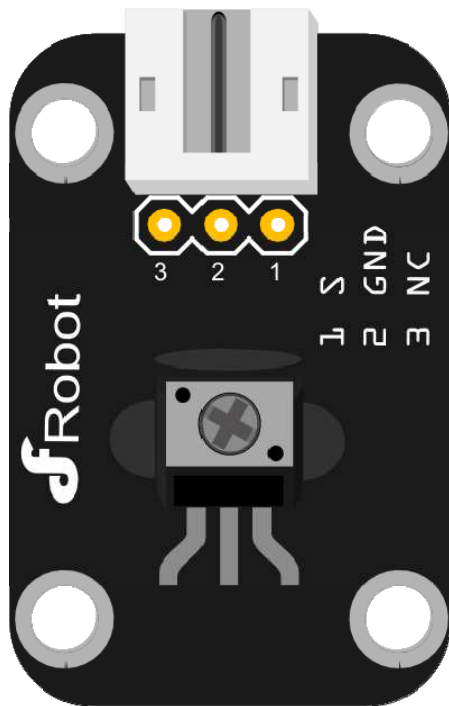
Specification

- Interface type: Analog
- 300 degree rotation sensor

Pin Definition

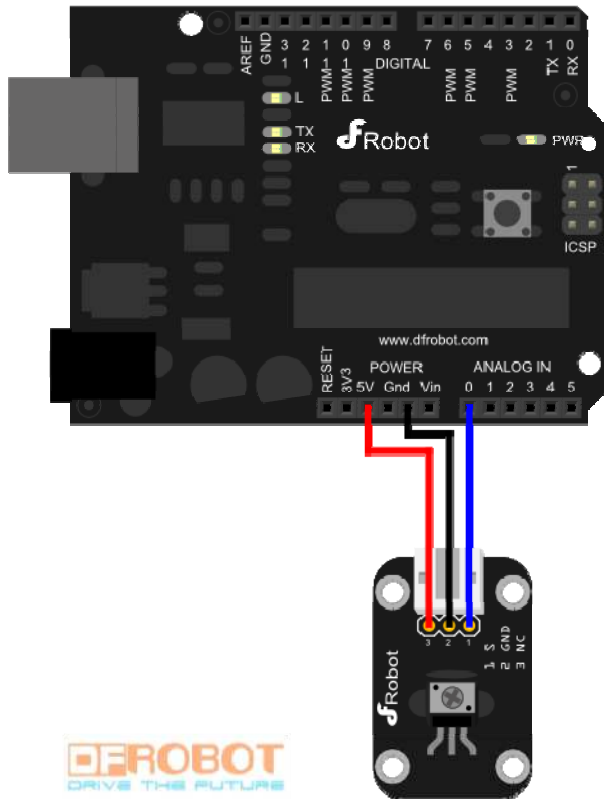
The definition of gas sensor pin is

1. Signal Output
2. GND
3. Power



Analog Sensor Pin Definition

Connection Diagram



Analog sensor connection diagram

Sample Code

```
// # Editor      : Lauren from DFRobot
// # Date        : 30.12.2011

// #
// # Editor      : Lauren from DFRobot
// # Date        : 17.01.2012
```

```
// # Product name: Rotation Sensor v1/v2 or Analog Slide Position Sensor
// # Product SKU : DFR0054/DFR0058/DFR0053
// # Version      : 1.0

// # Description:
// # the sample to drive some analog sensors

// # Connection:
// #           Signal output pin  -> Analog pin 0
// #

void setup()
{
  Serial.begin(9600);    //Set serial baud rate to 9600 bps
}
void loop()
{
  int val;
  val=analogRead(0);    //Read slider value from analog 0
  Serial.println(val,DEC); //Print the value to serial port
  delay(100);
}
```