



Chipsmall Limited consists of a professional team with an average of over 10 year of expertise in the distribution of electronic components. Based in Hongkong, we have already established firm and mutual-benefit business relationships with customers from,Europe,America and south Asia,supplying obsolete and hard-to-find components to meet their specific needs.

With the principle of “Quality Parts,Customers Priority,Honest Operation,and Considerate Service”,our business mainly focus on the distribution of electronic components. Line cards we deal with include Microchip,ALPS,ROHM,Xilinx,Pulse,ON,Everlight and Freescale. Main products comprise IC,Modules,Potentiometer,IC Socket,Relay,Connector.Our parts cover such applications as commercial,industrial, and automotives areas.

We are looking forward to setting up business relationship with you and hope to provide you with the best service and solution. Let us make a better world for our industry!



## Contact us

Tel: +86-755-8981 8866 Fax: +86-755-8427 6832

Email & Skype: [info@chipsmall.com](mailto:info@chipsmall.com) Web: [www.chipsmall.com](http://www.chipsmall.com)

Address: A1208, Overseas Decoration Building, #122 Zhenhua RD., Futian, Shenzhen, China





## SHT1x Humidity and Temperature Sensor (SKU: DFR0066)

---



SHT1x Humidity and Temperature Sensor (SKU: DFR0066)

### Contents

- [1 Introduction](#)
- [2 Specifition](#)
- [3 Applications](#)
- [4 connecting diagram](#)
- [5 Sample Code](#)

### Introduction

This is uses *SHT1x sensor*. SHT1x is individually calibrated in a precision humidity chamber. The calibration coefficients are programmed into an OTP memory on the chip. These coefficients are used to internally calibrate the signals from the sensors. The 2-wire serial interface and internal voltage regulation allows for easy and fast system integration. The tiny size and low power consumption makes SHT1x the ultimate choice for even the most demanding applications.

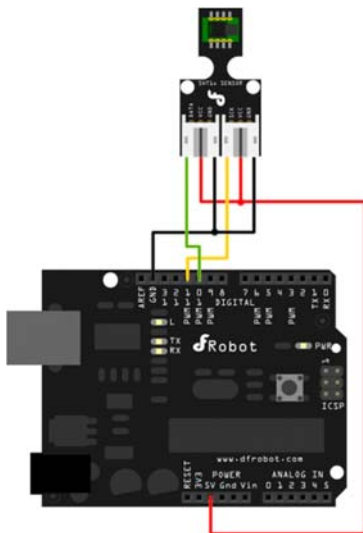
## Specification

- 2 factory calibrated sensors for relative humidity & temperature
- Digital 2-wire interface
- Precise dewpoint calculation possible
- Measurement range: 0-100% RH
- Absolute RH accuracy: +/- 2% RH (10...90% RH)
- Repeatability RH: +/- 0.1% RH
- Temp. accuracy: +/- 0.3°C @ 25°C
- Fast response time < 4 sec.
- Low power consumption (typ. 30  $\mu$ W)
- Low cost
- High precision sensor at low cost
- Leading CMOSens Technology for superior long-term stability

## Applications

- Precise data logging
- Transmitters
- Automation & process control
- Building control and HVAC
- Test & Measurement
- Medical

## connecting diagram



## Sample Code

```
//Arduino Sample Code for SHT1x Humidity and Temperature Sensor
//www.DFRobot.com
//Version 1.0

#include <SHT1x.h>

// Specify data and clock connections and instantiate SHT1x object
#define dataPin 10
#define clockPin 11
SHT1x sht1x(dataPin, clockPin);

void setup()
{
    Serial.begin(38400); // Open serial connection to report values to host
    Serial.println("Starting up");
}

void loop()
{
    float temp_c;
    float temp_f;
    float humidity;

    // Read values from the sensor
    temp_c = sht1x.readTemperatureC();
    temp_f = sht1x.readTemperatureF();
    humidity = sht1x.readHumidity();

    // Print the values to the serial port
    Serial.print("Temperature: ");
    Serial.print(temp_c, DEC);
    Serial.print("C / ");
```

```
Serial.print(temp_f, DEC);  
Serial.print("F. Humidity: ");  
Serial.print(humidity);  
Serial.println("%");  
  
delay(2000);  
}
```