



Chipsmall Limited consists of a professional team with an average of over 10 year of expertise in the distribution of electronic components. Based in Hongkong, we have already established firm and mutual-benefit business relationships with customers from,Europe,America and south Asia,supplying obsolete and hard-to-find components to meet their specific needs.

With the principle of "Quality Parts,Customers Priority,Honest Operation,and Considerate Service",our business mainly focus on the distribution of electronic components. Line cards we deal with include Microchip,ALPS,ROHM,Xilinx,Pulse,ON,Everlight and Freescale. Main products comprise IC,Modules,Potentiometer,IC Socket,Relay,Connector.Our parts cover such applications as commercial,industrial, and automotives areas.

We are looking forward to setting up business relationship with you and hope to provide you with the best service and solution. Let us make a better world for our industry!



Contact us

Tel: +86-755-8981 8866 Fax: +86-755-8427 6832

Email & Skype: info@chipsmall.com Web: www.chipsmall.com

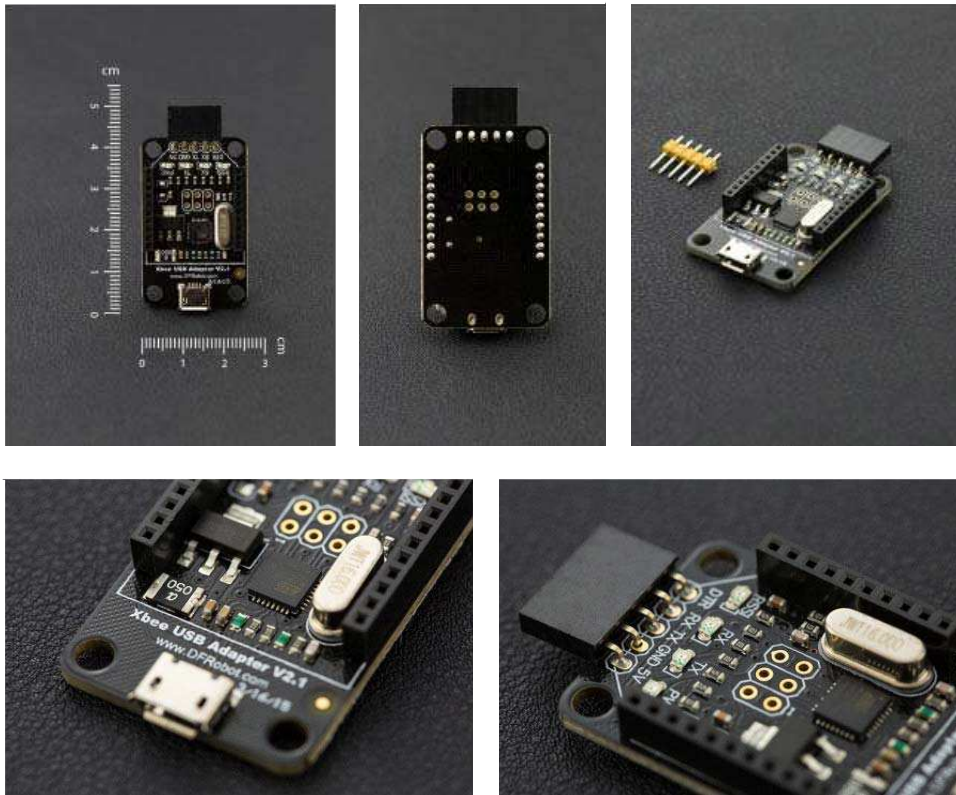
Address: A1208, Overseas Decoration Building, #122 Zhenhua RD., Futian, Shenzhen, China





XBee USB Adapter V2 - Atmega8U2

SKU:DFR0174



INTRODUCTION

The XBee USB Adapter V2 is an update version from DFRobot. It features an Atmega8U2 programmed as a USB-to-serial converter, the same chip found on the Arduino Uno. The Atmega8U2 firmware uses the standard USB COM drivers, and no external driver is needed. However, on Windows, a .inf file is required. It's compatible with all the products using XBee socket. It provides a faster and stable wireless communication for your projects.

The DFRobot Xbee USB adapter is used for the XBee module configuration parameters to facilitate wireless data transmission. It can be easily connected to a PC via USB cable. Furthermore, it can be used with XBee-setting support software X-CTU. It can also be used as a USB-TTL adapter.

It is compatible with:

- All XBee modules including the Series 1 and Series 2.5, standard and Pro version
- Bluetooth Bee
- BLE Link (Support wireless programming)

V2.1 Update: Mini USB port has been replaced by Micro USB port, which is easy to available and compatible with most of Android phone.

SPECIFICATION

- ZigBee X-CTU Compatible
- Micro USB port
- USB-TTL adapter function
- Voltage: +5V(USB Power)

SHIPPING LIST

- XBee USB Adapter V2 x1