



Chipsmall Limited consists of a professional team with an average of over 10 year of expertise in the distribution of electronic components. Based in Hongkong, we have already established firm and mutual-benefit business relationships with customers from,Europe,America and south Asia,supplying obsolete and hard-to-find components to meet their specific needs.

With the principle of “Quality Parts,Customers Priority,Honest Operation,and Considerate Service”,our business mainly focus on the distribution of electronic components. Line cards we deal with include Microchip,ALPS,ROHM,Xilinx,Pulse,ON,Everlight and Freescale. Main products comprise IC,Modules,Potentiometer,IC Socket,Relay,Connector.Our parts cover such applications as commercial,industrial, and automotives areas.

We are looking forward to setting up business relationship with you and hope to provide you with the best service and solution. Let us make a better world for our industry!



Contact us

Tel: +86-755-8981 8866 Fax: +86-755-8427 6832

Email & Skype: info@chipsmall.com Web: www.chipsmall.com

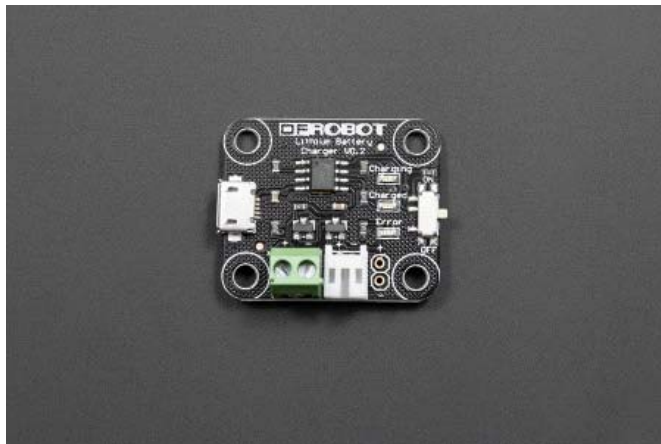
Address: A1208, Overseas Decoration Building, #122 Zhenhua RD., Futian, Shenzhen, China





Lithium Battery Charger

SKU: DFR0208



INTRODUCTION

If you need to charge LiPo batteries, this simple charger will do just that, and do it fast! The Lithium Battery Charger can charge 3.7V LiPo battery at a rate of 500mA per hour. It is designed to charge single-cell Li-Ion or Li-Polymer batteries. Check the datasheet below to see if it will work with your battery.

The board incorporates a charging circuit, status LED, connector for your battery (JST-type used in the batteries we carry), and a micro-USB connector. Four small mounting holes allows this charger to be easily embedded into a project.

SPECIFICATION

- Programmable Charge Current:Up to 1000mA
- Constant-Current/Constant-Voltage
- Types of battery:Single-cell Li-Ion or Li-Polymer batteries
- Interface
 - Charge from Micro USB
 - JST-type or terminal connect to battey
- With ON/OFF switch,3 status LEDs
- Accuracy:1.5% @ Preset 4.2V Charge Voltage

- C/10 Charge Termination
- Operating Ambient Temperature : -40°C~85°C
- Size:3.2x2.7x1cm(1.26"x1.06"x0.39")

SHIPPING LIST

- Lithium Battery Charge x1