



Chipsmall Limited consists of a professional team with an average of over 10 year of expertise in the distribution of electronic components. Based in Hongkong, we have already established firm and mutual-benefit business relationships with customers from,Europe,America and south Asia,supplying obsolete and hard-to-find components to meet their specific needs.

With the principle of “Quality Parts,Customers Priority,Honest Operation,and Considerate Service”,our business mainly focus on the distribution of electronic components. Line cards we deal with include Microchip,ALPS,ROHM,Xilinx,Pulse,ON,Everlight and Freescale. Main products comprise IC,Modules,Potentiometer,IC Socket,Relay,Connector.Our parts cover such applications as commercial,industrial, and automotives areas.

We are looking forward to setting up business relationship with you and hope to provide you with the best service and solution. Let us make a better world for our industry!



Contact us

Tel: +86-755-8981 8866 Fax: +86-755-8427 6832

Email & Skype: info@chipsmall.com Web: www.chipsmall.com

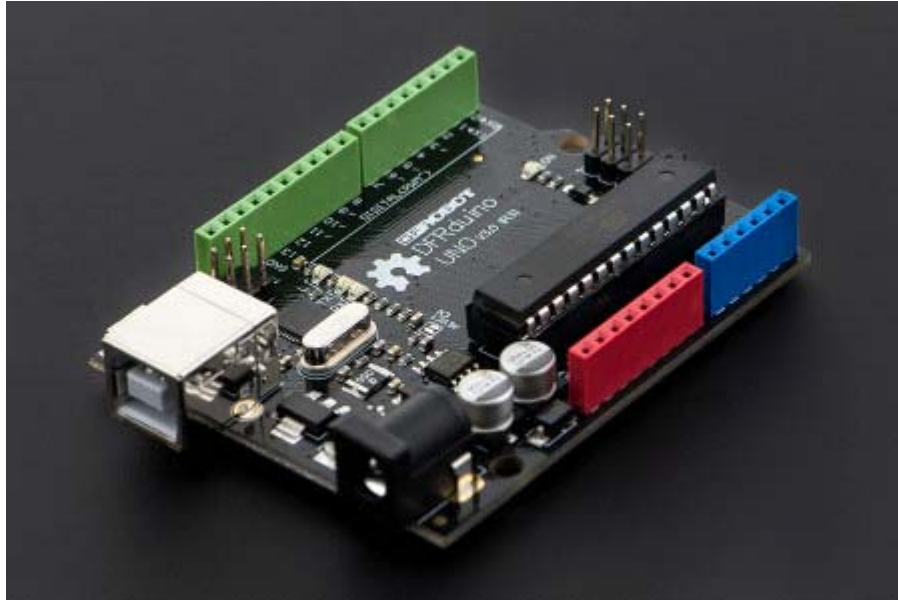
Address: A1208, Overseas Decoration Building, #122 Zhenhua RD., Futian, Shenzhen, China





DFRduino UNO R3 - Arduino Compatible

SKU:DFR0216



INTRODUCTION

DFRduino Uno V3.0 from DFRobot is a physical world computing board of small size for academics or development . It is a simple microcontroller board fully compatible with Arduino UNO R3 and Arduino IDE open-source development environment. This environment implements the Processing / Wiring language. Arduino can be used to develop stand-alone interactive objects or can be connected to software on your computer (e.g. Flash, Processing, MaxMSP). The open-source IDE can be downloaded for free (currently for Mac OS X, Windows, and Linux).

This board features the ATmega16U2 programmed as a USB-to-serial converter. An added bonus is that our DFRduino is still using the DIP package AVR Chip. You could remove it to update or reprogram the chip's firmware, or even to place it on a finished, more compact project. The cool thing about our new DFRduino microcontroller is that the headers use different colors to feature I/O ports of different types:

- **Red** for Power Section.
- **Blue** for Analog I/O.
- **Green** for Digital I/O.

These colors match our sensor cables. This makes it really easy to figure out where to connect sensors, or to identify which side is Analog (blue) or Digital (green).

The Arduino Uno is a microcontroller board based on the ATmega328. It has 14 digital input/output pins (of which 6 can be used as PWM outputs), 6 analog inputs, a 16 MHz crystal oscillator, a USB connection, a power jack, an ICSP header, and a reset button. It contains everything needed to support the microcontroller; simply connect it to a computer with a USB cable or power it with a AC-to-DC adapter or battery to get started.

This board added SDA and SCL pins that are near to the AREF pin and two other new pins placed near to the RESET pin, the IOREF that allow the shields to adapt to the voltage provided from the board. In future, shields will be compatible both with the board that use the AVR, which operate with 5V and with the Arduino Due that operate with 3.3V. The second one is a not connected pin, that is reserved for future purposes.

SPECIFICATION

- Microcontroller: ATmega328 (DIP Package)
- Operating Voltage: 5V
- Input Voltage (recommended): 7 ~ 12V
- Input Voltage (limits): 6 ~ 20V
- Digital I/O Pins: 14 (of which 6 provide PWM output)
- Analog Input Pins: 6
- DC Current per I/O Pin: 40 mA
- DC Current for 3.3V Pin: 50 mA
- Flash Memory: 32 KB of which 2KB used by bootloader
- SRAM: 2 KB (ATmega328)
- EEPROM: 1 KB (ATmega328)
- Clock Speed: 16 MHz
- Size: 75 x54 x15 mm (2.95 x2.13 x0.59")
- Environment Friendly: Rohs Compliance

SHIPPING LIST

- DFRduino Uno V3.0 x1