



Chipsmall Limited consists of a professional team with an average of over 10 year of expertise in the distribution of electronic components. Based in Hongkong, we have already established firm and mutual-benefit business relationships with customers from,Europe,America and south Asia,supplying obsolete and hard-to-find components to meet their specific needs.

With the principle of “Quality Parts,Customers Priority,Honest Operation,and Considerate Service”,our business mainly focus on the distribution of electronic components. Line cards we deal with include Microchip,ALPS,ROHM,Xilinx,Pulse,ON,Everlight and Freescale. Main products comprise IC,Modules,Potentiometer,IC Socket,Relay,Connector.Our parts cover such applications as commercial,industrial, and automotives areas.

We are looking forward to setting up business relationship with you and hope to provide you with the best service and solution. Let us make a better world for our industry!



Contact us

Tel: +86-755-8981 8866 Fax: +86-755-8427 6832

Email & Skype: info@chipsmall.com Web: www.chipsmall.com

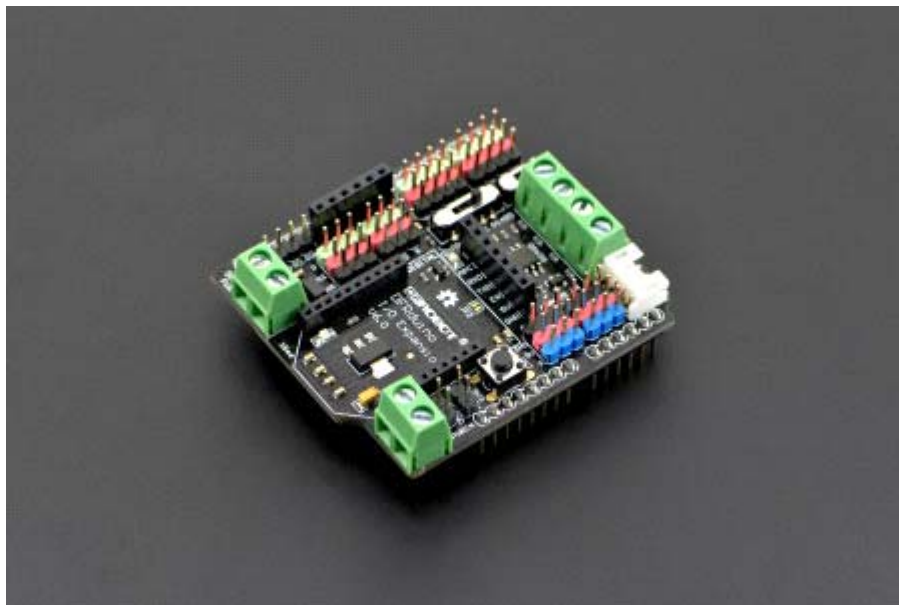
Address: A1208, Overseas Decoration Building, #122 Zhenhua RD., Futian, Shenzhen, China





Gravity: RS485 IO Expansion Shield for Arduino

SKU:DFR0219



INTRODUCTION

Our IO expansion board is evolving, the RS485 IO Expansion Shield is now supporting Xbee and has colour coded pin header. It combines our popular Xbee shield with IO expansion shield.

It even supports SD module card which provides the ultimate functional expansion for Arduino so far. As its predecessor, it supports RS485, APC220 Radio Communication Module, Bluetooth , Xbee communication, servo control.

SPECIFICATION

- Support Seperate Servo Power Supply
- Support RS485
- Support Xbee (Xbee pro)
- Support Bluetooth
- Support APC220
- Support SD card read/write
- Support URM04 (RS485 Ultrasonic Sensor)

SHIPPING LIST

- RS485 IO Expansion Shield for Arduino x1