



Chipsmall Limited consists of a professional team with an average of over 10 year of expertise in the distribution of electronic components. Based in Hongkong, we have already established firm and mutual-benefit business relationships with customers from,Europe,America and south Asia,supplying obsolete and hard-to-find components to meet their specific needs.

With the principle of “Quality Parts,Customers Priority,Honest Operation,and Considerate Service”,our business mainly focus on the distribution of electronic components. Line cards we deal with include Microchip,ALPS,ROHM,Xilinx,Pulse,ON,Everlight and Freescale. Main products comprise IC,Modules,Potentiometer,IC Socket,Relay,Connector.Our parts cover such applications as commercial,industrial, and automotives areas.

We are looking forward to setting up business relationship with you and hope to provide you with the best service and solution. Let us make a better world for our industry!



Contact us

Tel: +86-755-8981 8866 Fax: +86-755-8427 6832

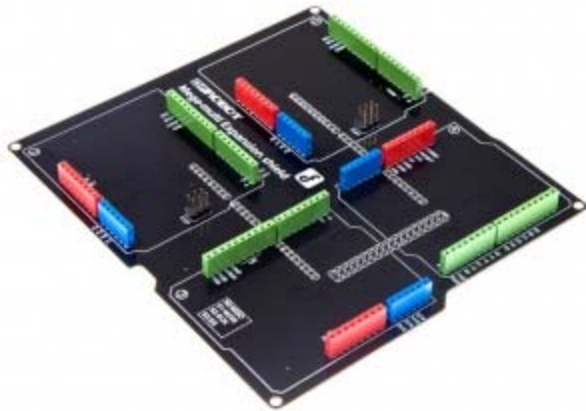
Email & Skype: info@chipsmall.com Web: www.chipsmall.com

Address: A1208, Overseas Decoration Building, #122 Zhenhua RD., Futian, Shenzhen, China





Mega Multi-Expansion shield SKU:DFR0256



Contents

- [1 Introduction](#)
- [2 Specification](#)
- [3 Pinout](#)
- [4 Application](#)

Introduction

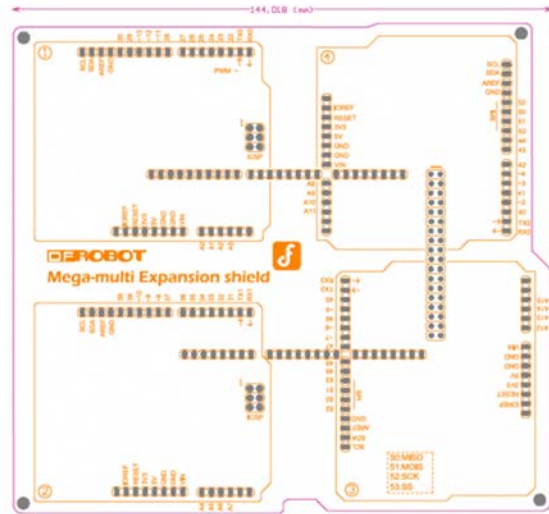
Bothered with the conflict of I/O pins when using shields with the Mega board during a project? Find it hard to take good advantage of the mega I/O pins? Try the Mega I/O multi-expansion shield to help solving the problem.

Mega I/O multi-expansion shield means that you can plug 4 different shields at same time. All I/O pins of the Mega board are expanded so that you can plug 4 shields at most, and worry not any more about the I/O conflict. Whatsmore, it makes your project clean & tidy with the cables be arranged in order . Expand your project idea with Mega I/O multi-expansion shield

Specification

- Compatible with Mega1280/2560/ADK
- Support 4 shields
- Size:14.4x13cm

Pinout

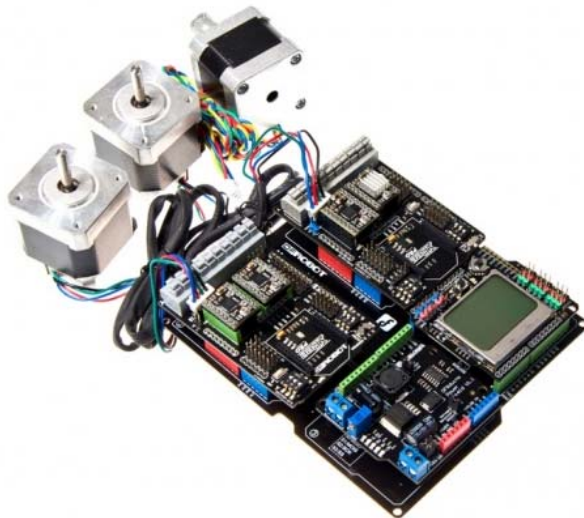


Pinout

Application

Here is some example for reference
A drafting instrument or a 3D printer

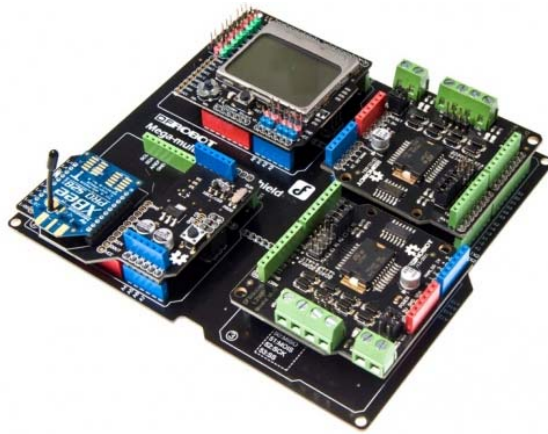
1. [A mega board \(1280/2560/ADK\)](#)
2. [Dual Bipolar Stepper Motor Shield for Arduino \(A4988\)](#)
3. [LCD12864 Shield for Arduino](#)
4. [A Power Shield \(Arduino Compatible\)](#)
5. [A mega multi-expansion shield](#)



A drafting instrument or a 3D printer

A 4WD robotic platform

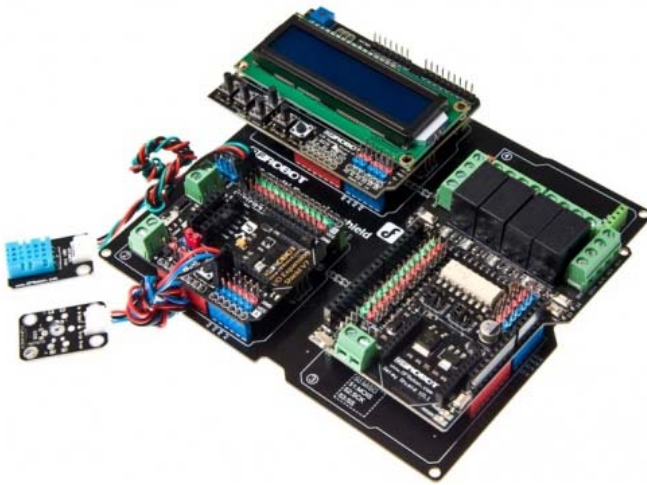
1. A mega board (1280/2560/ADK)
2. 2A Motor Shield For Arduino x2
3. A Graphic LCD4884 Shield For Arduino
4. A Xbee Shield For Arduino
5. A mega multi-expansion shield



A 4WD robotic platform

A simple smart home care robot

1. A mega board (1280/2560/ADK)
2. A LCD Keypad Shield For Arduino
3. DFRduino Ethernet Shield (Support Mega and Micro SD)
4. A Relay Shield for Arduino
5. A mega multi-expansion shield
6. A light sensor and a humidity & temperature sensor



A simple smart home care robot