



Chipsmall Limited consists of a professional team with an average of over 10 year of expertise in the distribution of electronic components. Based in Hongkong, we have already established firm and mutual-benefit business relationships with customers from,Europe,America and south Asia,supplying obsolete and hard-to-find components to meet their specific needs.

With the principle of “Quality Parts,Customers Priority,Honest Operation,and Considerate Service”,our business mainly focus on the distribution of electronic components. Line cards we deal with include Microchip,ALPS,ROHM,Xilinx,Pulse,ON,Everlight and Freescale. Main products comprise IC,Modules,Potentiometer,IC Socket,Relay,Connector.Our parts cover such applications as commercial,industrial, and automotives areas.

We are looking forward to setting up business relationship with you and hope to provide you with the best service and solution. Let us make a better world for our industry!



## Contact us

Tel: +86-755-8981 8866 Fax: +86-755-8427 6832

Email & Skype: [info@chipsmall.com](mailto:info@chipsmall.com) Web: [www.chipsmall.com](http://www.chipsmall.com)

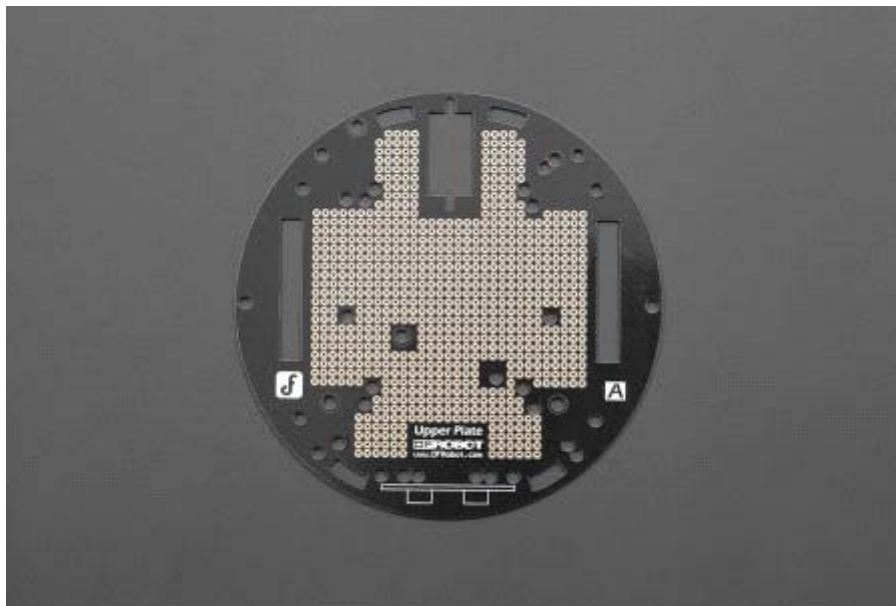
Address: A1208, Overseas Decoration Building, #122 Zhenhua RD., Futian, Shenzhen, China





# Upper Deck for MiniQ

SKU:DFR0310



## INTRODUCTION

Time to upgrade! This is a upper deck PCB for the 2WD MiniQ Robot Chassis. It is compatible with 9g micro servo and URM ultrasonic mounting bracket. With this upper deck you can upgrade the MiniQ with more sensors, and carry more duties - more possibilities, much more fun.

The leaf pads on the surface make it an ideal on-the-go prototyping board, and it is stackable. You can not only solder DIP components but also solder SMD components with this upper deck.

## **SPECIFICATION**

- Compatible with Romeo V1.1 & Romeo V2
- Size: 12.2 x 12.2 cm(4.8x4.8")
- PCB Surface: immersion gold

## **SHIPPING LIST**

- Upper Deck for MiniQ x1