



Chipsmall Limited consists of a professional team with an average of over 10 year of expertise in the distribution of electronic components. Based in Hongkong, we have already established firm and mutual-benefit business relationships with customers from,Europe,America and south Asia,supplying obsolete and hard-to-find components to meet their specific needs.

With the principle of “Quality Parts,Customers Priority,Honest Operation,and Considerate Service”,our business mainly focus on the distribution of electronic components. Line cards we deal with include Microchip,ALPS,ROHM,Xilinx,Pulse,ON,Everlight and Freescale. Main products comprise IC,Modules,Potentiometer,IC Socket,Relay,Connector.Our parts cover such applications as commercial,industrial, and automotives areas.

We are looking forward to setting up business relationship with you and hope to provide you with the best service and solution. Let us make a better world for our industry!



## Contact us

Tel: +86-755-8981 8866 Fax: +86-755-8427 6832

Email & Skype: info@chipsmall.com Web: www.chipsmall.com

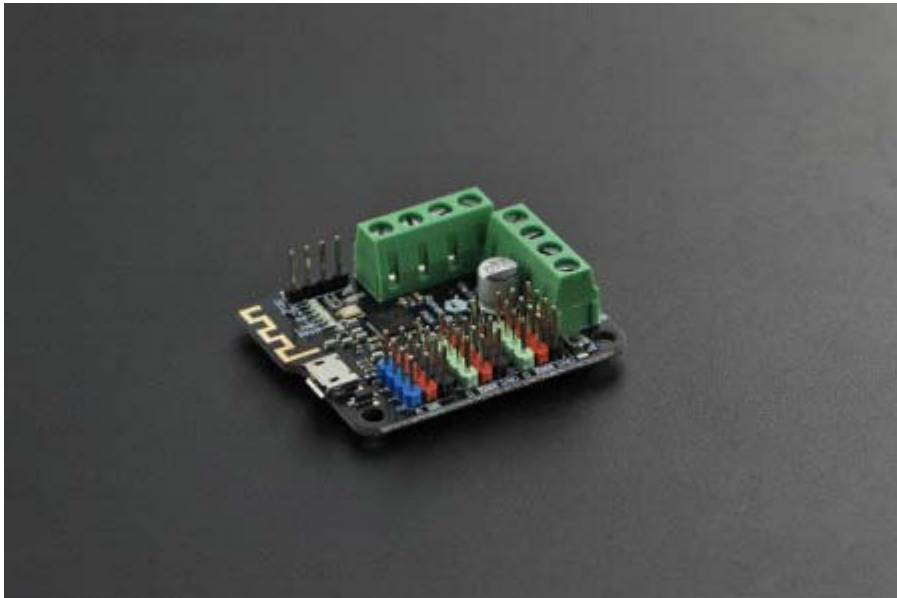
Address: A1208, Overseas Decoration Building, #122 Zhenhua RD., Futian, Shenzhen, China





## Romeo BLE mini - Small Arduino Robot Control Board with Bluetooth 4.0

SKU:DFR0351



### INTRODUCTION

Romeo BLE mini is a small Arduino compatible robot control board with motor driver and bluetooth 4.0. It benefits from the Arduino open source platform, which includes thousands of open source codes. Its integrated 2 way DC motor driver allows the project to be started immediately without any additional motor driver shield.

As a new member of Romeo family, Romeo BLE mini is designed for robot applications, it comes with various features such as Bluetooth communication, wireless programming and smartphone controlling. Say goodbye to the messy cable and plugging/unplugging USB port; it is all in wireless now!

Romeo BLE mini inherits most features from Bluetooth 4.0 and Romeo microcontroller. The power regulator will auto-switch the power resource when you connect USB and External power, which ensures system's working-stability.

## **SPECIFICATION**

- On-board BLE chip: TI CC2540
- Transmission range: <30m
- Easy to use BLE firmware updating
- Wireless Programming Via BLE
- Support Bluetooth HID
- Support AT command to config the BLE
- Support the master-slave machine switch
- Transparent communication through Serial
- Microcontroller: Atmega328p
- Bootloader: Arduino UNO
- 8 Digital I/O ports
- 2 PWM Outputs(Pin11,Pin10)
- 4 10-bit analog input ports
- USB port
- Auto sensing/switching external power input
- TTL I2C ICSP interfaces
- Two way H-bridged Motor Driver with 1.5A maximum current (each one)
- Size: 45x38.5mm(1.77x1.52")

## **SHIPPING LIST**

- Romeo BLE mini x1