



Chipsmall Limited consists of a professional team with an average of over 10 year of expertise in the distribution of electronic components. Based in Hongkong, we have already established firm and mutual-benefit business relationships with customers from,Europe,America and south Asia,supplying obsolete and hard-to-find components to meet their specific needs.

With the principle of “Quality Parts,Customers Priority,Honest Operation,and Considerate Service”,our business mainly focus on the distribution of electronic components. Line cards we deal with include Microchip,ALPS,ROHM,Xilinx,Pulse,ON,Everlight and Freescale. Main products comprise IC,Modules,Potentiometer,IC Socket,Relay,Connector.Our parts cover such applications as commercial,industrial, and automotives areas.

We are looking forward to setting up business relationship with you and hope to provide you with the best service and solution. Let us make a better world for our industry!



## Contact us

Tel: +86-755-8981 8866 Fax: +86-755-8427 6832

Email & Skype: info@chipsmall.com Web: www.chipsmall.com

Address: A1208, Overseas Decoration Building, #122 Zhenhua RD., Futian, Shenzhen, China





# IO Expansion Shield for Bluno M3 SKU:DFR0371



## Contents

- [1 Introduction](#)
- [2 Specification](#)
- [3 Board Overview](#)
- [4 Interface Reference](#)
  - [4.1 5V-supported Pins](#)
  - [4.2 Indicator LED "L"](#)
  - [4.3 Color-coded 3-Pin Interface](#)
  - [4.4 USART and I2C Interface](#)
  - [4.5 3.3V/5V operating voltage switch](#)
  - [4.6 External Power port](#)
  - [4.7 Servo power port \(5~12V\)](#)
- [5 FAQ](#)

## Introduction

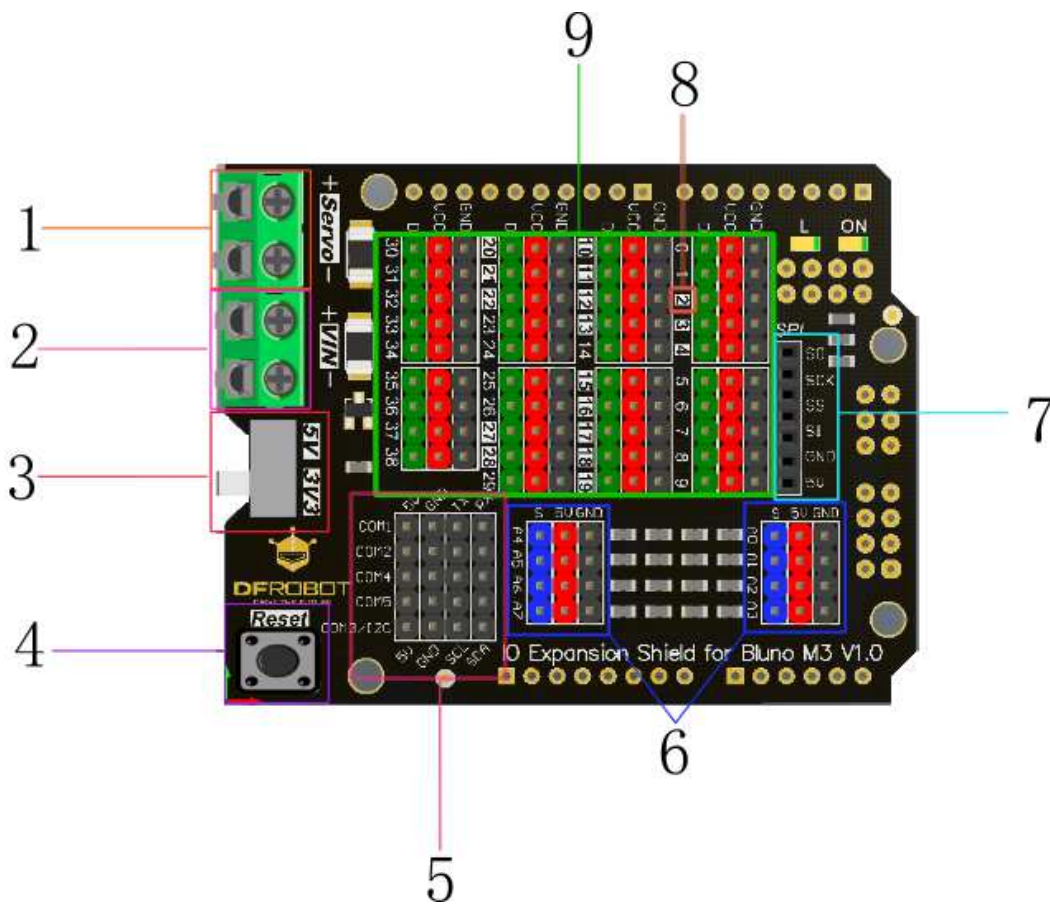
Say goodbye to messy cables! This IO shield is a powerful expansion shield for the Bluno M3. The breakouts for digital pins range from D0 to D38, including 5 UARTS, 8 PWM pins and 8 analog pins. The IO Expansion shield uses a convenient color coded 3 pin format for signal, voltage and ground that is useful if used with a large range of devices. The IO expansion shield also integrates an external power connector for servos - if you need to power a large array of servos, use the screw terminals to connect your power supply and drive them directly from your Bluno M3. It will switch to the right power source automatically. An intelligent power regulator allows you to connect a battery

and USB cable simultaneously, and an on-board voltage switch makes it easy to change the output voltage, making 3.3V or 5V sensors compatible.

## Specification

- Interface:
  - 39 GPIO pins with color-coded headers
  - 8 PWM pins
  - 8 Analog Input pins
  - 5 UARTS
  - 1 I2C/IIC
  - 1 SPI
  - External power connector for servos
  - 3.3V/5V power switch
- Dimensions: 69mm \* 54mm

## Board Overview



Num.	Name	Description
1	Servo Power Port	5-12V
2	External Power Port	7-12V
3	3.3V/5V Operating Voltage Switch	Select output voltage
4	Reset Button	
5	UARTS and I2C	
6	Analog Input Ports	Black: GND; Red: 5V; Blue: Analog Input pins (0~7)
7	SPI	
8	I/O Voltage Instruction	Silk-Screen: White background: supports 5V; Black background supports 3.3V only
9	Digital I/O ports	Black: GND; Red: 5V; Green: Digital I/O pins (0~38)

## Interface Reference

### 5V-supported Pins

There are 17 5V-supported pins on the shield.

- Digital I/O pins with white background support 5V power input
- Digital I/O pins with black background support 3.3V power input only, be careful!

### Indicator LED “L”

An on-board LED is connecting D13 digital I/O pin.

### Color-coded 3-Pin Interface

Green: Digital Signal Blue: Analog Signal Red: VCC Black: GND There are two rows pin headers beside the signal pin headers. They are arranged in regular sequence as Signal/VCC/GND, which is compatible with sensor pins order. All Red pins and Black pins are linked respectively. ”Note: Since there are a lot of 5V signal analog sensors that have an operating voltage that is higher than Bluno’s operating voltage, we have added bleeder circuits on the shield analog section. They can convert the voltage signal from 0~5V to 0~3.3V one and protect micro controller.”

### USART and I2C Interface

The shield provides 5 UARTS and 1 I2C interface. Since COM3 and default I2C interface use the same I/O pins, they can’t work simultaneously. You can redefine the I2C pins to avoid this conflict. Refer to [Bluno Me reference manual—I2C](#)

### 3.3V/5V operating voltage switch

The shield includes a voltage hardware setting through a switch to allow compatibility with a bigger range sensors and modules. It can change the color code VCC pins output voltage to 3.3V or 5V.

### External Power port

There is an external power port on the shield, which connecting to the M3 on-board external power port. The input voltage could be 7~12V. And when the board is connected to the USB and External power simultaneously, the power resource will change to the external automatically

### Servo power port (5~12V)

Servo power port A external power connector for servos, as in other products of this family. If you need to power a large array of servos, use the screw terminals to connect your power supply and just drive it directly from your M3 Servo power port is only connecting to the color-code pin headers, it won't power the MCU. When you power the board with USB or external power port, and if you connect a power resource (>5V) to the servo power port, color-code VCC pin headers will get power from Servo power port automatically.

### FAQ

There are no questions about this product yet, if you have any problems or suggestions, you are welcome to email us or post on our forum! Thank you!

If you have any questions or cool ideas to share, please visit [DFRobot Forum](#)