



Chipsmall Limited consists of a professional team with an average of over 10 year of expertise in the distribution of electronic components. Based in Hongkong, we have already established firm and mutual-benefit business relationships with customers from,Europe,America and south Asia,supplying obsolete and hard-to-find components to meet their specific needs.

With the principle of “Quality Parts,Customers Priority,Honest Operation,and Considerate Service”,our business mainly focus on the distribution of electronic components. Line cards we deal with include Microchip,ALPS,ROHM,Xilinx,Pulse,ON,Everlight and Freescale. Main products comprise IC,Modules,Potentiometer,IC Socket,Relay,Connector.Our parts cover such applications as commercial,industrial, and automotives areas.

We are looking forward to setting up business relationship with you and hope to provide you with the best service and solution. Let us make a better world for our industry!



Contact us

Tel: +86-755-8981 8866 Fax: +86-755-8427 6832

Email & Skype: info@chipsmall.com Web: www.chipsmall.com

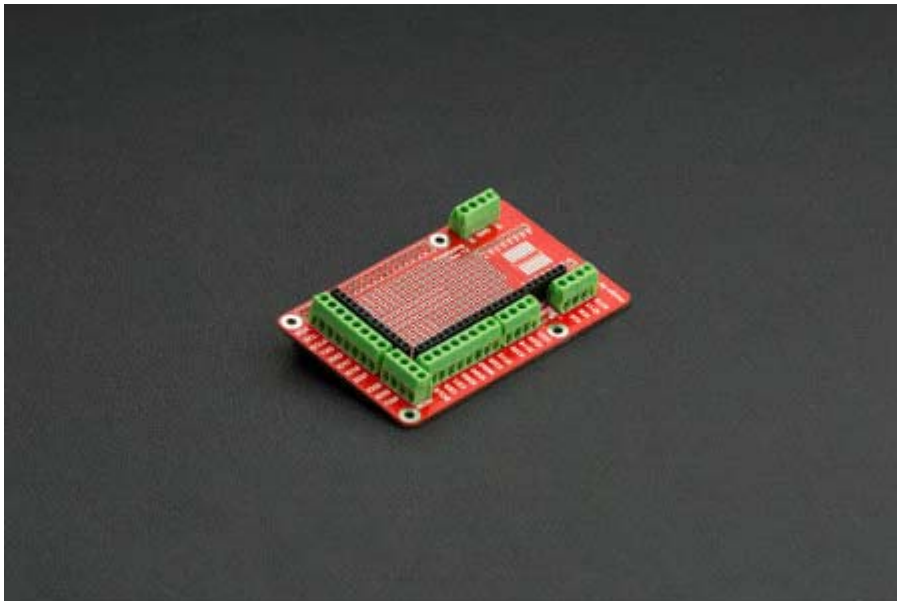
Address: A1208, Overseas Decoration Building, #122 Zhenhua RD., Futian, Shenzhen, China





Prototyping Shield for Raspberry Pi

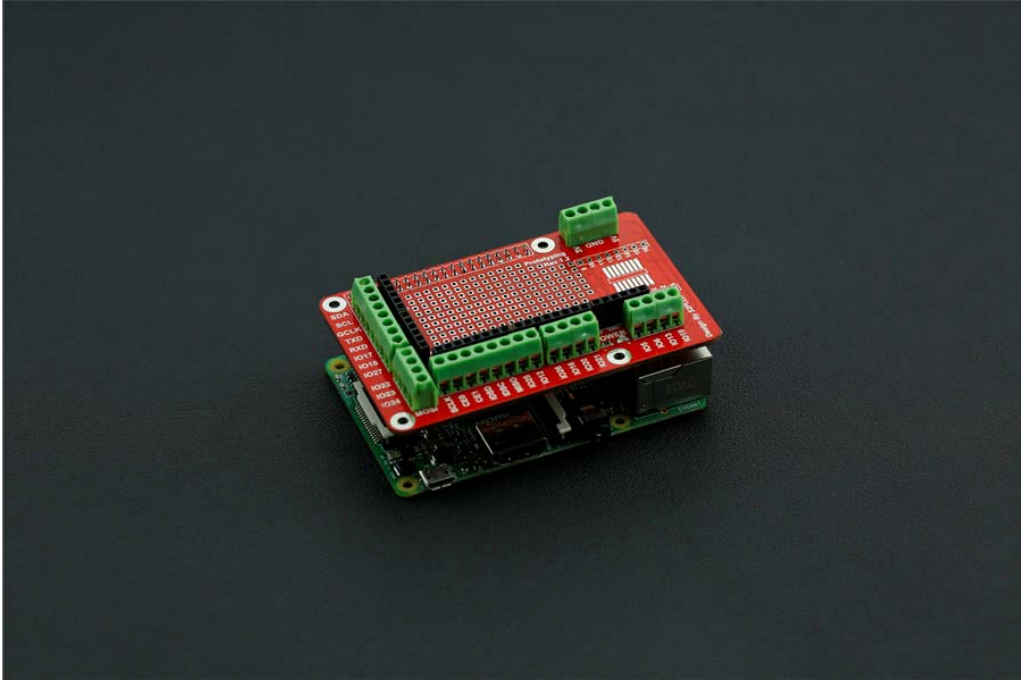
SKU:DFR0384



INTRODUCTION

This [Raspberry Pi](#) prototyping shield is compatible with models B+, 2B and newest 3B. It stacks on top of your Pi and is easily removable. The board uses dual headers on the underside to connect to the Pi's GPIO headers. The board itself a large prototyping area, half of which is breadboard-style (with horizontal and vertical rails), and half which is perfboard style (with copper pads) ready to be populated with DIP chips and through-hole components for a more permanent solution than a breadboard. There is also an available slot for 1 SOIC SMD chip.

Around the edges are female headers and 3.5mm screw-terminal blocks for breakout pins, making it easy to temporarily connect wires and LEDs. There is also a 4 block terminal block. Because of the Pi 2's higher profile, some header extensions are included so that the Pi's USB ports don't obstruct the shield when placed on top.



Note: Raspberry Pi and Shield can't be powered simultaneously.

FEATURES

- A big prototyping area, half of which is 'breadboard' style and half of which is 'perfboard' style so you can wire up DIP chips, sensors, and the like.
- Along the edges of the proto area, all the GPIO/I2C/SPI and power pins are broken out to 0.1" stips so you can easily connect to them.
- On the edges of the prototyping area, all of the breakout pins are also connected to labeled 3.5mm screw-terminal blocks. This makes it easy to semi-permanently wire in sensors, LEDs, etc.
- There's also a 4-block terminal block broken out to 0.1" pads for general non-GPIO wiring.
- A SOIC and a TSSOP surface mount chip breakout area, for those chips that dont come in DIP format.
- Comptiable EEPROM chip: AT24C08BN-SP25-T
- POWER LED indicator

SHIPPING LIST

- Prototyping Shield for Raspberry Pi x1