



Chipsmall Limited consists of a professional team with an average of over 10 year of expertise in the distribution of electronic components. Based in Hongkong, we have already established firm and mutual-benefit business relationships with customers from,Europe,America and south Asia,supplying obsolete and hard-to-find components to meet their specific needs.

With the principle of “Quality Parts,Customers Priority,Honest Operation,and Considerate Service”,our business mainly focus on the distribution of electronic components. Line cards we deal with include Microchip,ALPS,ROHM,Xilinx,Pulse,ON,Everlight and Freescale. Main products comprise IC,Modules,Potentiometer,IC Socket,Relay,Connector.Our parts cover such applications as commercial,industrial, and automotives areas.

We are looking forward to setting up business relationship with you and hope to provide you with the best service and solution. Let us make a better world for our industry!



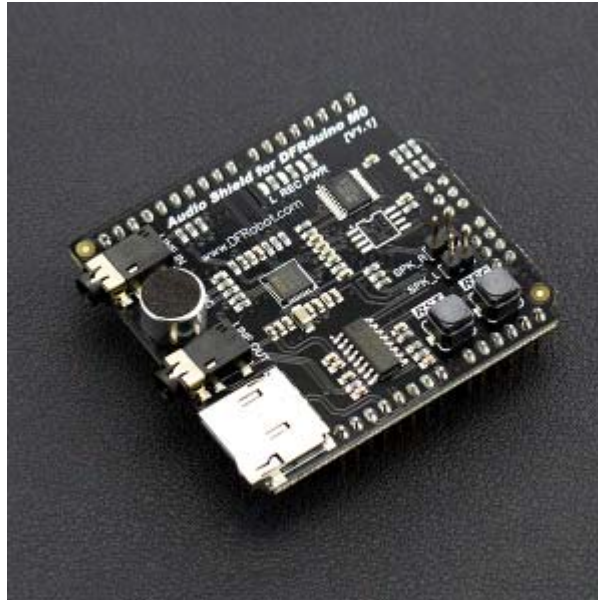
Contact us

Tel: +86-755-8981 8866 Fax: +86-755-8427 6832

Email & Skype: info@chipsmall.com Web: www.chipsmall.com

Address: A1208, Overseas Decoration Building, #122 Zhenhua RD., Futian, Shenzhen, China





Audio Shield For DFRduino M0

SKU: DFR0420

DFRduino M0 Audio Expansion Shield selects the latest full-featured WM8978 of Wolfson as the audio processor. It comes with HI-FI level digital signal processing kernel, supporting 3D surround-sound enhancement and 5 frequency bands balance which can improve the sound quality. With a programmable notch filter, it also can filter noise caused by current noise, etc.

Attributing to the plentiful hardware resource on DFRduino M0, we finally can transplant this HI-FI level codec chip to Arduino platform. Functions like dual channels playing, SD card storage, MONO recording and dual channels 3W PA (power amplification) are available even without serial port MP3 module. It is efficient in serial port resources, flexible in control and convenient to use.

DFRduino M0 Audio Expansion Shield adopts standard IIS interface, equipped with on-board MIC and 3.5mm audio jack, supporting external voice source input and output. It also has left and right channels speakers, which you can connect 3W trumpets.



NOTE: DFRduino M0 Audio Expansion Shield uses IIS interface and it is only compatible with DFRduino M0 and Bluno M0 microcontrollers, not support common Arduino microcontrollers.

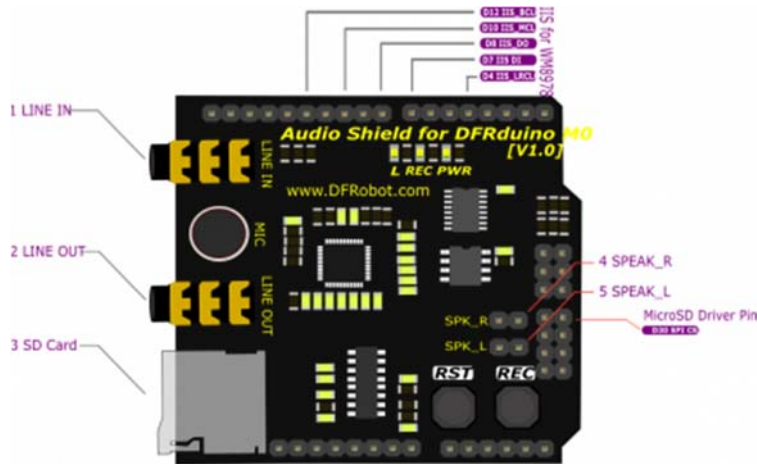
Feature

- WM8978 professional Hi-Fi codec chip
- Standard IIS interface
- Dual 3W amplifier
- Support onboard MIC, DC3.5 MIC Input

Specification

- Operating Voltage: 5V
- Maximum Operating Current: 2A
- Audio Format: wav file
- DFRduino M0 shield package
- Input Interface: 3.5mm MIC & On-board MIC
- Output Interface: 3.5MIC headphone & XH2.54 Speaker pins
- Dimension: 55mm * 53mm/2.16" * 2.08"
- Weight 26g

Board Overview



Audio Shield For DFRduino M0 Pin Out

Num	Label	Description
1	Linein	3.5mm Microphone
2	Lineout	3.5mm headset
3	Micro-SD	Micro-SD
4	Speaker_L	Left Speaker
5	Speaker_R	Right Speaker

Tutorial

In this section, we'll display 2 examples: Play WAV music & Record your voice.

Requirements

- **Hardware**
 - DFRduino M0 Mainboard x1
 - Audio Shield for DFRduino M0 x1
 - 3.5mm headphone or 3W Speaker
 - MicroSD card with FAT format (Currently, exFAT is not supported. Please use FAT16 or FAT32 for formatting).
- **Software**
 - Arduino IDE (Version requirements: V1.6+), [Click to Download Arduino IDE from Arduino®](#)

<https://www.arduino.cc/en/Main/Software%7C>

Sample Code 1 — Play WAV File

```
#include <SPI.h>
#include <Wire.h>
#include <SD.h>
#include <WAV.h>

// set up variables using the SD utility library functions:
Sd2Card card;

///< assign sd card chipselect pin
const int chipSelect = 30;

void setup()
{
    // Open serial communications and wait for port to open:
    Serial.begin(115200);
    while (!Serial) {
        ; // wait for serial port to connect. Needed for Leonardo only
    }
}
```

```

}

while(1){
    Serial.print("\nInitializing SD card...");

    // we'll use the initialization code from the utility libraries
    // since we're just testing if the card is working!
    if (!card.init(SPI_HALF_SPEED, chipSelect)) {
        Serial.println("initialization failed. Things to check:");
        Serial.println("* is a card inserted?");
        Serial.println("* is your wiring correct?");
        Serial.println("* did you change the chipSelect pin to match your
shield or module?");
        delay(2000);
        continue;
    } else {
        Serial.println("Wiring is correct and a card is present.");
        if (!SD.begin(chipSelect)) {
            Serial.println("Card failed, or not present");
            delay(2000);
            continue;
        }
        break;
    }
}

void loop()
{
    int ret;
    //assign music file and trigger transport dma
    wav.play("test.wav");
    do{
        //We must continue to decode to provide data to the player
        ret = wav.decode();

```

```
        //user code

    }while(ret == WAV_DECODING);

    while(1);

}
```

Operating Steps

1. Leave your wav file on the root of Micro-SD card. (Named with "test.wav") ,
2. Insert your SD card into the SD card slot. Note: SD storage format must be FAT
3. Plug in speakers or headphones
4. Upload the sample code, open the serial port monitor, and it will play themusic.

Sample Code 2 ——Record

```
#include <SPI.h>
#include <Wire.h>
#include <SD.h>
#include <WAV.h>

// set up variables using the SD utility library functions:
Sd2Card card;

const int chipSelect = 30; ///< assign sd card chipselect pin

void setup()
{
    // Open serial communications and wait for port to open:
    Serial.begin(115200);
    while (!Serial) {
        ; // wait for serial port to connect. Needed for Leonardo only
    }
}
```

```

while(1){
    Serial.print("\nInitializing SD card...");

    // we'll use the initialization code from the utility libraries
    // since we're just testing if the card is working!
    if (!card.init(SPI_HALF_SPEED, chipSelect)) {
        Serial.println("initialization failed. Things to check:");

        Serial.println("* is a card inserted?");
        Serial.println("* is your wiring correct?");
        Serial.println("* did you change the chipSelect pin to
match your shield or module?");
        delay(2000);
        continue;
    } else {
        Serial.println("Wiring is correct and a card is present.");

        if (!SD.begin(chipSelect)) {
            Serial.println("Card failed, or not present");
            delay(2000);
            continue;
        }
        break;
    }
}

void loop()
{
    int ret;
    ret = wav.record("rec.wav");
    unsigned int start = millis();
    while(ret == WAV_ENCODING){
        ret = wav.encode();
    }
}

```

```
        if(millis() - start > 5000){
            wav.stop();
            ret = WAV_ENCODE_END;
        }
    };
    while(1);
}
```

Expected Results

Record the voice for 5 seconds.

FAQ

For any questions, advice or cool ideas to share, please visit the [**DFRobot Forum**](#).