



Chipsmall Limited consists of a professional team with an average of over 10 year of expertise in the distribution of electronic components. Based in Hongkong, we have already established firm and mutual-benefit business relationships with customers from,Europe,America and south Asia,supplying obsolete and hard-to-find components to meet their specific needs.

With the principle of “Quality Parts,Customers Priority,Honest Operation,and Considerate Service”,our business mainly focus on the distribution of electronic components. Line cards we deal with include Microchip,ALPS,ROHM,Xilinx,Pulse,ON,Everlight and Freescale. Main products comprise IC,Modules,Potentiometer,IC Socket,Relay,Connector.Our parts cover such applications as commercial,industrial, and automotives areas.

We are looking forward to setting up business relationship with you and hope to provide you with the best service and solution. Let us make a better world for our industry!



Contact us

Tel: +86-755-8981 8866 Fax: +86-755-8427 6832

Email & Skype: info@chipsmall.com Web: www.chipsmall.com

Address: A1208, Overseas Decoration Building, #122 Zhenhua RD., Futian, Shenzhen, China





Gravity: DC Micro Metal Gear Motor w/Driver - 50:1

SKU:DFR0429

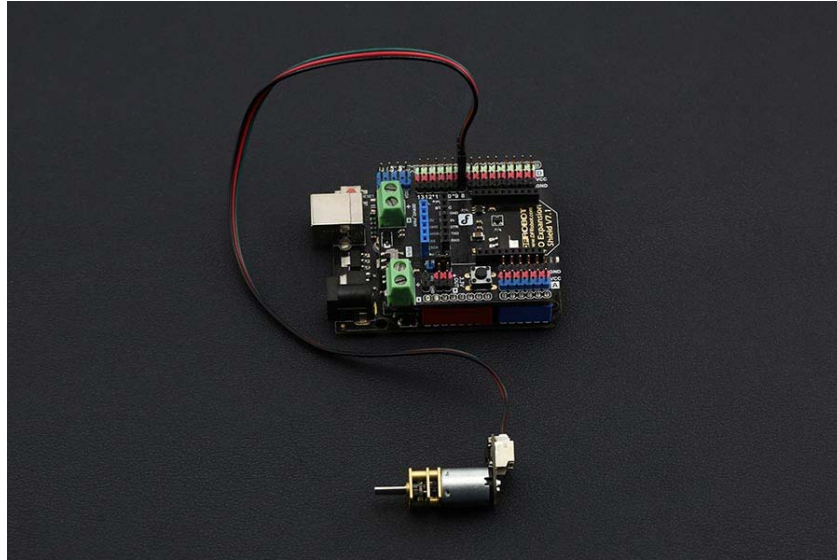


INTRODUCTION

An ordinary DC motor requires an H Bridge to work with a microcontroller such as an UNO. For newcomers to electronics, the process of finding the right motor driver, connecting it to the MCU and learning the relevant electronic theory can be confusing and frustrating when you just need something to work quickly. We hope that using the DC Micro Metal gear motor changes this.

The new micro DC geared motor is easy to operate - using the DFRobot "Gravity" interface, you are able to control the motor using only one control signal. Easily implement forward/reverse control and speed control via PWM. This motor also combines the features of a DC motor and 360 degree servo. We have also increased the stop range and reduced standby power consumption, so the current draw is less than 1mA without signal control. The Arduino Servo library supports up to 12 motors on most Arduino boards and 48 on the Arduino Mega. More function could be found on Arduino Servo page. Ideal for DIY projects!
<https://www.arduino.cc/en/Reference/Servo>

NOTE: The embedded control chip will consume a small amount of the input voltage, therefore the motor voltage will be slightly reduced. The motor speed will also be slightly slower than the rated motor speed.



SPECIFICATION

- Operating voltage: 3.5V - 8V
- Reduction ratio: 50:1
- No load current: 40mA@6V (approx)
- Static current: < 1mA (no PWM control signal input)
- Interface: Gravity 3-Pin
- PPM signal resolution: 1us
- PPM signal pulse width range: 500us-2500us
- Clockwise pulse width range: 500us-1400us (500us speed maximum)
- Stop pulse width range: 1400us-1600us
- Anticlockwise pulse width range: 1600us-2500us (2500us speed maximum)
- PWM frequency: 500 Hz.

SHIPPING LIST

- DC Micro Metal Gear Motor w/Driver - 50:1 x1
- Gravity 3-Pin cable x1