



Chipsmall Limited consists of a professional team with an average of over 10 year of expertise in the distribution of electronic components. Based in Hongkong, we have already established firm and mutual-benefit business relationships with customers from,Europe,America and south Asia,supplying obsolete and hard-to-find components to meet their specific needs.

With the principle of "Quality Parts,Customers Priority,Honest Operation,and Considerate Service",our business mainly focus on the distribution of electronic components. Line cards we deal with include Microchip,ALPS,ROHM,Xilinx,Pulse,ON,Everlight and Freescale. Main products comprise IC,Modules,Potentiometer,IC Socket,Relay,Connector.Our parts cover such applications as commercial,industrial, and automotives areas.

We are looking forward to setting up business relationship with you and hope to provide you with the best service and solution. Let us make a better world for our industry!



Contact us

Tel: +86-755-8981 8866 Fax: +86-755-8427 6832

Email & Skype: info@chipsmall.com Web: www.chipsmall.com

Address: A1208, Overseas Decoration Building, #122 Zhenhua RD., Futian, Shenzhen, China



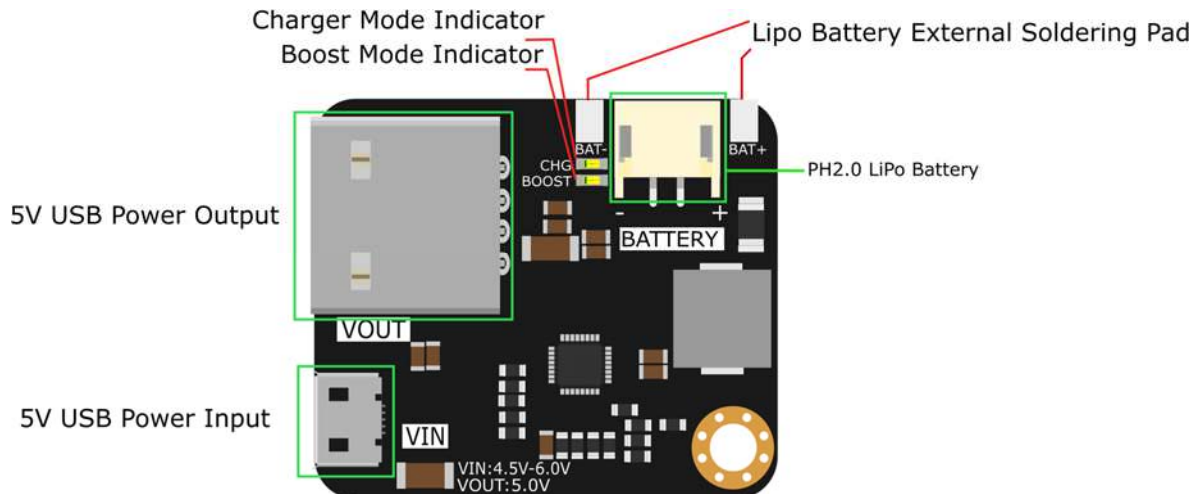
MP2636 Power Booster & Charger Module

SKU:DFR0446



INTRODUCTION

In many applications, we will use lithium batteries as our power solutions. In this kind of application, the most two important things are the power boost and battery charger. These two points are a prerequisite for the system. The traditional power boost and battery charge circuit are usually divided into two separate parts, the circuit will be relatively cumbersome to build.



The Monolithic Power Systems (MPS) MP2636 is highly-integrated, flexible switch-mode battery charger with system power path management, designed for single-cell Liion or Li-Polymer batteries used in a wide range of portable applications. It is really simple to use, once you plug a lipo battery, it will work like a power bank. When there is an external power supply from VIN, it will charge the battery automatically, and the CHG led will light up; when there is no external power, only battery on battery port, the Boost will be ON.

SPECIFICATION

- Charge mode input voltage (VIN): 4.5-6.0V
- Boost mode output voltage (VOUT): 5V
- Suitable for battery voltage: 4.2V (3.7V lithium battery full of 4.2V)
- Charge mode Maximum charge current: 2.5A
- Boost mode Maximum output current: 2.5A
- Switching frequency: 600KHz
- Charging mode efficiency:> 90%
- Boost mode efficiency:> 90%
- Support battery overcharge protection
- Temperature protection: more than 150 °C, automatic power failure
- Size: 35 * 30mm/ 1.38 * 1.18inches
- Weight: 12g

SHIPPING LIST

MP2636 Power Booster & Charger Module x1