



Chipsmall Limited consists of a professional team with an average of over 10 year of expertise in the distribution of electronic components. Based in Hongkong, we have already established firm and mutual-benefit business relationships with customers from,Europe,America and south Asia,supplying obsolete and hard-to-find components to meet their specific needs.

With the principle of “Quality Parts,Customers Priority,Honest Operation,and Considerate Service”,our business mainly focus on the distribution of electronic components. Line cards we deal with include Microchip,ALPS,ROHM,Xilinx,Pulse,ON,Everlight and Freescale. Main products comprise IC,Modules,Potentiometer,IC Socket,Relay,Connector.Our parts cover such applications as commercial,industrial, and automotives areas.

We are looking forward to setting up business relationship with you and hope to provide you with the best service and solution. Let us make a better world for our industry!



Contact us

Tel: +86-755-8981 8866 Fax: +86-755-8427 6832

Email & Skype: info@chipsmall.com Web: www.chipsmall.com

Address: A1208, Overseas Decoration Building, #122 Zhenhua RD., Futian, Shenzhen, China





LED String Lights (Warm White) SKU: DFR0448



Introduction

These LED string lights are composed of a series of LEDs that have a warm white glow. They can be used as decorations and for other interesting applications. Use them as outdoor string lights, string lights in your bedroom, on your patio or on a globe. There are many applications, what can you think of?



Note: Use the provided adapter to power the string to avoid risk of damage.

Specification

- Operating Voltage: 2.5 - 5 v (5V Recommended)
- LED Length: 4 meters / 40 LEDs
- Adapter Board Dimensions: 30 x 22 mm / 1.18 x 0.86 "

Board Overview



No.	Label	Description
1	Signal	Input Signal
2	VCC	Power +
3	GND	Power -

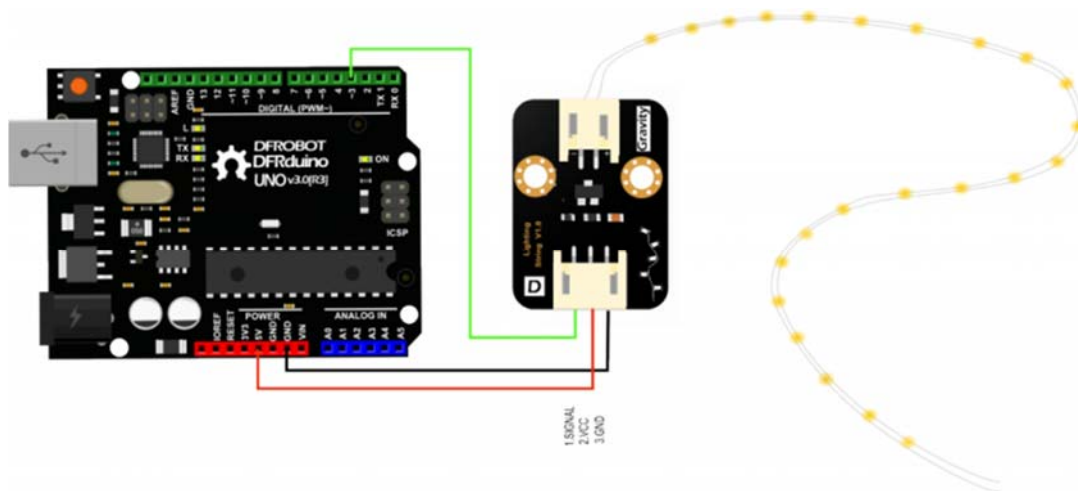
Tutorial

In this section, we'll tell you how to use the LED module

Requirements

- **Hardware**
 - DFRduino UNO (or similar) x 1
 - LED String x 1
 - M-M/F-M/F-F Jumper wires
- **Software**
 - Arduino IDE [Click to Download Arduino IDE from Arduino®](https://www.arduino.cc/en/Main/Software%7C)
<https://www.arduino.cc/en/Main/Software%7C>

Connection Diagram



Sample Code

```
1  /*****
2  * LED String Lights
3  * *****/
4  * Control a String Light to fade in and out
5
6  * @author Dongzi(1185787528@qq.com)
7  * @version V1.0
8  * @date 2016-5-26
9  * All above must be included in any redistribution
10 * *****/
11 int t;
12 #define Light_string 3
13 void setup() {
14
15   pinMode( Light_string, OUTPUT);
16 }
17 void loop() {
18
19   for(t=5;t<255;t++ ) // turn the Light string on (HIGH is the volta
ge level) little and little.
20   {
```

```
21    analogWrite( Light_string, t);
22    delay(10);
23 }
24
25 if(t>=255)          // turn the Light string off (HIGH is the volta
ge level) little and little.
26 {
27     for(t==255;t>5;t--)
28     {
29         analogWrite( Light_string, t);
30         delay(10);
31     }
32 }
33 }
```

FAQ

For any questions, advice or cool ideas to share, please visit the [DFRobot Forum](#).