



Chipsmall Limited consists of a professional team with an average of over 10 year of expertise in the distribution of electronic components. Based in Hongkong, we have already established firm and mutual-benefit business relationships with customers from,Europe,America and south Asia,supplying obsolete and hard-to-find components to meet their specific needs.

With the principle of “Quality Parts,Customers Priority,Honest Operation,and Considerate Service”,our business mainly focus on the distribution of electronic components. Line cards we deal with include Microchip,ALPS,ROHM,Xilinx,Pulse,ON,Everlight and Freescale. Main products comprise IC,Modules,Potentiometer,IC Socket,Relay,Connector.Our parts cover such applications as commercial,industrial, and automotives areas.

We are looking forward to setting up business relationship with you and hope to provide you with the best service and solution. Let us make a better world for our industry!



## Contact us

Tel: +86-755-8981 8866 Fax: +86-755-8427 6832

Email & Skype: info@chipsmall.com Web: www.chipsmall.com

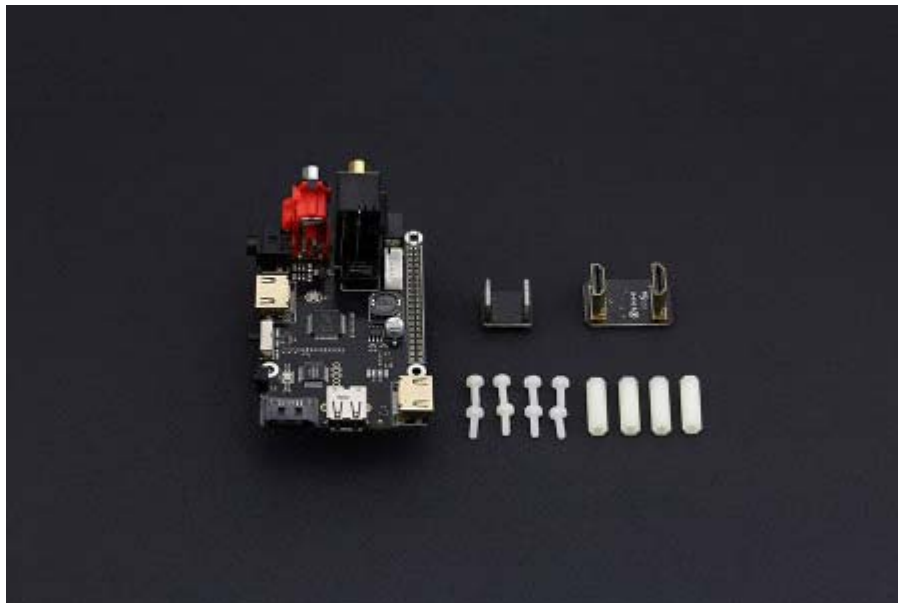
Address: A1208, Overseas Decoration Building, #122 Zhenhua RD., Futian, Shenzhen, China





# Expansion Shield x600 for Raspberry Pi B+/2B/3B

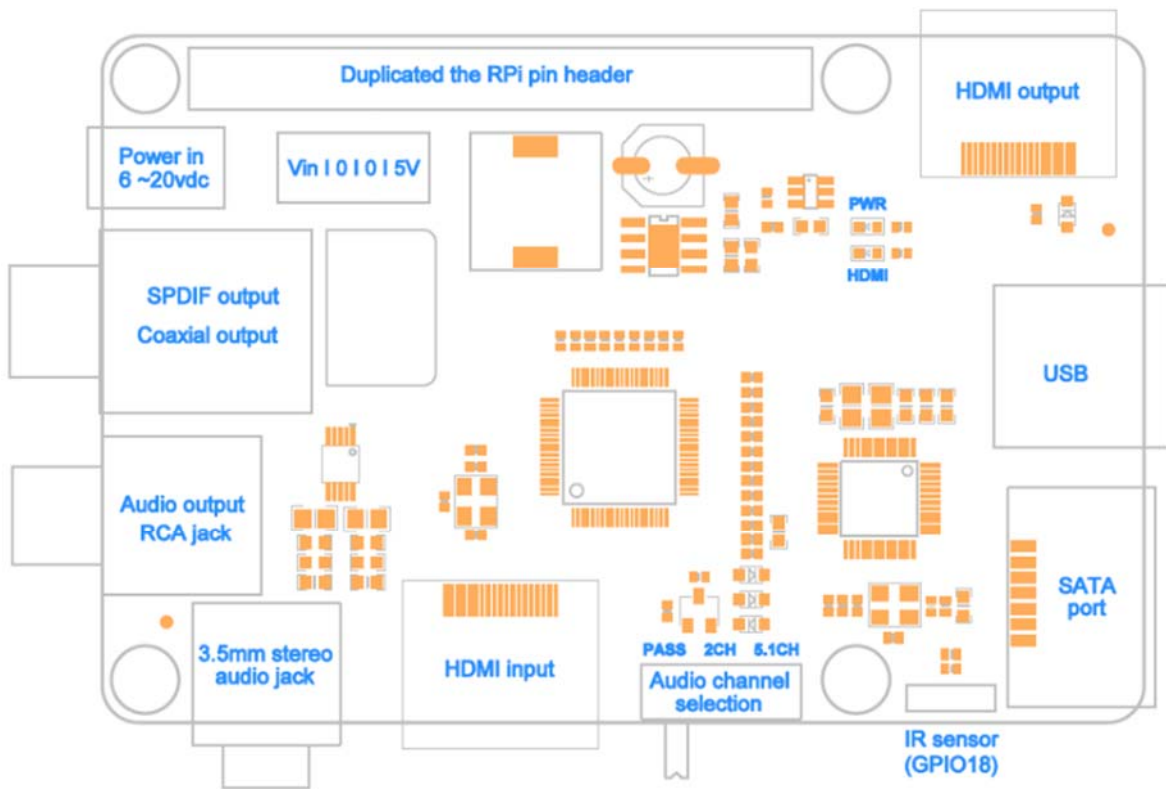
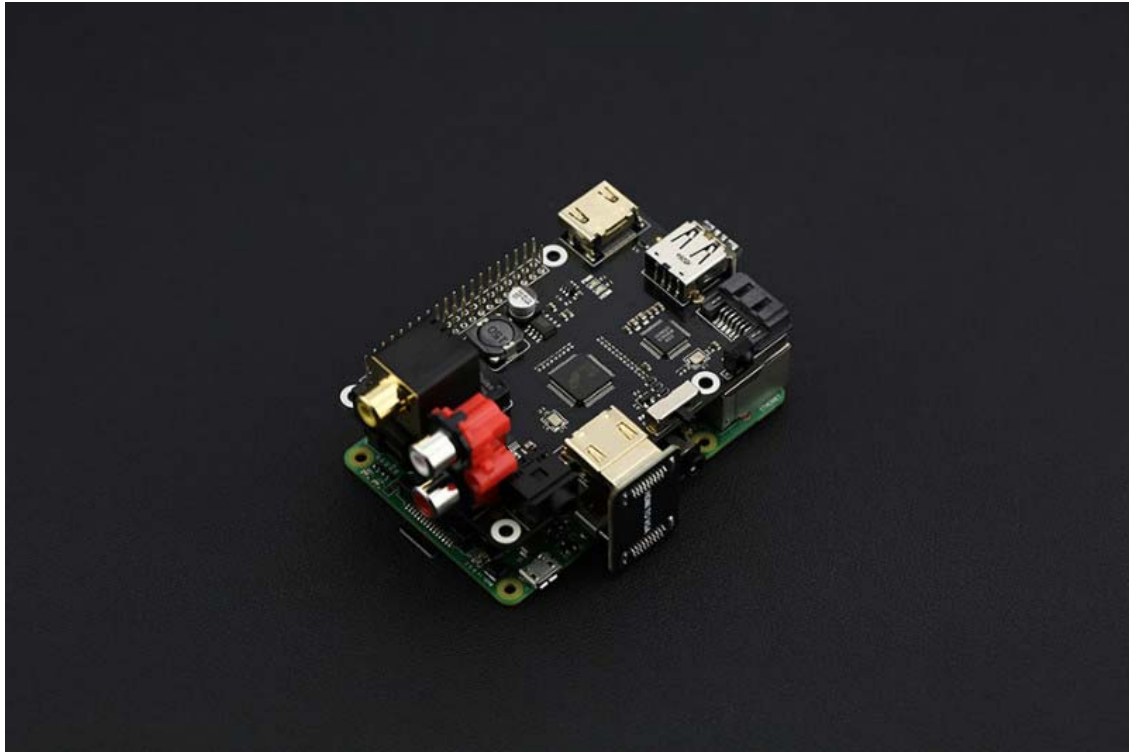
SKU:DFR0450



## INTRODUCTION

The X600 Expansion Shield is a highly cost-effective multimedia hat compatible with the Raspberry Pi Model B+, Raspberry Pi 2 Model B and newest Raspberry Pi 3 Model B. It uses an HDMI audio solution to give high-definition clear sound quality. It decodes and separates voices from HDMI signal, completely solving the poor quality problem with Raspberry Pi integrated sound card.

The hat supports digital audio 5.1 channel output and 2.0 channel analog audio output, supports Dolby digital AC-3, DTS, LPCM and other digital audio format outputs. Use your Raspberry Pi as a multimedia player, lossless audio player or a network radio. We recommend OS images such as Raspbian, Volumio, OSMC, PiMusicBox, etc.



Note: Raspberry Pi is not included in the box.



## SPECIFICATION

- Input Voltage
  - 6V to 20Vdc converted to 5V, 3A via step-down DC/DC converter to power the Raspberry Pi and SATA device
- Audio & Video
  - Allows you to extract audio signals from HDMI of your Raspberry Pi
  - Converts HDMI audio to digital optical or Coaxial or stereo RCA analog
  - The SPDIF optical or coaxial audio output supports all audio formats up to 5.1CH Dolby Digital 5.1CH / AC3 & DTS 5.1CH audio
  - Extracts digital 2CH PCM stereo audio signal from the HDMI input and convert it to 2CH analog stereo output through its RCA style L/R analog output or earphone jack
  - Provides the Best Flexibility through Three NEW Audio EDID Settings: Pass, 2CH and 5.1CH
  - Maintains surround format when converting to digital optical audio
  - Supports high definition input up to 1080p@ (24/60) Hz, output resolution follows input
  - Supports HDMI signal amplification and equalization output for repeater function
  - HDMI output supports all audio formats including more advanced Dolby Digital Plus, PCM5.1CH and beyond
- SATA
  - Allows you to connect SATA devices to your Raspberry Pi
- Wireless
  - Built in IR sensor (38KHz)
- Misc
  - Power output socket
  - Directly connected on top of the Raspberry Pi using the board GPIO header pins
  - Solderless and no wires required
  - Extra 40-pin header of the R-Pi in order to support existing expansion boards
  - Suitable for Raspberry Pi Model B+, Raspberry pi 2 Model B and Raspberry Pi 3 Model B NEW!
- Dimensions
  - 85 x 56mm (Same size as Raspberry Pi)

## SHIPPING LIST

- X600 expansion board x1
- Nylon spacers (M3 x 20mm) x4
- Nylon screws (M3 x 6mm) x8
- USB adapter x1
- HDMI adapter x1