



Chipsmall Limited consists of a professional team with an average of over 10 year of expertise in the distribution of electronic components. Based in Hongkong, we have already established firm and mutual-benefit business relationships with customers from,Europe,America and south Asia,supplying obsolete and hard-to-find components to meet their specific needs.

With the principle of “Quality Parts,Customers Priority,Honest Operation,and Considerate Service”,our business mainly focus on the distribution of electronic components. Line cards we deal with include Microchip,ALPS,ROHM,Xilinx,Pulse,ON,Everlight and Freescale. Main products comprise IC,Modules,Potentiometer,IC Socket,Relay,Connector.Our parts cover such applications as commercial,industrial, and automotives areas.

We are looking forward to setting up business relationship with you and hope to provide you with the best service and solution. Let us make a better world for our industry!



## Contact us

Tel: +86-755-8981 8866 Fax: +86-755-8427 6832

Email & Skype: info@chipsmall.com Web: www.chipsmall.com

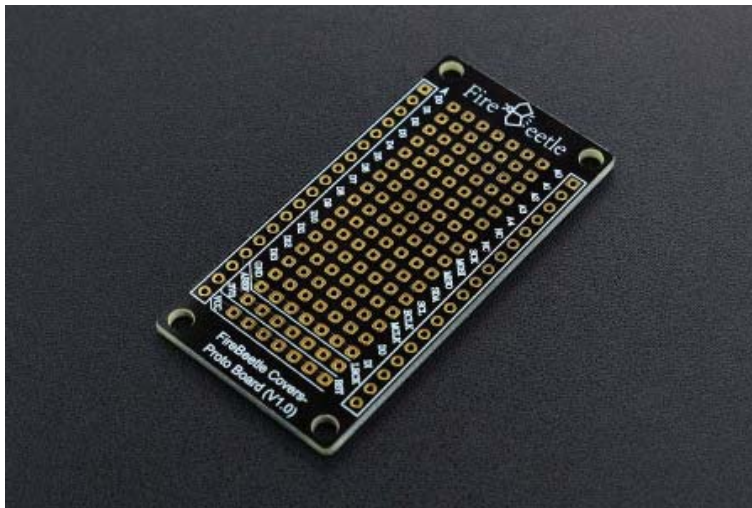
Address: A1208, Overseas Decoration Building, #122 Zhenhua RD., Futian, Shenzhen, China





# FireBeetle Covers-Proto Board

## SKU:DFR0481



### INTRODUCTION

DFRobot FireBeetle series is the low-power consumption micro-controller intentionally designed for Internet of Things (IoT). The series micro-controllers aims at IoT node of low-power consumption, attending to build the IoT hardware platform quickly and conveniently. There are three types of FireBeetle, containing Boards (main control), Covers (expansion boards) and related Accessories.

Proto Board is compatible with products of FireBeetle series. There are 14x7 general 2.54mm solder holes in the board of standard spacing. The prototyping boards connect to one master board with VCC, 3.3V and GND soldering pads. These features of Proto Board contribute to it an ideal vehicle for soldering any electronic component. Moreover, the ports compatible with other projects of FireBeetle makes it the best choice for overlay circuit prototypes.

## FEATURES

- Compatible with products in the DFRobot FireBeetle Series, plug and play
- Cost-Effective
- Small size, convenient to install

## SPECIFICATION

- 14×7 general 2.54mm soldering pad
- Dimension: 29.00×58.00mm/ 1.41×2.28 inches
- Weight: 18 g

## SHIPPING LIST

FireBeetle Covers-Proto Board x1  
18 pin-2.54mm pin x4  
18 pin-2.54mm long pin header x4

