



Chipsmall Limited consists of a professional team with an average of over 10 year of expertise in the distribution of electronic components. Based in Hongkong, we have already established firm and mutual-benefit business relationships with customers from,Europe,America and south Asia,supplying obsolete and hard-to-find components to meet their specific needs.

With the principle of “Quality Parts,Customers Priority,Honest Operation,and Considerate Service”,our business mainly focus on the distribution of electronic components. Line cards we deal with include Microchip,ALPS,ROHM,Xilinx,Pulse,ON,Everlight and Freescale. Main products comprise IC,Modules,Potentiometer,IC Socket,Relay,Connector.Our parts cover such applications as commercial,industrial, and automotives areas.

We are looking forward to setting up business relationship with you and hope to provide you with the best service and solution. Let us make a better world for our industry!



Contact us

Tel: +86-755-8981 8866 Fax: +86-755-8427 6832

Email & Skype: info@chipsmall.com Web: www.chipsmall.com

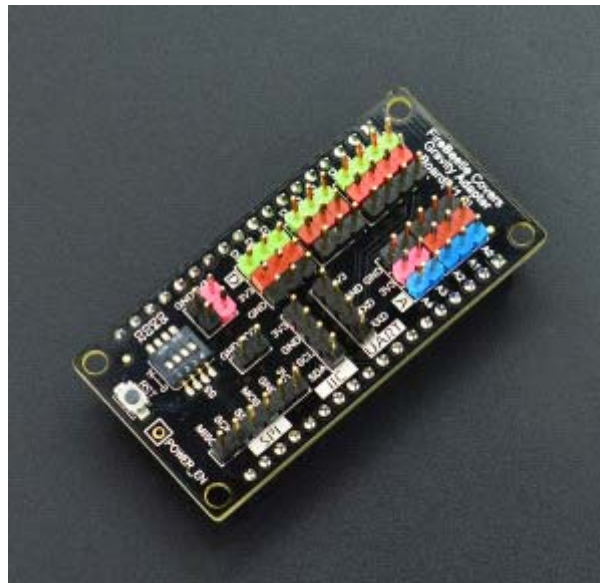
Address: A1208, Overseas Decoration Building, #122 Zhenhua RD., Futian, Shenzhen, China





FireBeetle Covers-Gravity I/O Expansion Shield

SKU: DFR0483



Introduction

DFRobot FireBeetle series is the low-power consumption micro-controller intentionally designed for Internet of Things (IoT). The series micro-controllers aims at IoT node of low-power consumption, attending to build the IoT hardware platform quickly and conveniently. There are three types of FireBeetle, containing Boards (main control), Covers (expansion boards) and related Accessories. FireBeetle Covers-Gravity I/O Expansion Shield is an adapter for Gravity sensors and modules. With this shield, you can achieve convenient connection between Gravity sensors and FireBeetles. Every sensor will have its independent power pins.



Note: Please pay attention that the working voltage is 3.3V only. (Red pins)

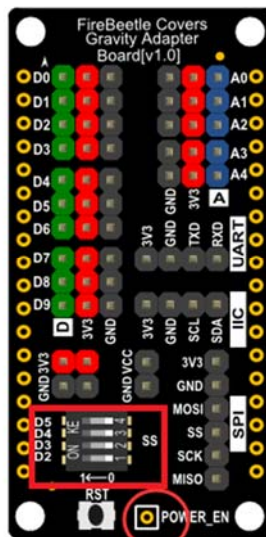
Features

- DFRobot FireBeetle Compatible
- Gravity interface, plug and play, easy to use
- Cost-effective
- Small size, convenient to install

Specification

- Input voltage : 3.7V~5.5V (VCC)
- Output voltage : 3.3V
- Supports low-power consumption Mode: POWER_EN = LOW
- Support maximum discharge current: 600mA(Output voltage: LDO-3.3V)
- Interface: Gravity standard interface.
- Digital I/O Pins: 10
- Analog Input Pins: 5
- Supports I2C x1
- Supports UART x1
- Supports SPI x1
- Dimension: 29.00×58.00mm

Board Overview



FireBeetle Covers-Gravity I/O Expansion Shield

	Label	Description
1	POWER_EN	Low-power Consumption Enable Pin (Default: HIGH), POWER_EN = LOW, 3V3 Pins (Red) = 0V; POWER_EN = HIGH, 3V3 Pins (Red) = 3.3V;
2	SS	SPI SS (CS) Pin: D2, D3, D4, D5

Dimension

