



Chipsmall Limited consists of a professional team with an average of over 10 year of expertise in the distribution of electronic components. Based in Hongkong, we have already established firm and mutual-benefit business relationships with customers from,Europe,America and south Asia,supplying obsolete and hard-to-find components to meet their specific needs.

With the principle of "Quality Parts,Customers Priority,Honest Operation,and Considerate Service",our business mainly focus on the distribution of electronic components. Line cards we deal with include Microchip,ALPS,ROHM,Xilinx,Pulse,ON,Everlight and Freescale. Main products comprise IC,Modules,Potentiometer,IC Socket,Relay,Connector.Our parts cover such applications as commercial,industrial, and automotives areas.

We are looking forward to setting up business relationship with you and hope to provide you with the best service and solution. Let us make a better world for our industry!



Contact us

Tel: +86-755-8981 8866 Fax: +86-755-8427 6832

Email & Skype: info@chipsmall.com Web: www.chipsmall.com

Address: A1208, Overseas Decoration Building, #122 Zhenhua RD., Futian, Shenzhen, China



MXChip Microsoft Azure IoT Developer Kit

Num	Function
L1	Power LED
L2	Link LED
L3	WIFI LED
L4	Azure LED
L5	User LED

WIFI Module

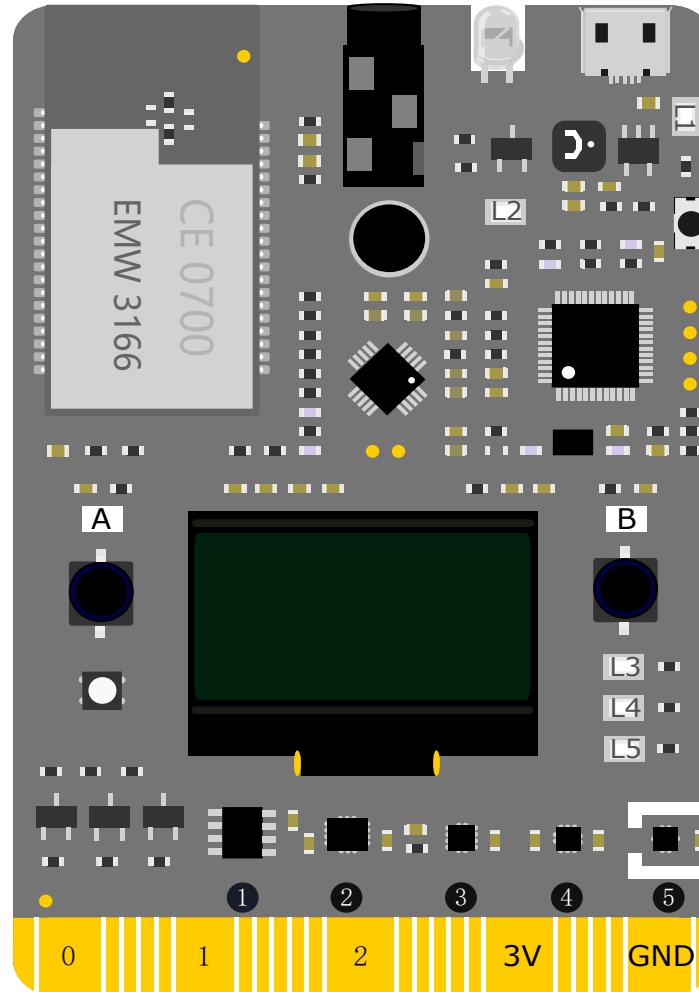
Headphone

IR LED

Audio Codec

WIFI Test Button

RGB LED



Micro USB

Reset Key

Microphone

Arduino Compatible

Sensor Config Button

OLED 128*64

- ① Security IC
- ② Motion Sensor
- ③ Magnetometer Sensor
- ④ Pressure Sensor
- ⑤ Humidity&Temperature

Extension Interface



DFROBOT
DRIVE THE FUTURE

www.DFRobot.com
www.DFRobot.com.cn