



Chipsmall Limited consists of a professional team with an average of over 10 year of expertise in the distribution of electronic components. Based in Hongkong, we have already established firm and mutual-benefit business relationships with customers from,Europe,America and south Asia,supplying obsolete and hard-to-find components to meet their specific needs.

With the principle of “Quality Parts,Customers Priority,Honest Operation,and Considerate Service”,our business mainly focus on the distribution of electronic components. Line cards we deal with include Microchip,ALPS,ROHM,Xilinx,Pulse,ON,Everlight and Freescale. Main products comprise IC,Modules,Potentiometer,IC Socket,Relay,Connector.Our parts cover such applications as commercial,industrial, and automotives areas.

We are looking forward to setting up business relationship with you and hope to provide you with the best service and solution. Let us make a better world for our industry!



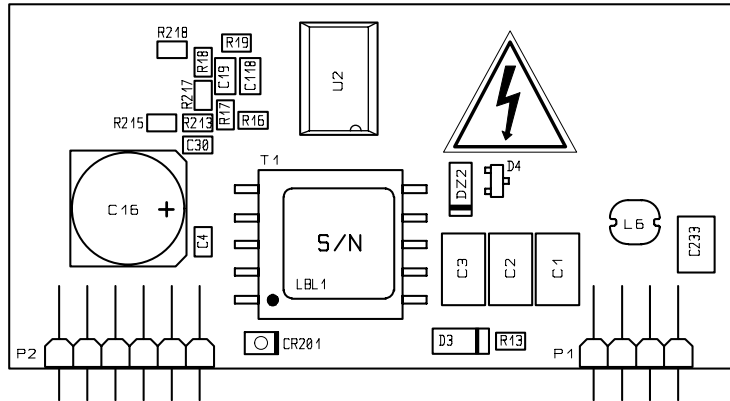
## Contact us

Tel: +86-755-8981 8866 Fax: +86-755-8427 6832


Email & Skype: info@chipsmall.com Web: www.chipsmall.com

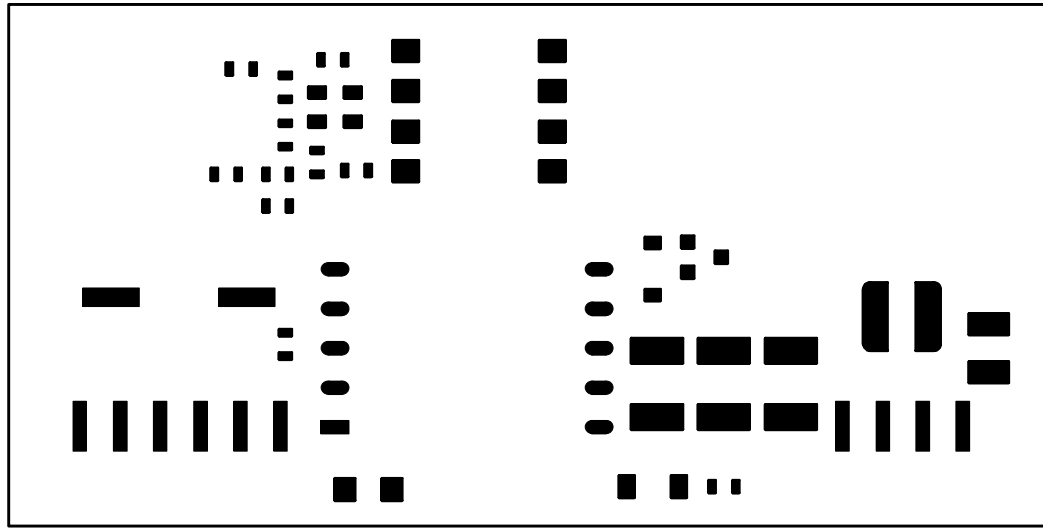
Address: A1208, Overseas Decoration Building, #122 Zhenhua RD., Futian, Shenzhen, China



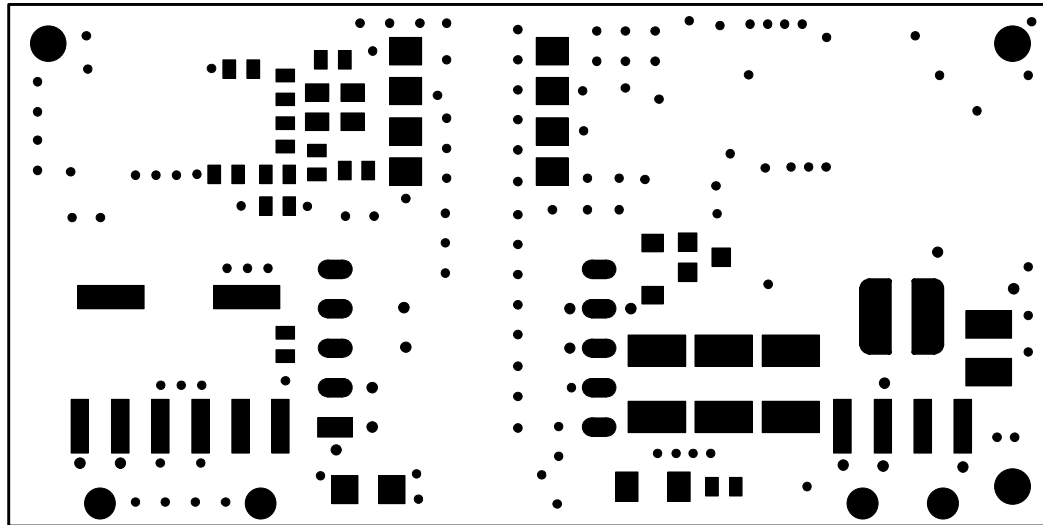


This reference schematic and the design it embodies is owned by Digi International.  
 A LICENSE TO USE and modify this design IS GRANTED TO DIGI INTERNATIONAL CUSTOMERS FOR DEVELOPMENT AND PRODUCTION PURPOSES.  
 IT MAY BE USED ONLY IN CONJUNCTION WITH A DIGI INTERNATIONAL PRODUCT AND FOR NO OTHER PURPOSE.

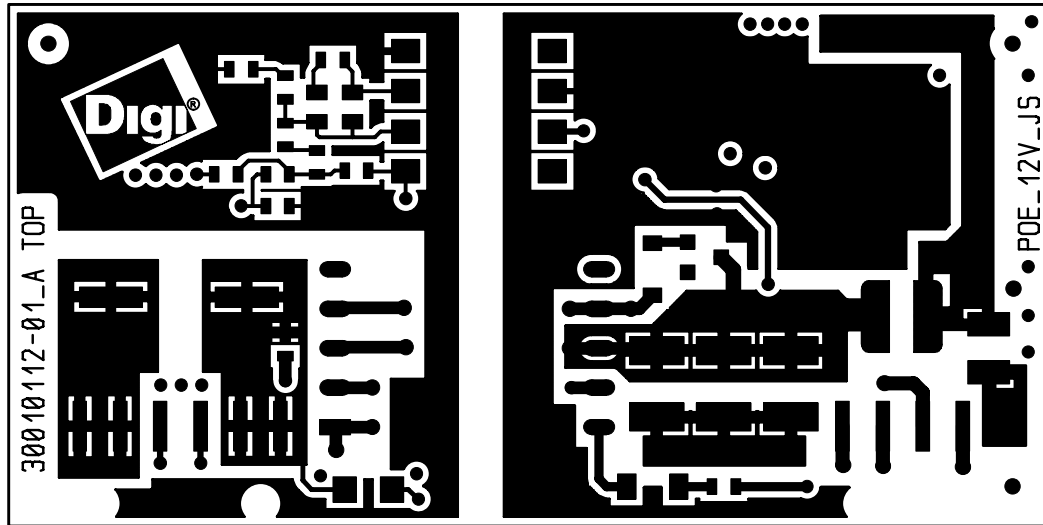
Usable for:				Scale: 1.5		Filename: POE_12V_J5.pcb	
				<b>POE Application Kit</b> <small>Note: This layout version is for reference only. Some parts may not be equipped or may have different values.</small>			
				<b>Designer</b>	<b>Date</b>	<b>Name</b>	<b>Title:</b>  Placement TOP Side
				SC	09.10.2008	SC	
				<b>Approved</b>			
				<b>ISO</b>			
						<b>Partnumber:</b>	<b>Sheet</b>
						30010114-01 Rev A	1
<b>Rev.</b>	<b>Modification</b>	<b>Date</b>	<b>Name</b>	<b>Provided for:</b>		<b>Provided by:</b>	
01	Initial Layout	09.10.08	SC			of 2	



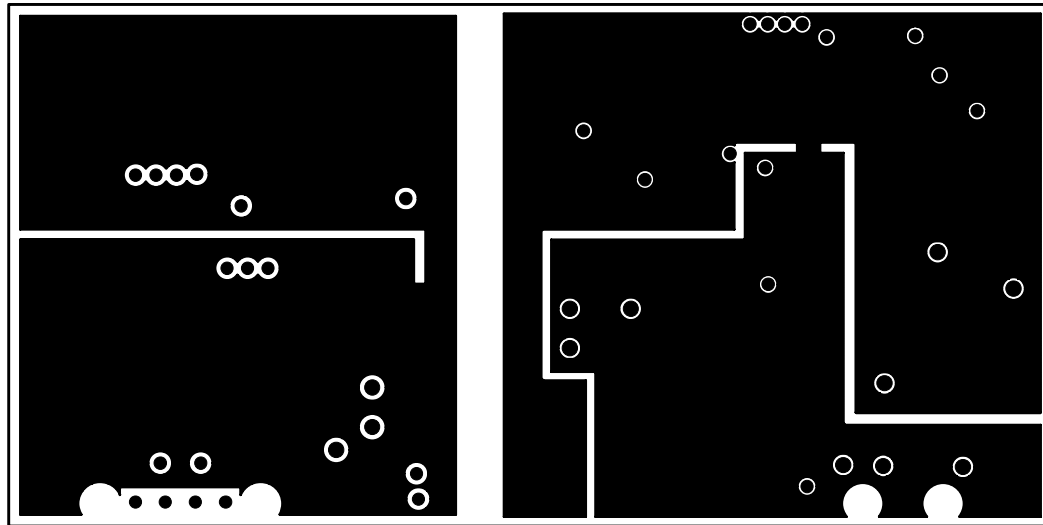
POE\_12V\_JS Paste TOP  
09.10.08



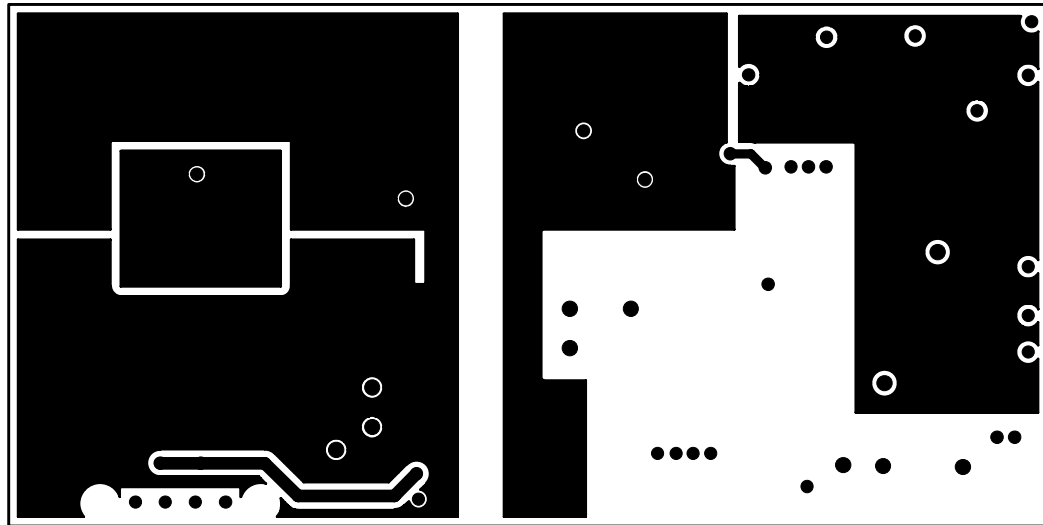
POE\_12V\_JS Solder Mask TOP  
09.10.08



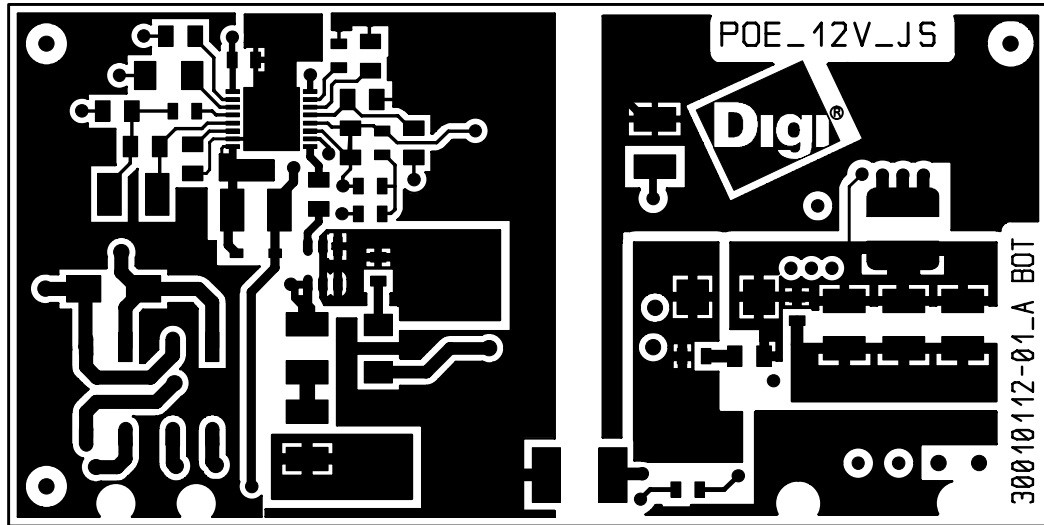
POE\_12V\_JS Layer 1 TOP  
09.10.08



POE\_12V\_JS Layer2 GND  
09.10.08

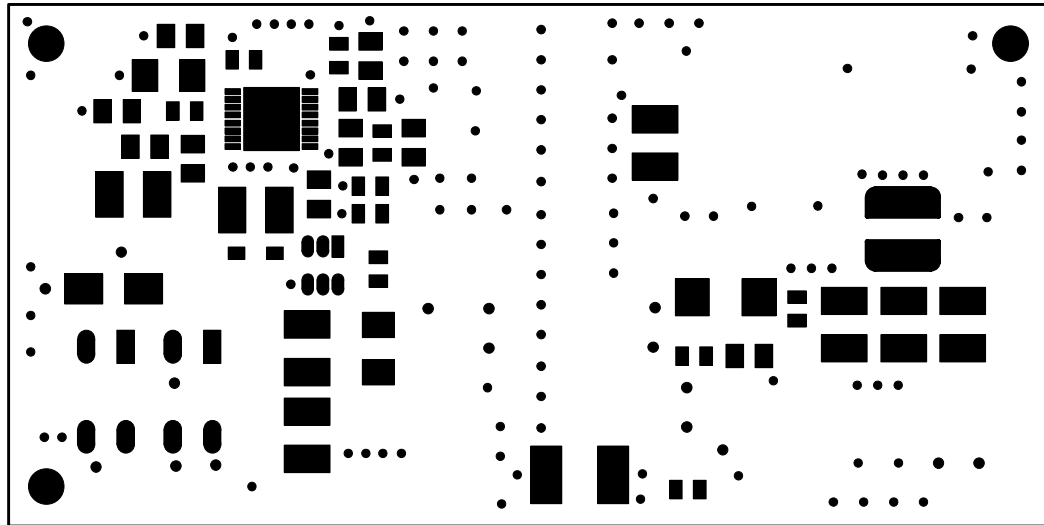


POE\_12V\_JS Layer3 VCC/GND  
09.10.08

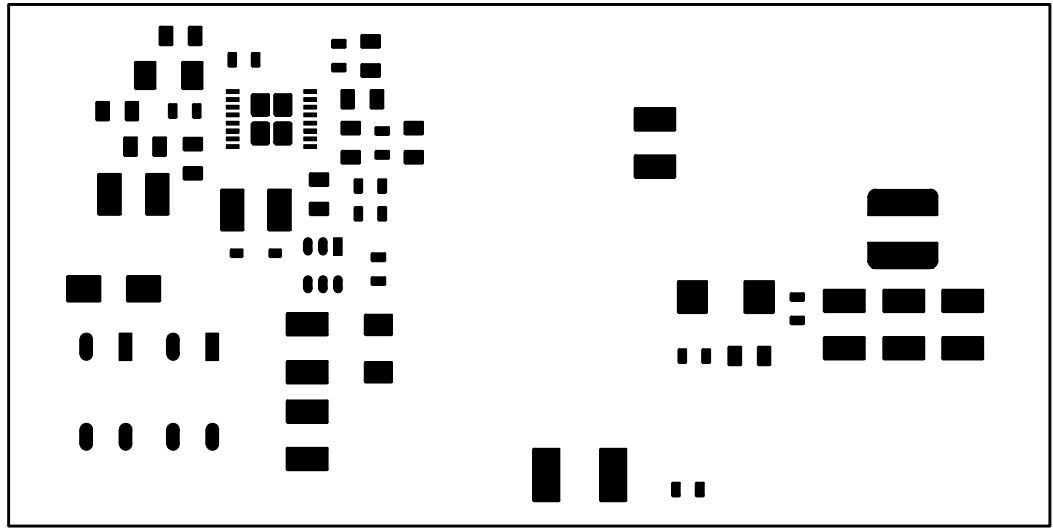


POE\_12V\_JS Layer 4 BOT  
09.10.08

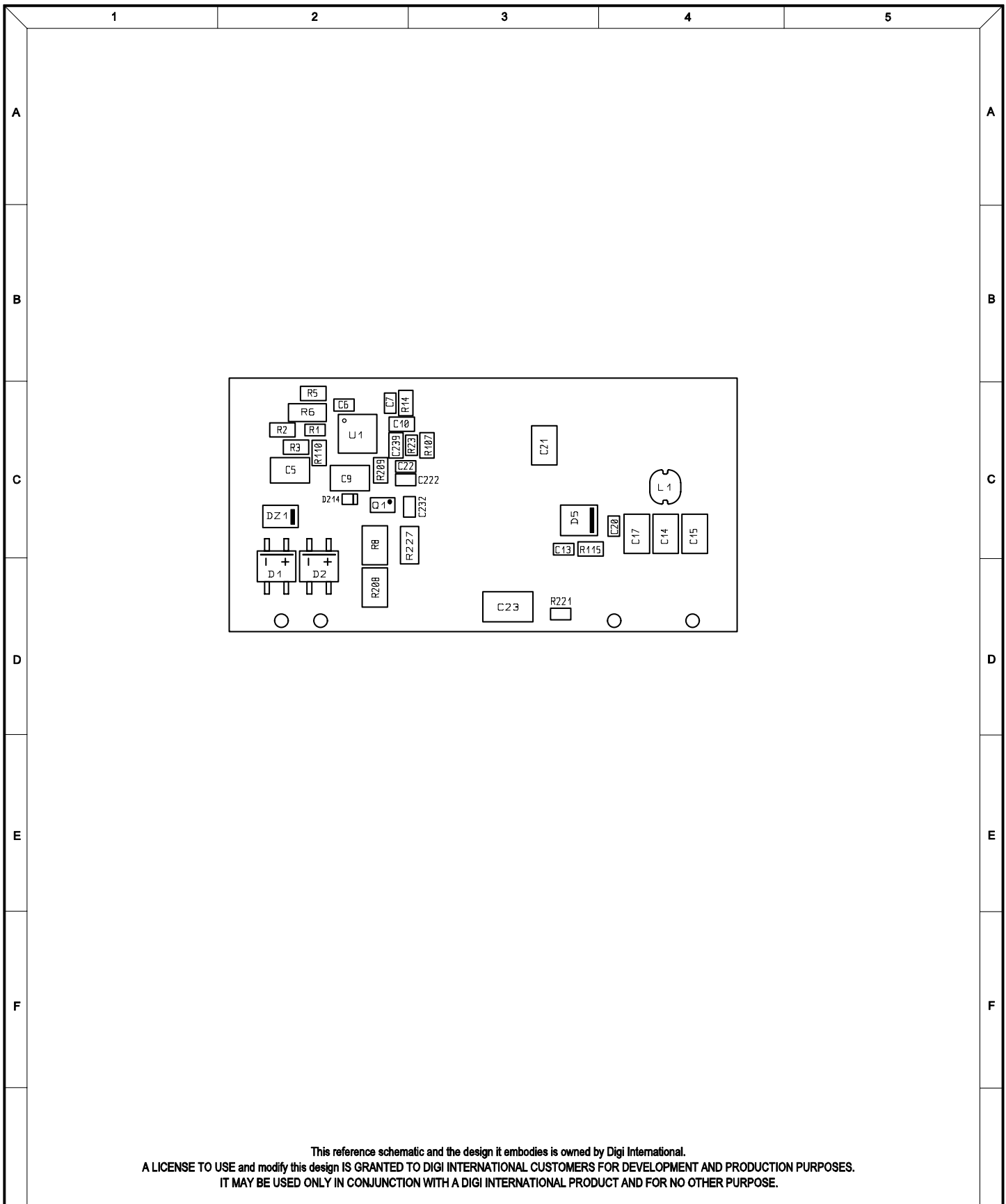





POE\_12V\_JS Solder Mask BOT  
09.10.08



POE\_12V\_JS Paste BOT  
09.10.08



This reference schematic and the design it embodies is owned by Digi International.  
 A LICENSE TO USE and modify this design IS GRANTED TO DIGI INTERNATIONAL CUSTOMERS FOR DEVELOPMENT AND PRODUCTION PURPOSES.  
 IT MAY BE USED ONLY IN CONJUNCTION WITH A DIGI INTERNATIONAL PRODUCT AND FOR NO OTHER PURPOSE.

Usable for:				Scale: 1.5		Filename: POE_12V_J5.pcb		
				<b>POE Application Kit</b> Note: This layout version is for reference only. Some parts may not be equipped or may have different values.				
				Designer	Date	Name	Title:  <b>Placement Bottom Side</b>	
				Approved				
				ISO				
							Partnumber:	Sheet
01	Initial Version	09.10.08	SC				30010114-01 Rev A	
Rev.	Modification	Date	Name	Provided for:			of	
							2	
				Provided by:				