



Chipsmall Limited consists of a professional team with an average of over 10 year of expertise in the distribution of electronic components. Based in Hongkong, we have already established firm and mutual-benefit business relationships with customers from,Europe,America and south Asia,supplying obsolete and hard-to-find components to meet their specific needs.

With the principle of “Quality Parts,Customers Priority,Honest Operation,and Considerate Service”,our business mainly focus on the distribution of electronic components. Line cards we deal with include Microchip,ALPS,ROHM,Xilinx,Pulse,ON,Everlight and Freescale. Main products comprise IC,Modules,Potentiometer,IC Socket,Relay,Connector.Our parts cover such applications as commercial,industrial, and automotives areas.

We are looking forward to setting up business relationship with you and hope to provide you with the best service and solution. Let us make a better world for our industry!



## Contact us

Tel: +86-755-8981 8866 Fax: +86-755-8427 6832

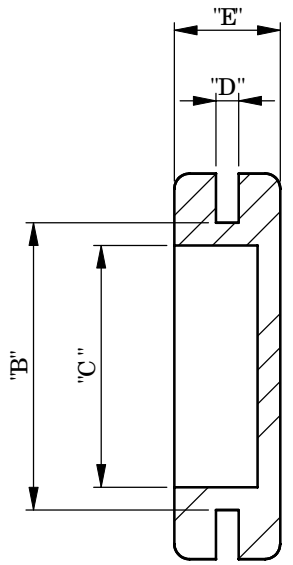
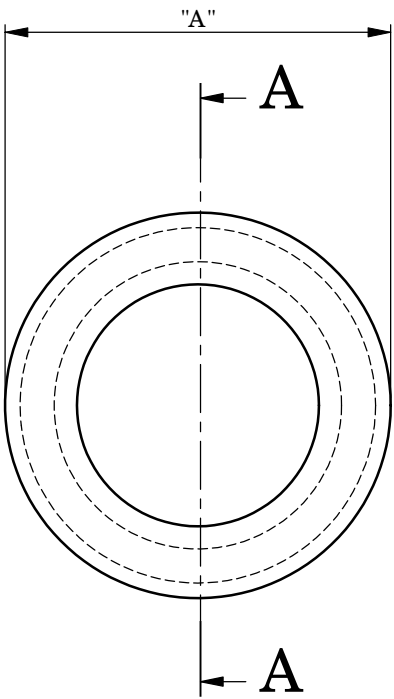
Email & Skype: info@chipsmall.com Web: www.chipsmall.com

Address: A1208, Overseas Decoration Building, #122 Zhenhua RD., Futian, Shenzhen, China

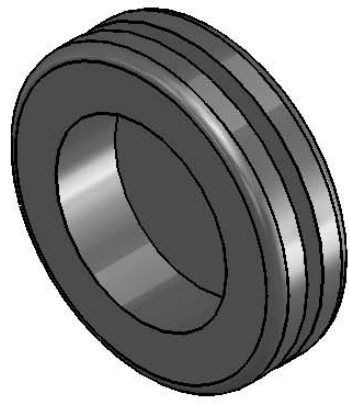


A B C D E F

REV.	MODIFICATION.	DATE	DRN
A	NEW DWG	221295	
B	SC N99-027	290499	JPM
C	SC N01-110	251001	JPM
D	EC N# 802	160604	NJB
E	EC R05-041	310305	NBr
06	EC R06-032	180106	OW
07	EC R06-035	260106	OW
08	EC N07-050	270207	OW
09	CO 2010506	101208	SF
10	CO 2010770	18/08/09	OW



SECTION A-A



**NOTES**

- 1a) METRIC PRIMARY UNITS: mm
- 1b) IMPERIAL SECONDARY UNITS: [inches]
- 2) PARTS ALSO AVAILABLE IN V0 RATED MATERIAL (RMS-263) BY SPECIAL ORDER.
- 3) PARTS ALSO AVAILABLE IN V0 RATED WHITE MATERIAL (RMS-263) BY SPECIAL ORDER. ADD "V0WH" TO END OF PART NUMBER.

**ALTERNATE UNITS FOR REFERENCE ONLY**

INFORMATION CONTAINED IN THIS DOCUMENT IS CONFIDENTIAL TO RICHCO INTERNATIONAL Co., Ltd. AND MAY NOT BE DISCLOSED OR REPRODUCED IN WHOLE OR PART WITHOUT THEIR WRITTEN CONSENT.

PART No.	"A"	"B"	"C"	"D"	"E"
DGB-2.5	9.4 [.37]	6.4 [.25]	4.1 [.16]	0.8 [.03]	3.6 [.14]
DGB-4	12.7 [.50]	9.9 [.39]	6.4 [.25]	1.5 [.06]	6.6 [.26]
DGB-5	15.7 [.62]	12.5 [.49]	9.5 [.37]		6.4 [.25]
DGB-6	17.5 [.69]	11.0 [.43]	8.0 [.31]		8.0 [.31]
DGB-7	19.0 [.75]	16.0 [.63]	11.0 [.43]	1.5 [.06]	8.0 [.31]
DGB-10	25.5 [1.00]	22.0 [.87]	18.4 [.72]		7.0 [.28]
DGB-11		19.0 [.75]	16.0 [.63]		8.0 [.31]
DGB-13		25.5 [1.00]	20.5 [.81]		8.0 [.31]

<b>RIC HCO, INC.</b> WWW.RICHCO-INC.COM		GENERAL TOLERANCE FOR REFERENCE ONLY ±0.5 [.02] UNLESS OTHERWISE STATED ANGULAR ±1°	
		THIRD ANGLE	
MATERIAL: <b>TPE (RMS-262)</b>		COLOUR: <b>BLACK</b>	
DESCRIPTION: <b>DIAPHRAGM GROMMET, BLIND</b>		PART No.: <b>SEE TABLE</b>	
DRG No.: <b>770-0001</b>	NPR No.: <b>N/A</b>	SHEET SIZE <b>A4</b>	
DRN <b>OW</b>	DATE <b>31/03/05</b>	CHKD <b>NBr</b>	DATE <b>31/03/05</b>
SCALE <b>NTS</b>	SHEET No. <b>1 OF 1</b>		

A B C D E F FORM No. 0145/03