



Chipsmall Limited consists of a professional team with an average of over 10 year of expertise in the distribution of electronic components. Based in Hongkong, we have already established firm and mutual-benefit business relationships with customers from,Europe,America and south Asia,supplying obsolete and hard-to-find components to meet their specific needs.

With the principle of “Quality Parts,Customers Priority,Honest Operation,and Considerate Service”,our business mainly focus on the distribution of electronic components. Line cards we deal with include Microchip,ALPS,ROHM,Xilinx,Pulse,ON,Everlight and Freescale. Main products comprise IC,Modules,Potentiometer,IC Socket,Relay,Connector.Our parts cover such applications as commercial,industrial, and automotives areas.

We are looking forward to setting up business relationship with you and hope to provide you with the best service and solution. Let us make a better world for our industry!



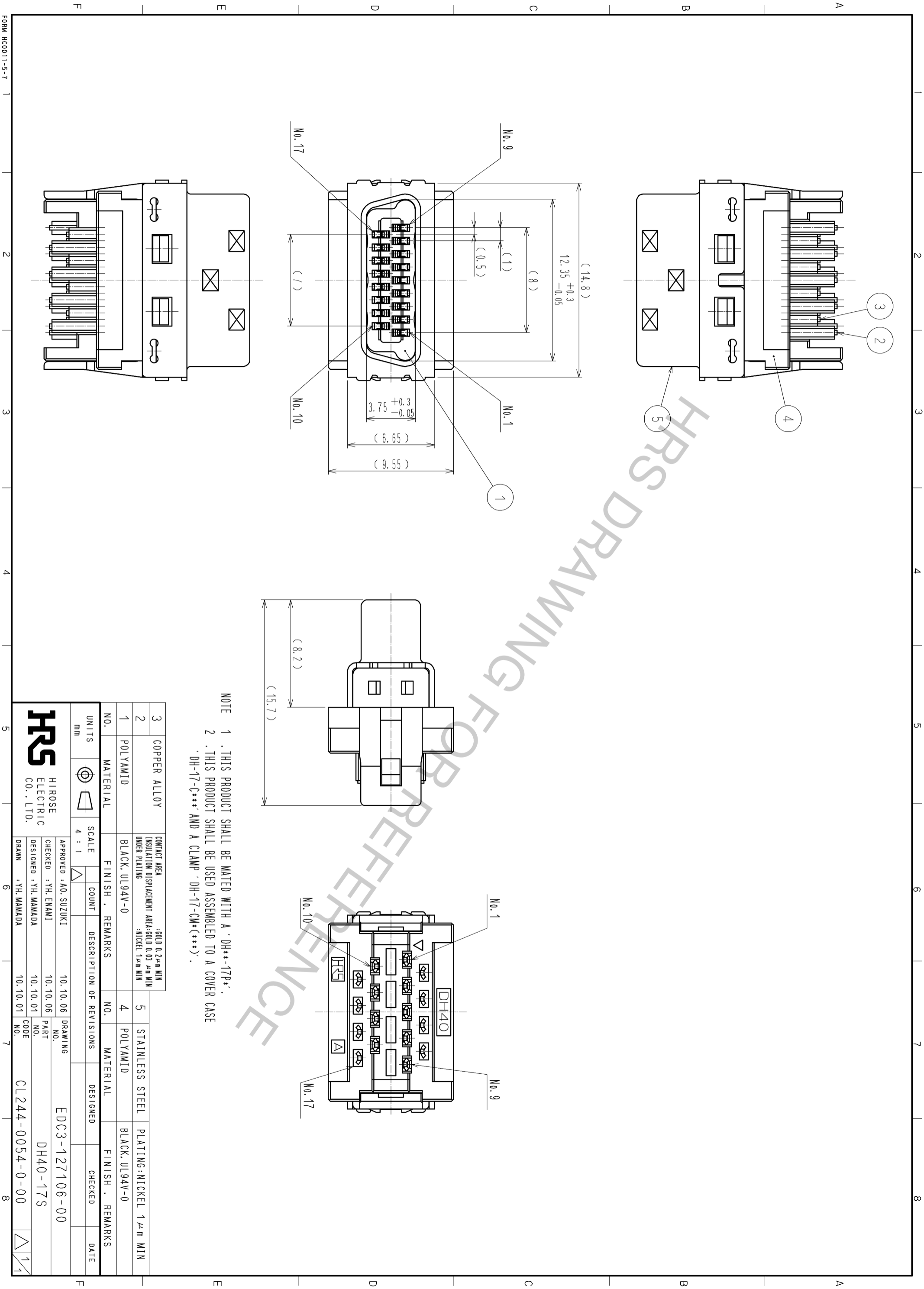
## Contact us

Tel: +86-755-8981 8866 Fax: +86-755-8427 6832

Email & Skype: info@chipsmall.com Web: www.chipsmall.com

Address: A1208, Overseas Decoration Building, #122 Zhenhua RD., Futian, Shenzhen, China





NOTE 1 . THIS PRODUCT SHALL BE MATED WITH A 'DH\*\*-17P\*'.  
 2 . THIS PRODUCT SHALL BE USED ASSEMBLED TO A COVER CASE  
 . DH-17-C\*\*\* AND A CLAMP . DH-17-CM\*(\*\*\*).

3	COPPER ALLOY	CONTACT AREA	:SOLD 0.2μm MIN	5	STAINLESS STEEL	PLATING:NICKEL 1μm MIN
2	POLYAMID	INSULATION DISPLACEMENT AREA: SOLD 0.03 μm MIN	:NICKEL 1μm MIN	4	POLYAMID	BLACK, UL94V-0
1	POLYAMID	BLACK, UL94V-0				

UNITS	SCALE	COUNT	DESCRIPTION OF REVISIONS	DESIGNED	CHECKED	DATE
mm	4 : 1					

APPROVED : AO, SUZUKI	10.10.06	DRAWING NO.	EDC3-127106-00
CHECKED : YH, ENAMI	10.10.06	PART NO.	DH40-17S
DESIGNED : YH, MAMADA	10.10.01	CODE NO.	CL244-0054-0-00
DRAWN : YH, MAMADA	10.10.01		