



Chipsmall Limited consists of a professional team with an average of over 10 year of expertise in the distribution of electronic components. Based in Hongkong, we have already established firm and mutual-benefit business relationships with customers from,Europe,America and south Asia,supplying obsolete and hard-to-find components to meet their specific needs.

With the principle of “Quality Parts,Customers Priority,Honest Operation,and Considerate Service”,our business mainly focus on the distribution of electronic components. Line cards we deal with include Microchip,ALPS,ROHM,Xilinx,Pulse,ON,Everlight and Freescale. Main products comprise IC,Modules,Potentiometer,IC Socket,Relay,Connector.Our parts cover such applications as commercial,industrial, and automotives areas.

We are looking forward to setting up business relationship with you and hope to provide you with the best service and solution. Let us make a better world for our industry!



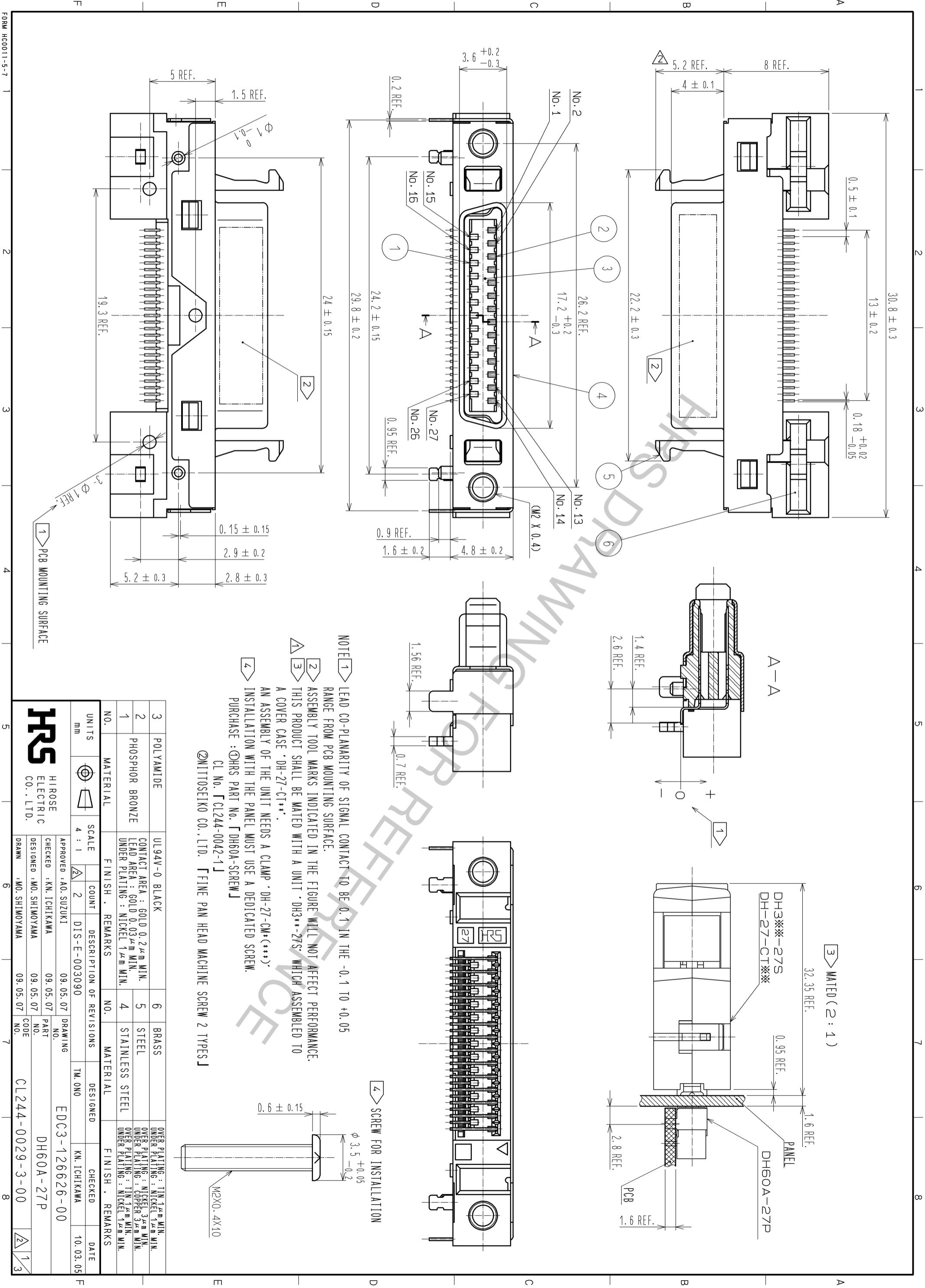
Contact us

Tel: +86-755-8981 8866 Fax: +86-755-8427 6832

Email & Skype: info@chipsmall.com Web: www.chipsmall.com

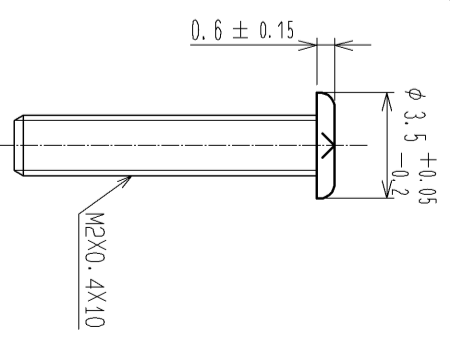
Address: A1208, Overseas Decoration Building, #122 Zhenhua RD., Futian, Shenzhen, China



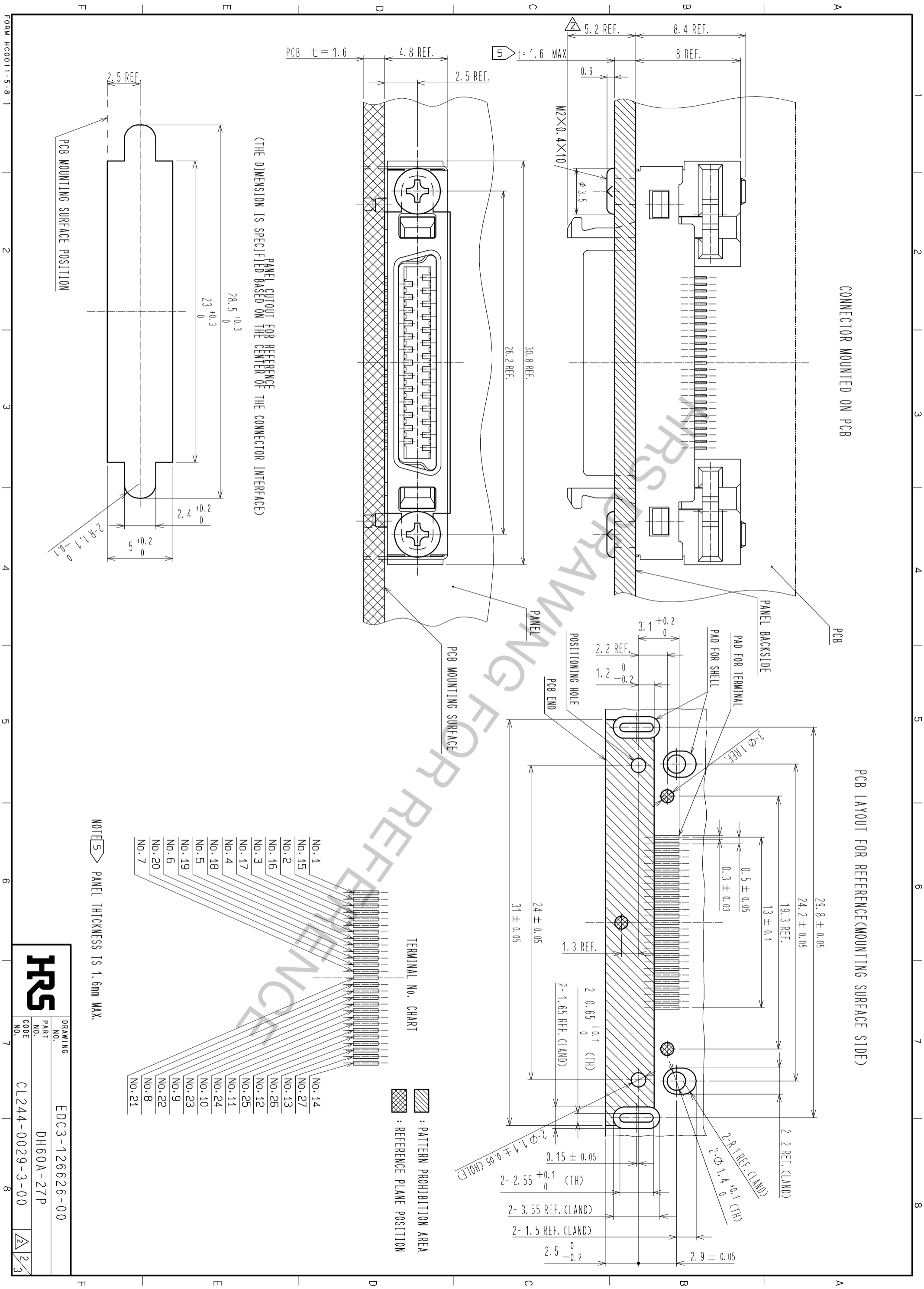


NOTE 1 LEAD CO-PLANARITY OF SIGNAL CONTACT TO BE 0.1 IN THE -0.1 TO +0.05 RANGE FROM PCB MOUNTING SURFACE.
 2 ASSEMBLY TOOL MARKS INDICATED IN THE FIGURE WILL NOT AFFECT PERFORMANCE.
 3 THIS PRODUCT SHALL BE MATED WITH A UNIT · DH3**·27S* WHICH ASSEMBLED TO A COVER CASE · DH-27-CT**.
 4 AN ASSEMBLY OF THE UNIT NEEDS A CLAMP · DH-27-CM*(***) · INSTALLATION WITH THE PANEL MUST USE A DEDICATED SCREW.
 PURCHASE : ①HRS PART NO.「DH60A-SCREW」
 CL No.「CL244-0042-1」
 ②NITTOSEIKO CO., LTD.「FINE PAN HEAD MACHINE SCREW 2 TYPES」

④ SCREW FOR INSTALLATION



3	POLYAMIDE	UL94V-0 BLACK	6	BRASS	OVER PLATING : TIN 1.2μm MIN. UNDER PLATING : NICKEL 1.2μm MIN.
2	PHOSPHOR BRONZE	CONTACT AREA : GOLD 0.2μm MIN. LEAD AREA : GOLD 0.03μm MIN. UNDER PLATING : NICKEL 1.2μm MIN.	5	STEEL	OVER PLATING : NICKEL 3.2μm MIN. UNDER PLATING : COPPER 3.2μm MIN.
1	MATERIAL	FINISH . REMARKS	4	STAINLESS STEEL	OVER PLATING : TIN 1.2μm MIN. UNDER PLATING : NICKEL 1.2μm MIN.
UNITS	mm	SCALE	4 : 1	COUNT	2
DESCRIPTION OF REVISIONS		DESIGNED	TM. ONO	CHECKED	KN. ICHIKAWA
APPROVED : AO. SUZUKI		DATE	09.05.07	NO.	EDC3-126626-00
CHECKED : KN. ICHIKAWA		PART NO.	09.05.07	NO.	DH60A-27P
DESIGNED : MO. SHIMOYAMA		CODE	09.05.07	NO.	CL244-0029-3-00
DRAWN : MO. SHIMOYAMA		NO.	09.05.07	NO.	



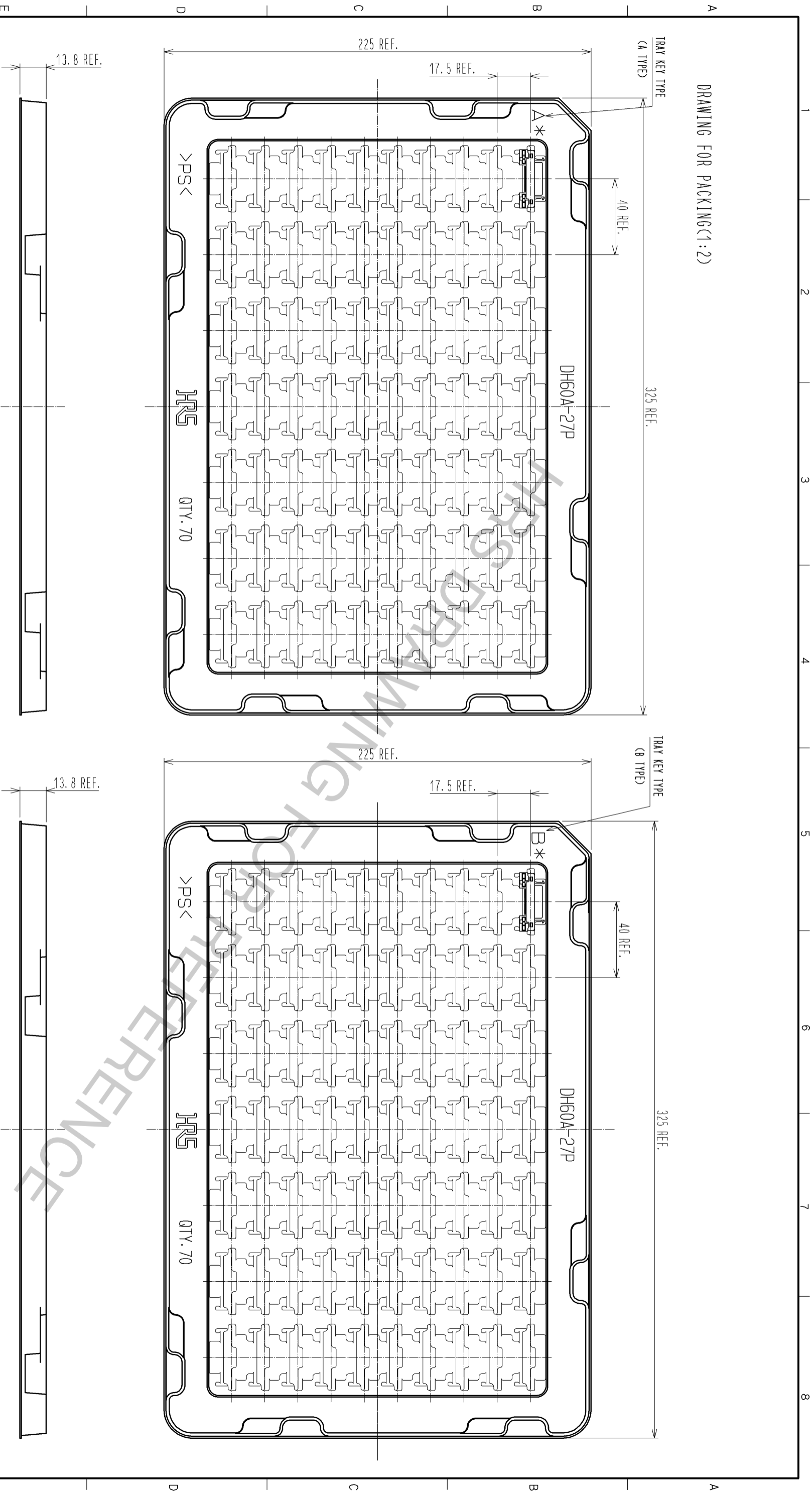
FORM HC0011-5-8

HRS

DRAWING NO.	EDC3-126626-00
PART NO.	DH60A-27P
CODE NO.	CL244-0029-3-00

2/3

DRAWING FOR PACKING(1:2)



※TRAYS, A TYPE AND B TYPE, ARE PILED UP ALTERNATELY.

FORM HC0011-5-8

2

3

4

5

6

7

8

HRS	
DRAWING NO.	EDC3-126626-00
PART NO.	DH60A-27P
CODE NO.	CL244-0029-3-00
3/3	