



Chipsmall Limited consists of a professional team with an average of over 10 year of expertise in the distribution of electronic components. Based in Hongkong, we have already established firm and mutual-benefit business relationships with customers from,Europe,America and south Asia,supplying obsolete and hard-to-find components to meet their specific needs.

With the principle of “Quality Parts,Customers Priority,Honest Operation,and Considerate Service”,our business mainly focus on the distribution of electronic components. Line cards we deal with include Microchip,ALPS,ROHM,Xilinx,Pulse,ON,Everlight and Freescale. Main products comprise IC,Modules,Potentiometer,IC Socket,Relay,Connector.Our parts cover such applications as commercial,industrial, and automotives areas.

We are looking forward to setting up business relationship with you and hope to provide you with the best service and solution. Let us make a better world for our industry!



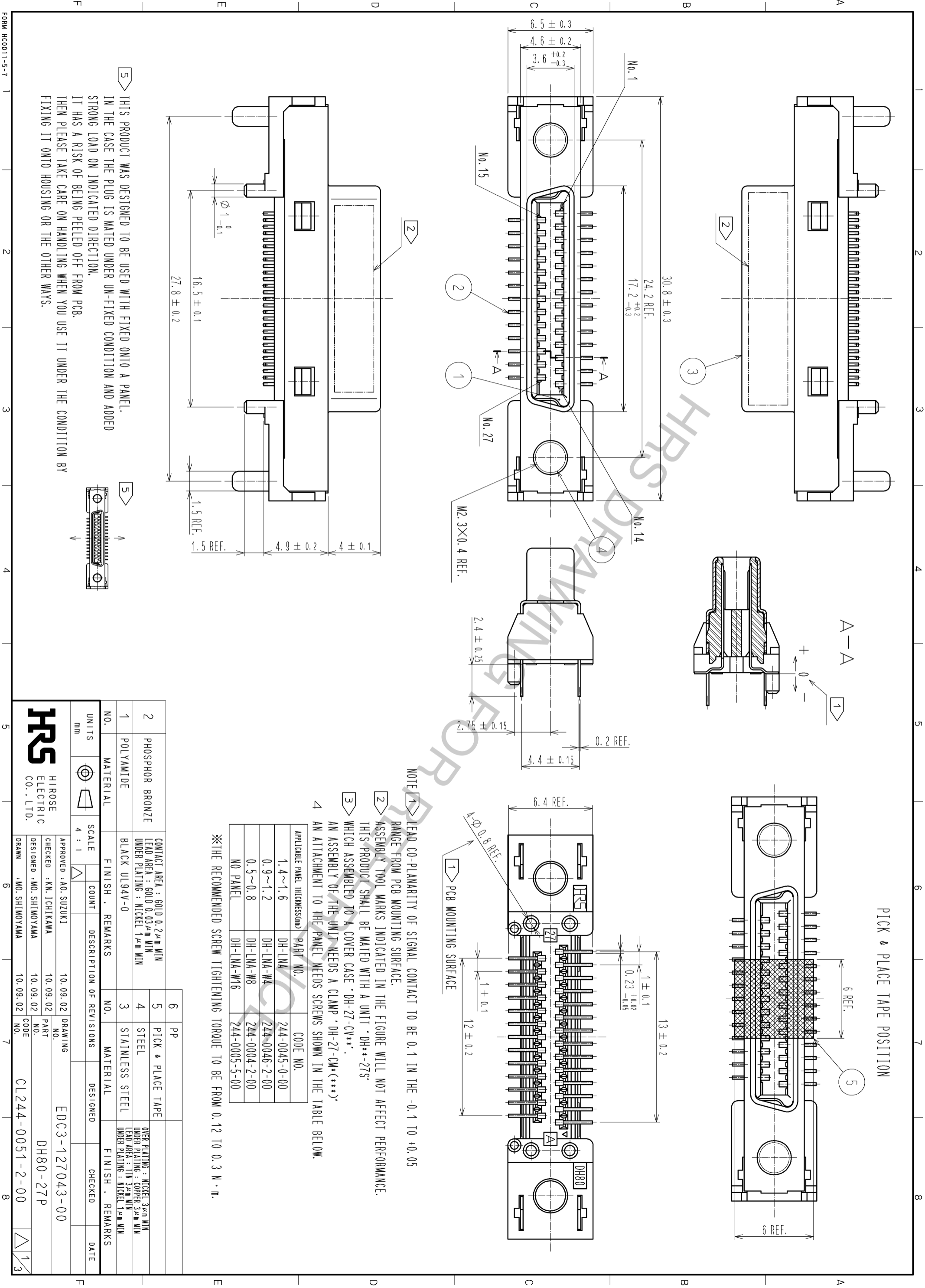
Contact us

Tel: +86-755-8981 8866 Fax: +86-755-8427 6832

Email & Skype: info@chipsmall.com Web: www.chipsmall.com

Address: A1208, Overseas Decoration Building, #122 Zhenhua RD., Futian, Shenzhen, China





PICK & PLACE TAPE POSITION

NOTE 1 LEAD CO-PLANARITY OF SIGNAL CONTACT TO BE 0.1 IN THE -0.1 TO +0.05 RANGE FROM PCB MOUNTING SURFACE.

NOTE 2 ASSEMBLY TOOL MARKS INDICATED IN THE FIGURE WILL NOT AFFECT PERFORMANCE.

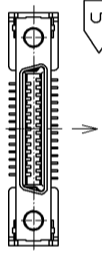
NOTE 3 THIS PRODUCT SHALL BE MATED WITH A UNIT 'DH**-27S' WHICH ASSEMBLED TO A COVER CASE 'DH-27-CV**'.

NOTE 4 AN ASSEMBLY OF THE UNIT NEEDS A CLAMP 'DH-27-CM*(***)' AN ATTACHMENT TO THE PANEL NEEDS SCREWS SHOWN IN THE TABLE BELOW.

APPLICABLE PANEL THICKNESS(mm)	PART NO.	CODE NO.
1.4~1.6	DH-LNA-0	244-0045-0-00
0.9~1.2	DH-LNA-W4	244-0046-2-00
0.5~0.8	DH-LNA-W8	244-0004-2-00
NO PANEL	DH-LNA-W16	244-0005-5-00

※THE RECOMMENDED SCREW TIGHTENING TORQUE TO BE FROM 0.12 TO 0.3 N · m.

5 THIS PRODUCT WAS DESIGNED TO BE USED WITH FIXED ONTO A PANEL. IN THE CASE THE PLUG IS MATED UNDER UN-FIXED CONDITION AND ADDED STRONG LOAD ON INDICATED DIRECTION, IT HAS A RISK OF BEING PEELLED OFF FROM PCB. THEN PLEASE TAKE CARE ON HANDLING WHEN YOU USE IT UNDER THE CONDITION BY FIXING IT ONTO HOUSING OR THE OTHER WAYS.



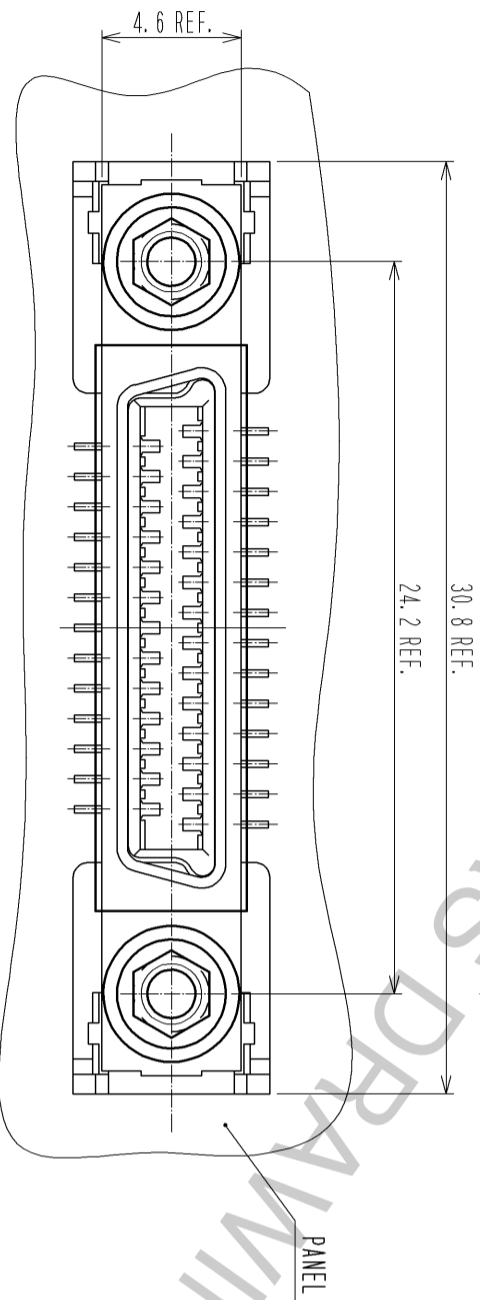
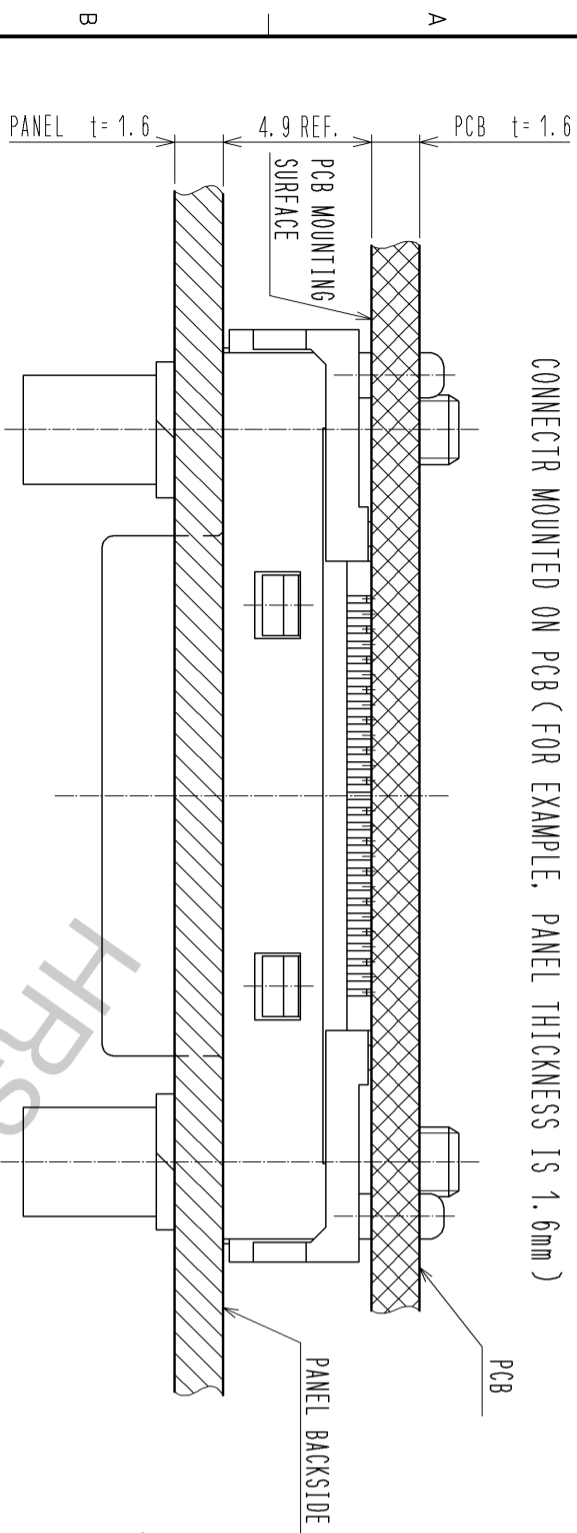
NO.	UNITS	MATERIAL	CONTACT AREA	LEAD AREA	UNDER PLATING	FINISH	REMARKS	NO.	MATERIAL	FINISH	REMARKS
2	PHOSPHOR BRONZE		GOLD 0.2 μm MIN	GOLD 0.03 μm MIN	NICKEL 1 μm MIN			5	PICK & PLACE TAPE		
1	POLYAMIDE					BLACK UL94V-0		4	STEEL		
								3	STAINLESS STEEL		

SCALE	COUNT	DESCRIPTION OF REVISIONS	DESIGNED	CHECKED	DATE
4 : 1					

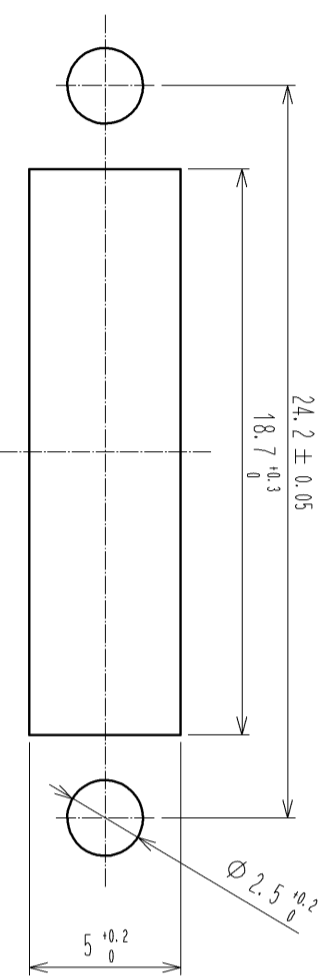
APPROVED	CHECKED	DESIGNED	DRAWING	PART	CODE
AO. SUZUKI	KN. ICHIKAWA	MO. SHIMOYAMA	10.09.02	10.09.02	10.09.02

APPROVED	CHECKED	DESIGNED	DRAWING	PART	CODE

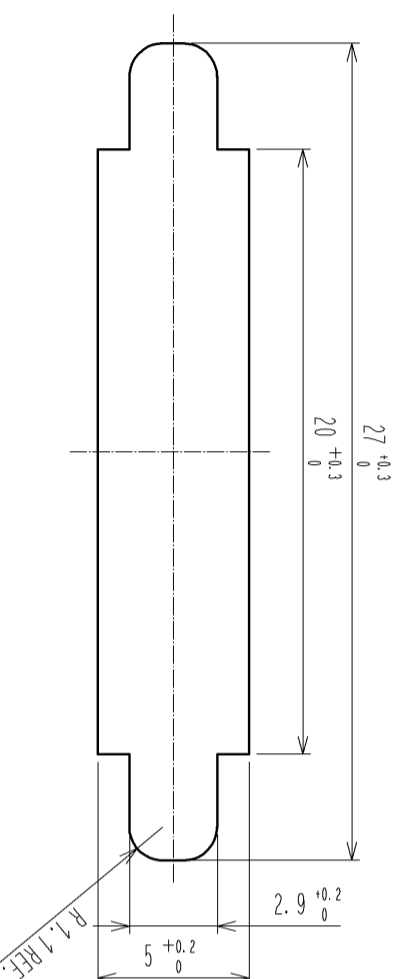
CONNECTOR MOUNTED ON PCB (FOR EXAMPLE, PANEL THICKNESS IS 1.6mm)



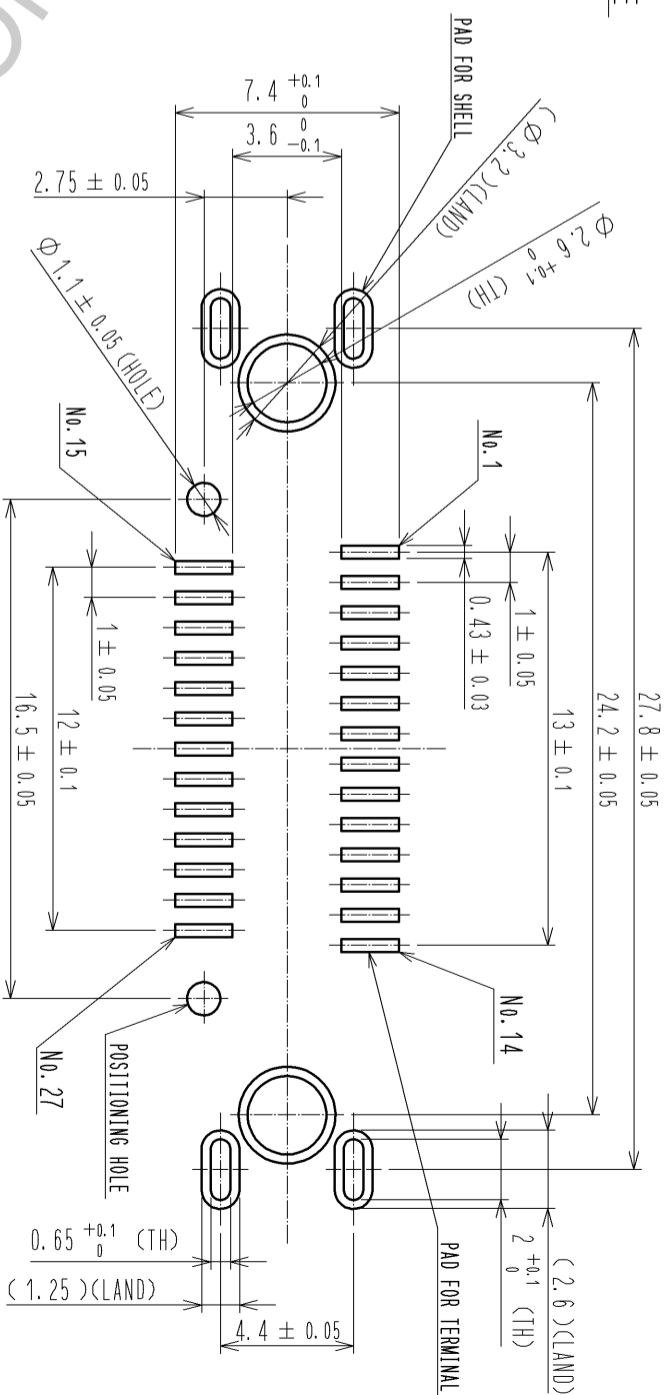
PANEL CUTOUT FOR REFERENCE
DH-LNA (CL244-0045-0-00) IS USED.



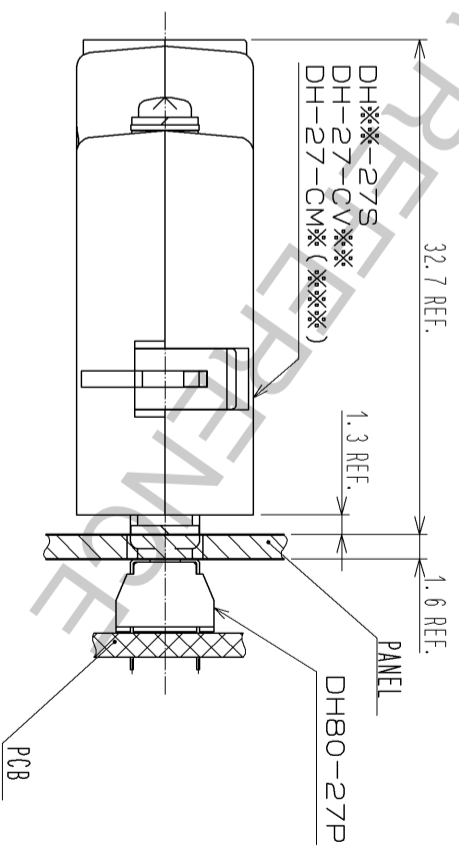
DH-LNA-W4 (CL244-0046-2-00)
DH-LNA-W8 (CL244-0004-2-00)
DH-LNA-W16 (CL244-0005-5-00) IS USED.



PCB LAYOUT FOR REFERENCE (MOUNTING SURFACE SIDE)



3 MATED (2:1)

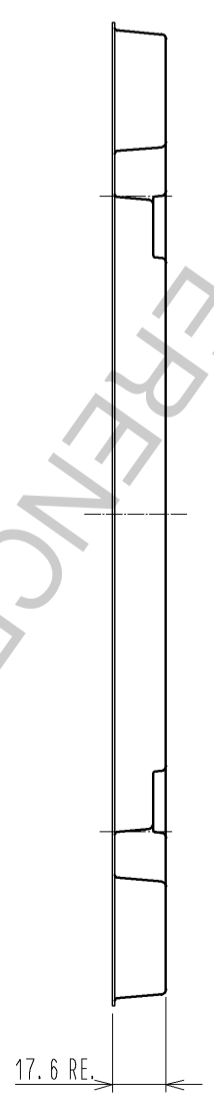
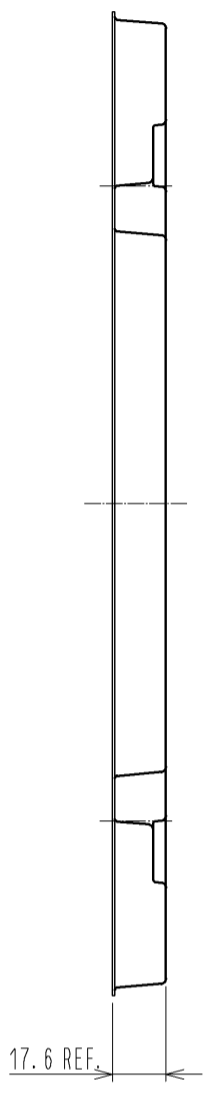
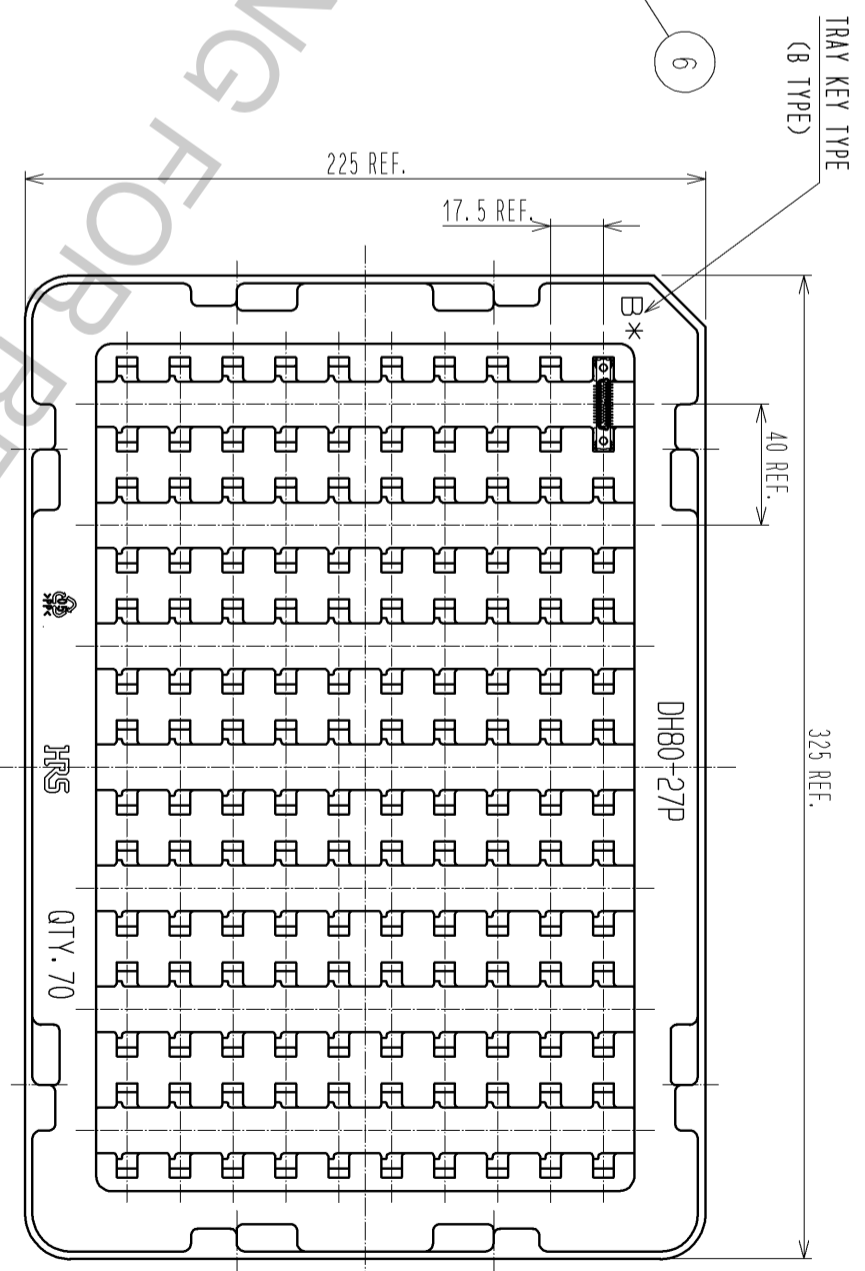
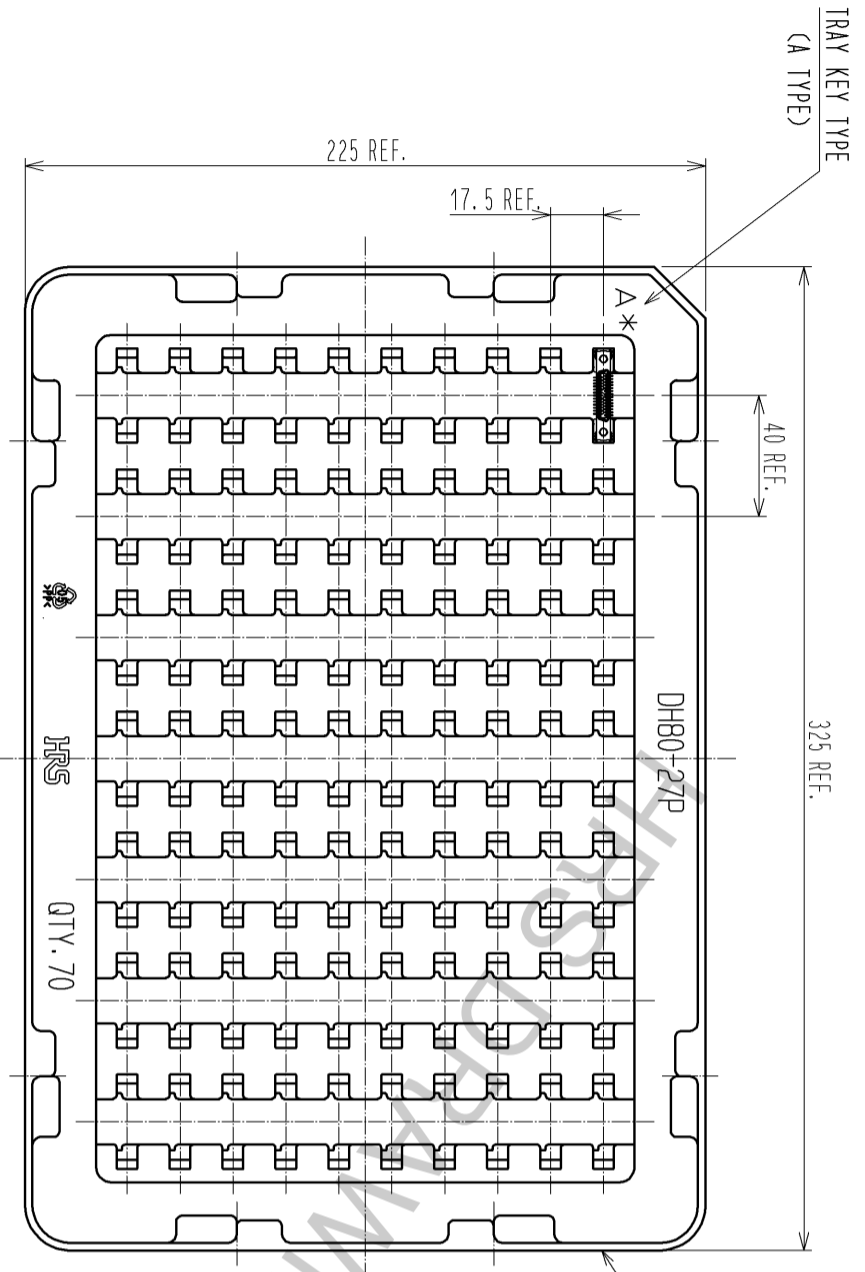


HRS

DRAWING NO. EDC3-127043-00
PART NO. DH80-27P
CODE NO. CL244-0051-2-00

2/3

DRAWING FOR PACKING(FREE)



※TRAYS, A TYPE AND B TYPE, ARE PILED UP ALTERNATELY.

DRAWING FOR REFERENCE

FORM HC0011-5-8

2

3

4

5

6

7

8

HRS	
DRAWING NO.	EDC3-127043-00
PART NO.	DH80-27P
CODE NO.	CL244-0051-2-00
	3/3