



Chipsmall Limited consists of a professional team with an average of over 10 year of expertise in the distribution of electronic components. Based in Hongkong, we have already established firm and mutual-benefit business relationships with customers from,Europe,America and south Asia,supplying obsolete and hard-to-find components to meet their specific needs.

With the principle of “Quality Parts,Customers Priority,Honest Operation,and Considerate Service”,our business mainly focus on the distribution of electronic components. Line cards we deal with include Microchip,ALPS,ROHM,Xilinx,Pulse,ON,Everlight and Freescale. Main products comprise IC,Modules,Potentiometer,IC Socket,Relay,Connector.Our parts cover such applications as commercial,industrial, and automotives areas.

We are looking forward to setting up business relationship with you and hope to provide you with the best service and solution. Let us make a better world for our industry!



## Contact us

Tel: +86-755-8981 8866 Fax: +86-755-8427 6832

Email & Skype: [info@chipsmall.com](mailto:info@chipsmall.com) Web: [www.chipsmall.com](http://www.chipsmall.com)

Address: A1208, Overseas Decoration Building, #122 Zhenhua RD., Futian, Shenzhen, China





**Delta Electronics Corp.**

## APPROVAL SHEET

**Customer Name .:** ---

**Model Name.:** HEATSINK

**Delta Part No.:** DHS-B9090-44

**Customer Part No.:** ---

**Spec Issue Date .:** 2011/10/19

**Spec Revision :** 00

PLEASE SEND ONE COPY OF THIS SPECIFICATION BACK AFTER YOU  
SIGNED APPROVAL FOR PRODUCTION PRE-ARRANGMENT.

**Approved By:** \_\_\_\_\_

**Date:** \_\_\_\_\_

Approval	Check	Designer
Charles. Chen	Charles. Chen	Sheila. Hu



# Delta Electronics Corp.

REV.	Description	Drawn	Checked	Approved	Issue Date
00	ISSUE SPEC	Sheila.Hu 10/19'11	Charles.Chen 10/19'11	Charles.Chen 10/19'11	
Description:					
SAMPLE REVISION CODE LIST					
Part No.					REV
DELTA MODEL :  DHS-B9090-44			TOTAL <u>10</u> PAGE		00



**Delta Electronics Corp.**

# **CONTENTS**

<b>Item</b>	<b>Element Description</b>	<b>Page</b>	<b>Note</b>
1	Specification	4	
2	Print	5	
3	Packing Plan	8	



# Delta Electronics Corp.

## 1. SPECIFICATION

### 1.1. Characters

Item	Description
Scope	THIS SPECIFICATION DEFINES MECHANICAL CHARACTERISTICS OF THE HEATSINK
Application	INTEL LGA1366 CPU HEATSINK
Specification	
a: Thermal Resistance	0.268 (°C/W) (REF.)
b: total weight	375 g (REF.)
c: clip force	35 lbf (REF.)

### 1.2. BOM

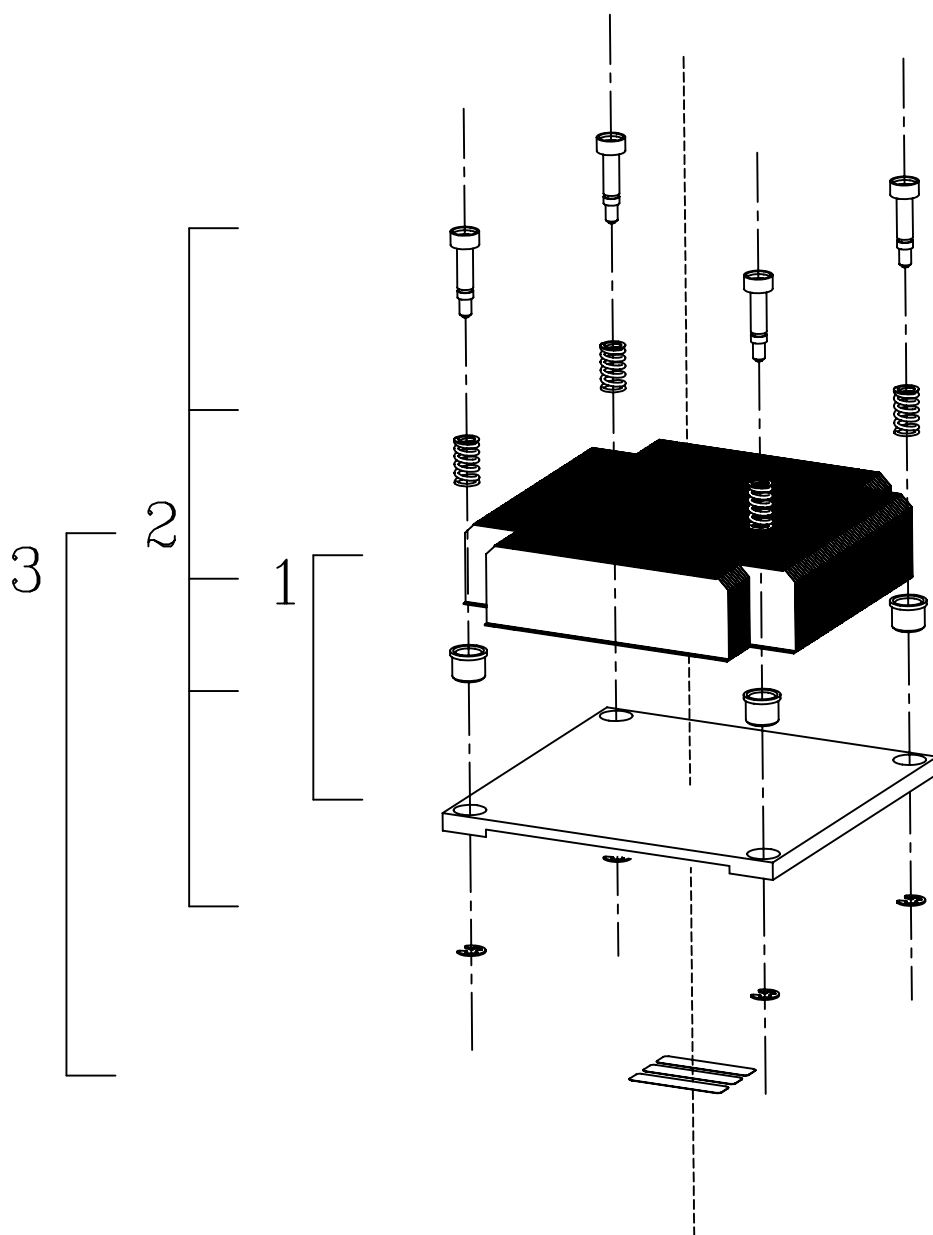
Item	Part Name	Material	Part NO.	Q'TY	Remark
1	FIN	AL1050	3346397700	1 PCE	
2	CU BASE	CU1100	3346841600	1 PCE	
3	CAP	SUS 303	3462384700	4 PCE	
4	SCREW	SUS 410	3105464700	4 PCE	
5	SPRING	MUSIC WIRE	3461809700	4 PCE	
6	E CLIP	S20C or S50C	3110262800	4 PCE	
7	GREASE	TC-1996	4021101500	0.308GRM	
8	AIR BUBBLE	PE	3522008500	0.125 PCE	
9	CARTON	PAPER	3513685100	0.042PCE	
10	PAD PAPER	PAPER	3516257800	0.167PCE	
11	TRAY	PET	3503113700	0.125 PCE	



**Delta Electronics Corp.**

## **2. PRINT**

### **2.1. Assembly Drawing**



SCREW (4X)  
3105464700

SPRING(4X)  
3461809700

FIN ASSY  
3346397700

CAP(4X)  
3462384700

CU BASE  
3346841600

E CLIP(4X)  
3110262800

TC-1996  
4021101500



台達電子工業股份有限公司  
DELTA ELECTRONICS, INC.

DELTA MODEL:  
DHS-B9090-44

Drawn:  
Sheila

THESE DRAWINGS AND SPECIFICATIONS ARE THE PROPERTY OF DELTA ELECTRONICS, INC. AND SHALL NOT BE REPRODUCED OR USED AS THE BASIS FOR THE MANUFACTURE OR SELL OF APPARATUSES OR DEVICES WITHOUT PERMISSION.

CUSTOMER NAME: STD

CUSTOMER P/N: - - -

DIMENSIONAL TOLERANCES

HOLES :  $\pm 0.05$  ANGLES :  $\pm 0.5^\circ$

( )	( )	( )	( )
<30	$\pm 0.25$	DECIMALS	UP-100 $\pm 0.2$
>30-100	$\pm 0.35$	X $\pm 0.3$	100-150 $\pm 0.25$
>100-300	$\pm 0.5$	XX $\pm 0.2$	150-200 $\pm 0.3$
ABOVE 300	$\pm 0.6$	X.XX $\pm 0.1$	200-250 $\pm 0.35$
			250-300 $\pm 0.4$
			300-350 $\pm 0.45$
			350-400 $\pm 0.5$
			400-600 $\pm 1.5$
			600-900 $\pm 2.4$
			900-OVER $\pm 3.1$



Description: PRODUCTION SPEC.  
(ASSEMBLY ORDER)

A4  
SIZE

Part No. DHS-B9090-44-AS

REV.

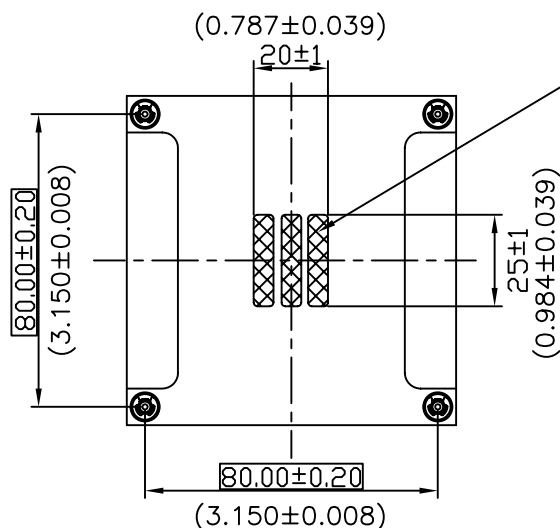
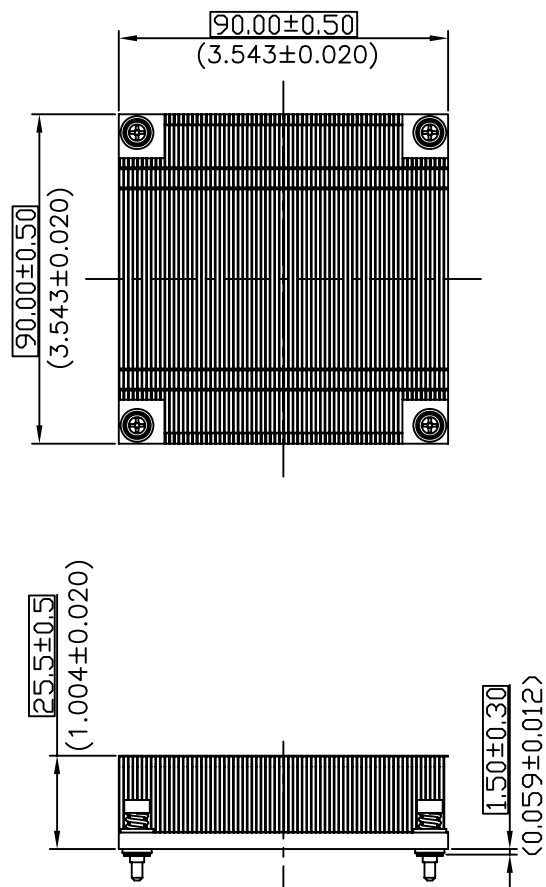
00

SHEET 1 OF 1 ISSUE DATE:

SCALE --- UNIT --- USED ON COOLER



DRAWING:



Dow Corning TC-1996 P/N:4021101500

\*STENCIL THICKNESS=0.20(TYP.) 0.22(MAX.)

TIM WEIGHT ON HSK MUST BE 250mg $\pm$ 30mg

UNIT:  $\frac{\text{mm}}{\text{INCH}}$



台達電子工業股份有限公司  
 DELTA ELECTRONICS, INC.

DELTA MODEL:

DHS-B9090-44

Drawn:

Sheila

THESE DRAWINGS AND SPECIFICATIONS ARE THE PROPERTY OF DELTA ELECTRONICS, INC. AND SHALL NOT BE REPRODUCED OR USED AS THE BASIS FOR THE MANUFACTURE OR SELL OF APPARATUSES OR DEVICES WITHOUT PERMISSION.

CUSTOMER NAME:

STD

CUSTOMER P/N:

---

DIMENSIONAL TOLERANCES

HOLES :  $\pm 0.05$  ANGLES :  $\pm 0.5^\circ$

( )	( )	( )	( )
<30	$\pm 0.25$	DECIMALS	UP-100 $\pm 0.2$
>30-100	$\pm 0.35$	X $\pm 0.3$	100-150 $\pm 0.25$
>100-300	$\pm 0.5$	XX $\pm 0.2$	150-200 $\pm 0.3$
ABOVE 300	$\pm 0.6$	XXX $\pm 0.1$	200-250 $\pm 0.35$
			250-300 $\pm 0.4$
			300-350 $\pm 0.45$
			350-400 $\pm 0.5$
			400-600 $\pm 1.5$
			600-900 $\pm 2.4$
			900-OVER $\pm 3.1$



Description:

PRODUCTION SPEC.  
 (PHYSICAL DIMENSION)

A4  
 SIZE

Part No.

DHS-B9090-44-PD

REV.

00

SHEET 1 OF 1

ISSUE DATE:

SCALE

UNIT

USED ON

COOLER

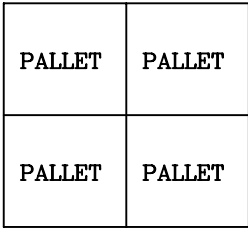
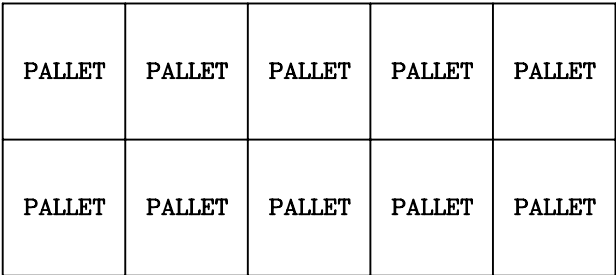
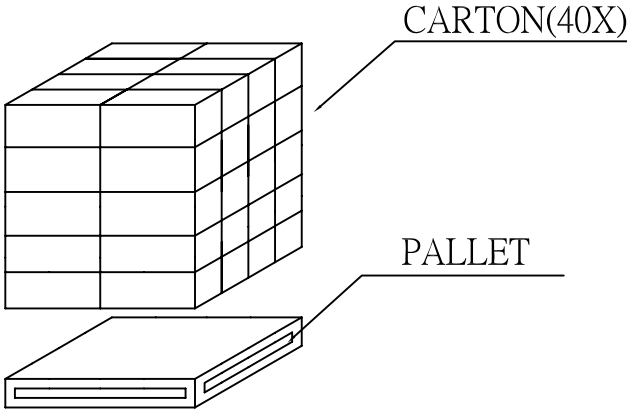




**Delta Electronics Corp.**

### **3. PACKING PLAN**

#### **Packing Specification**

PART NO.	DHS-B9090-44				
BASIC DATA	QUANTITY/CARTON		24PCS (3 LAYERS/CARTON, 8PCS/LAYER)		
	PRODUCTION NET WEIGHT		9.0kg (REF.)		
	PRODUCTION GROSS WEIGHT		10.6kg (REF.)		
20(ft)CONTAINER ILLUSTRATE	SIZE	5.889(L)*2.352(w)*2.386(H)m		PACKING QUANTITY	20PALLETS/CONTAINER
	CONTAINER	STEEL			
CONTAINER FORM CONTAINER LOADING MATHOD				 <p>FRONT VIEW</p>	
 <p>TOP VIEW</p>					
PALLET LOADING ILLUSTRATE	SIZE	117(L)*107(w)*11(H)cm		PACKING QUANTITY	40 CARTONS/PALLET
	PALLET	PLYWOOD			
PALLET ILLUSTRATE PALLET LOADING MATHOD					
					



台達電子工業股份有限公司  
DELTA ELECTRONICS, INC.

DELTA MODEL:  
DHS-B9090-44

Drawn:  
Sheila

THESE DRAWINGS AND SPECIFICATIONS ARE THE PROPERTY OF DELTA ELECTRONICS, INC. AND SHALL NOT BE REPRODUCED OR USED AS THE BASIS FOR THE MANUFACTURE OR SELL OF APPARATUSES OR DEVICES WITHOUT PERMISSION.

CUSTOMER NAME: STD

CUSTOMER P/N: - - -

DIMENSIONAL TOLERANCES

HOLES : ±0.05 ANGLES : ±0.5°

( )	( )	( )	( )
<30	±0.25	DECIMALS	UP~100 ±0.2
>30~100	±0.35	X ±0.3	100~150 ±0.25
>100~300	±0.5	XX ±0.2	150~200 ±0.3
ABOVE 300	±0.6	XXX ±0.1	200~250 ±0.35
			250~300 ±0.4
			300~350 ±0.45
			350~400 ±0.5
			400~600 ±1.5
			600~900 ±2.4
			900~OVER ±3.1



Description: PRODUCTION SPEC.  
(PACKING ASSMEBLY)

A4  
SIZE

Part No. DHS-B9090-44-PA

REV.

00

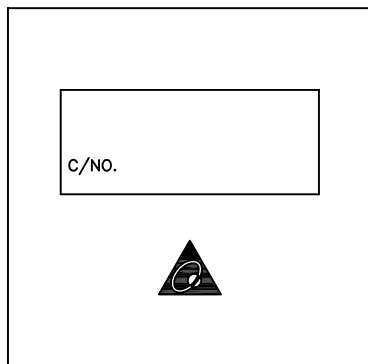
SHEET 1 OF 2 ISSUE DATE:

SCALE --- UNIT --- USED ON COOLER

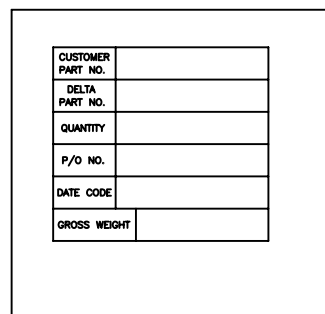
CARTON ILLUSTRATE	SIZE	498(L)*298(w)*166(H)(mm)	PACKING QUANTITY	3LAYERS/CARTON
	MATERIAL	3 LAYERS"AB" FLUTE	CARTON WEIGHT	0.8 kg (REF.)

CARTON OUTSIDE DEMONSTRATE

FRONT

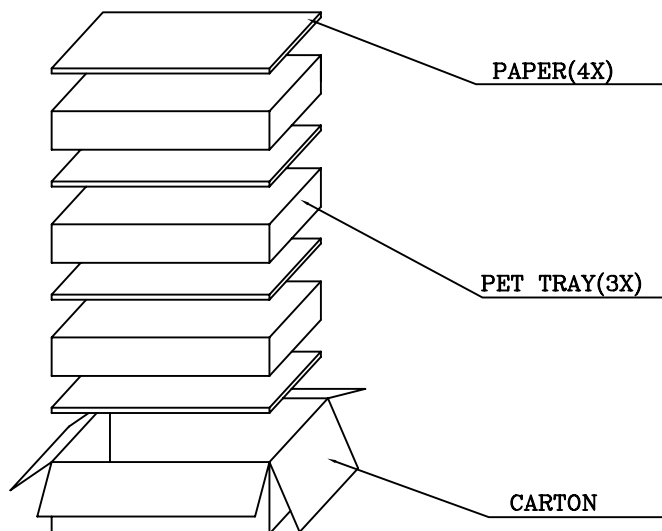


BACK



(ONE LABEL PER CARTON)

PET TRAY PACKING ILLUSTRATE	SIZE	490(L)*290(w)*41(H)(mm)	PACKING QUANTITY	8PCS/PET TRAY
	MATERIAL	PET TRAY		
	MATERIAL WEIGHT	170g (REF.)		



台達電子工業股份有限公司  
DELTA ELECTRONICS, INC.

DELTA MODEL:

DHS-B9090-44

Drawn:

Sheila

THESE DRAWINGS AND SPECIFICATIONS ARE THE PROPERTY OF DELTA ELECTRONICS, INC. AND SHALL NOT BE REPRODUCED OR USED AS THE BASIS FOR THE MANUFACTURE OR SELL OF APPARATUSES OR DEVICES WITHOUT PERMISSION.

CUSTOMER NAME:

STD

CUSTOMER P/N:

---

DIMENSIONAL TOLERANCES

HOLES :  $\pm 0.05$  ANGLES :  $\pm 0.5^\circ$

( )	( )	( )	( )
<30	$\pm 0.25$	DECIMALS	UP~100 $\pm 0.2$
>30~100	$\pm 0.35$	X $\pm 0.3$	100~150 $\pm 0.25$
>100~300	$\pm 0.5$	XX $\pm 0.2$	150~200 $\pm 0.3$
ABOVE 300	$\pm 0.6$	X.XX $\pm 0.1$	200~250 $\pm 0.35$
			250~300 $\pm 0.4$
			300~350 $\pm 0.45$
			350~400 $\pm 0.5$
			400~500 $\pm 0.5$
			500~600 $\pm 0.5$
			600~900 $\pm 2.4$
			900~OVER $\pm 3.1$



THIRD ANGLE  
PROJECTION

Description:

PRODUCTION SPEC.

A4

SIZE

Part No.

DHS-B9090-44-PA

REV.

00

SHEET 2 OF 2

ISSUE DATE:

SCALE --- UNIT --- USED ON COOLER