



Chipsmall Limited consists of a professional team with an average of over 10 year of expertise in the distribution of electronic components. Based in Hongkong, we have already established firm and mutual-benefit business relationships with customers from,Europe,America and south Asia,supplying obsolete and hard-to-find components to meet their specific needs.

With the principle of “Quality Parts,Customers Priority,Honest Operation,and Considerate Service”,our business mainly focus on the distribution of electronic components. Line cards we deal with include Microchip,ALPS,ROHM,Xilinx,Pulse,ON,Everlight and Freescale. Main products comprise IC,Modules,Potentiometer,IC Socket,Relay,Connector.Our parts cover such applications as commercial,industrial, and automotives areas.

We are looking forward to setting up business relationship with you and hope to provide you with the best service and solution. Let us make a better world for our industry!



Contact us

Tel: +86-755-8981 8866 Fax: +86-755-8427 6832

Email & Skype: info@chipsmall.com Web: www.chipsmall.com

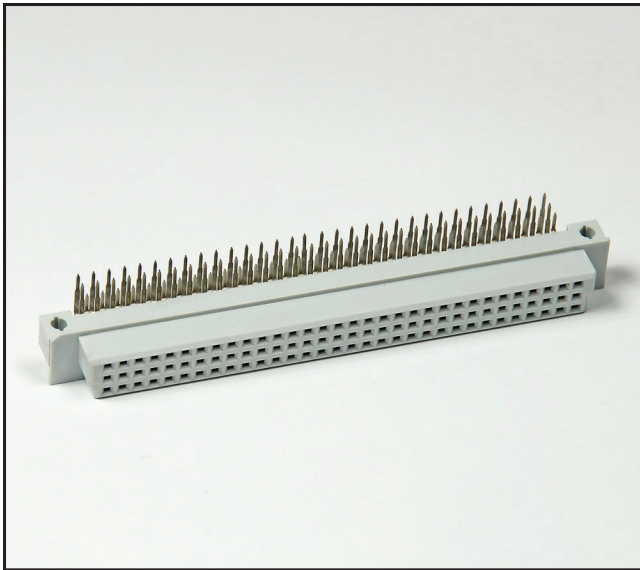
Address: A1208, Overseas Decoration Building, #122 Zhenhua RD., Futian, Shenzhen, China



3M™ DIN R-Form Socket

Right Angle, Solder Tail Termination

DIN 41612 Series



- Inverse boardmount connector
- Select load capability
- Expanded pin counts
- Optional retention clips
- Mates with C-form and R-form plugs
- See the Regulatory Information Appendix (RIA) in the “RoHS compliance” section of www.3Mconnectors.com for compliance information (RIA E1 & C1 apply)

Date Modified: October 29, 2012

TS-2308-F
Sheet 1 of 3

Physical

Insulation:

Material: Glass Filled Polyester (PBT)
Flammability: UL 94V-0
Color: Gray

Contact:

Material: Copper Alloy

Plating:

Underplating: 50 μ ” Min. Nickel
Wiping Area: See Ordering Information
Termination: See Ordering Information

Electrical

Current Rating: 3.0A at 30°C T-rise above Ambient
Contact Resistance: ≤ 20 m Ω
Insulation Resistance: $\geq 1,000$ M Ω , 100V_{DC}
Withstanding Voltage: 1,000 V_{AC} for 1 minute

Environmental

Temperature Rating: -55°C to 125°C
Process Temperature Rating: Maximum Insulator Temperature 191°C (solder wave process only)

UL File No.: E68080



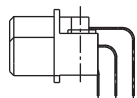
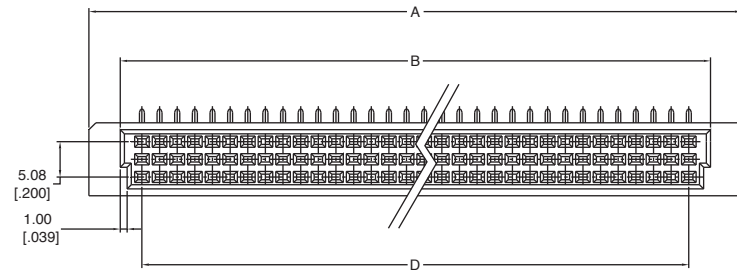
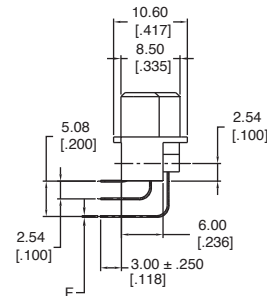
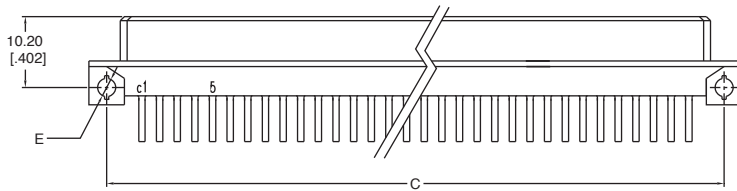
3M™ DIN R-Form Socket

Right Angle, Solder Tail Termination

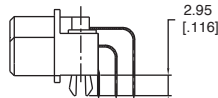
DIN 41612 Series

Table 1

Contact Quantity	Part Number	A	B	C	D	E	F
16	DIN-016RSA-XXX-XXXX	53.40[2.102]	44.40[1.748]	48.26[1.900]	38.10[1.500]	Ø2.60[Ø.102]	0.25[.010]
32	DIN-032RSB-XXX-XXXX	53.40[2.102]	44.40[1.748]	48.26[1.900]	38.10[1.500]	Ø2.60[Ø.102]	0.25[.010]
48	DIN-048RSC-XXX-XXXX	53.40[2.102]	44.40[1.748]	48.26[1.900]	38.10[1.500]	Ø2.60[Ø.102]	0.25[.010]
32	DIN-032RSD-XXX-XXXX	53.40[2.102]	44.40[1.748]	48.26[1.900]	38.10[1.500]	Ø2.60[Ø.102]	0.25[.010]
16	DIN-016RSE-XXX-XXXX	53.40[2.102]	44.40[1.748]	48.26[1.900]	38.10[1.500]	Ø2.60[Ø.102]	0.25[.010]
32	DIN-032RSA-XXX-XXXX	94.00[3.701]	85.00[3.346]	88.90[3.500]	78.74[3.100]	Ø2.60[Ø.102]	0.25[.010]
64	DIN-064RSB-XXX-XXXX	94.00[3.701]	85.00[3.346]	88.90[3.500]	78.74[3.100]	Ø2.60[Ø.102]	0.25[.010]
96	DIN-096RSC-XXX-XXXX	94.00[3.701]	85.00[3.346]	88.90[3.500]	78.74[3.100]	Ø2.60[Ø.102]	0.25[.010]
64	DIN-064RSD-XXX-XXXX	94.00[3.701]	85.00[3.346]	88.90[3.500]	78.74[3.100]	Ø2.60[Ø.102]	0.25[.010]
32	DIN-032RSE-XXX-XXXX	94.00[3.701]	85.00[3.346]	88.90[3.500]	78.74[3.100]	Ø2.60[Ø.102]	0.25[.010]
40	DIN-040RSA-XXX-XXXX	114.32[4.501]	105.32[4.146]	109.22[4.300]	99.06[3.900]	Ø2.80[Ø.110]	0.60[.024]
80	DIN-080RSB-XXX-XXXX	114.32[4.501]	105.32[4.146]	109.22[4.300]	99.06[3.900]	Ø2.80[Ø.110]	0.60[.024]
120	DIN-120RSC-XXX-XXXX	114.32[4.501]	105.32[4.146]	109.22[4.300]	99.06[3.900]	Ø2.80[Ø.110]	0.60[.024]
80	DIN-080RSD-XXX-XXXX	114.32[4.501]	105.32[4.146]	109.22[4.300]	99.06[3.900]	Ø2.80[Ø.110]	0.60[.024]
40	DIN-040RSE-XXX-XXXX	114.32[4.501]	105.32[4.146]	109.22[4.300]	99.06[3.900]	Ø2.80[Ø.110]	0.60[.024]



SR1
WITHOUT RETENTION CLIP



RR1L
WITH "B" RETENTION CLIPS
for .062 PCB thickness

mm
[inch]

Tolerance Unless Noted			
	X.	.X	.XX
mm	± 0.50	± 0.25	± 0.15

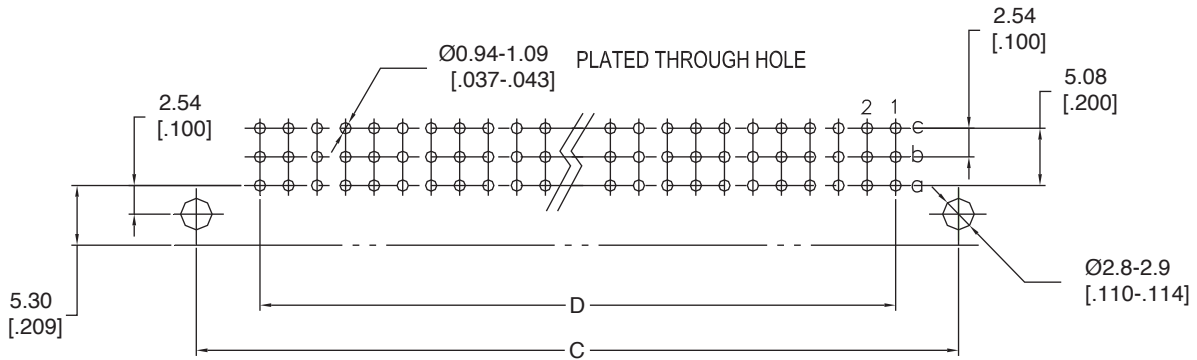
[] Dimension for Reference Only

TS-2308-F
Sheet 2 of 3

3M™ DIN R-Form Socket

Right Angle, Solder Tail Termination

DIN 41612 Series



RECOMMENDED PCB LAYOUT

Ordering Information

DIN - XXXRS X - XXX - XX

Contact Quantity
SEE TABLE 1

A = A Row only (see note)
B = Rows A & C Filled
C = Rows A, B & C Filled
D = Rows A & B Filled
E = B Row only (see note)

Plating Options:

SH = 1 - 3 µm Gold on Contact
120 - 200 µm Matte Tin on Terminal

FJ = 10 - 20 µm Gold on Contact
120 - 200 µm Matte Tin on Terminal

KR = 30 - 40 µm Gold on Contact
120 - 200 µm Matte Tin on Terminal

HM = 3 µm Gold on Contact, 7 µm Min. PdNi
120 - 200 µm Matte Tin on Terminal

Termination Options:

SR1 = 3.00 [.118]

RR1L = 3.00 [.118] with 'B' retention clips

Note: A and E options are currently not covered in UL File No. E68080

• This diagram serves only for Part Number descriptive definitions.

PLEASE CONTACT YOUR LOCAL SALES REPRESENTATIVE FOR CUSTOMER SPECIFIC PRODUCT CONFIGURATIONS.

TS-2308-F
Sheet 3 of 3

3M

Electronic Solutions Division
Interconnect Solutions
<http://www.3Mconnectors.com/>

3M is a trademark of 3M Company.
For technical, sales or ordering information call
800-225-5373