



Chipsmall Limited consists of a professional team with an average of over 10 year of expertise in the distribution of electronic components. Based in Hongkong, we have already established firm and mutual-benefit business relationships with customers from,Europe,America and south Asia,supplying obsolete and hard-to-find components to meet their specific needs.

With the principle of “Quality Parts,Customers Priority,Honest Operation,and Considerate Service”,our business mainly focus on the distribution of electronic components. Line cards we deal with include Microchip,ALPS,ROHM,Xilinx,Pulse,ON,Everlight and Freescale. Main products comprise IC,Modules,Potentiometer,IC Socket,Relay,Connector.Our parts cover such applications as commercial,industrial, and automotives areas.

We are looking forward to setting up business relationship with you and hope to provide you with the best service and solution. Let us make a better world for our industry!



Contact us

Tel: +86-755-8981 8866 Fax: +86-755-8427 6832

Email & Skype: info@chipsmall.com Web: www.chipsmall.com

Address: A1208, Overseas Decoration Building, #122 Zhenhua RD., Futian, Shenzhen, China





Push every boundary.™

CSR μ Energy® Development Kits

Starter Development Kit



Product Overview

CSR is the industry leader for Bluetooth Smart solutions delivered through the [CSR \$\mu\$ Energy](#) product family.

CSR introduces a simplified yet comprehensive development kit for designers who need to get prototypes of their Bluetooth Smart products up and running fast then move quickly to production.

Product Highlights

The kit provides a complete set of tools for software development, board design and production test:

- Target board with CSR μ Energy IC on reference module, USB programming interface and interfaces for breaking out I/O to application-specific sensors and actuators
 - CSR1010, CSR1011 and CSR1012 variants*
- Fully licensed CSR xIDE software development environment
- Example applications for popular Bluetooth Smart profiles
- Example host applications for iOS and Android platforms
- Datasheets for CSR μ Energy ICs
- Hardware design guidelines
- Manufacturing packs for module reference designs
- Production test and configuration tools

The Target board is normally powered from the host USB connection but can also be run standalone from an on-board coin cell (not included) to allow power measurements to be made.

Kit Contents

The Starter Dev Kit contains the following components:

- Target board
- Mini-USB cable to connect to Host PC USB port
- Setup and Quick Start Guides
- CSR μ Energy Starter Dev Kit CD-ROM



Applications

Human Interface Devices including:

- Keyboard
- Mouse and touchpad
- Remote control

Sports and Fitness devices including:

- Heart rate monitor
- Foot pod
- Cycle speed, power and cadence

Health devices including:

- Glucose meter

CSR μ Energy[®] Development Kits

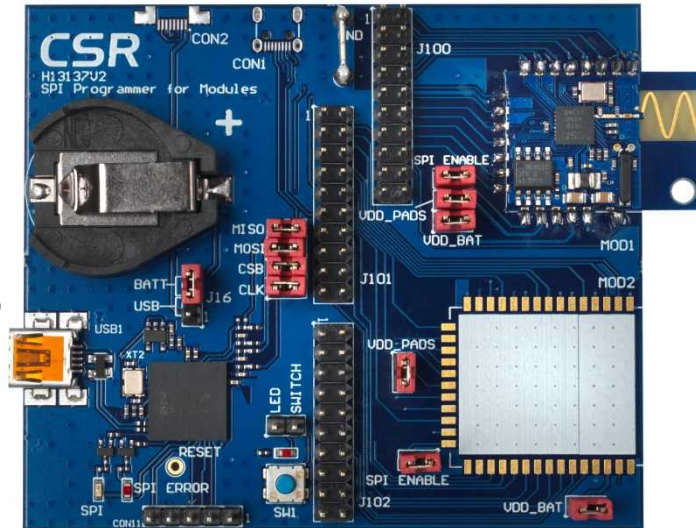
Starter Development Kit

Starter Kit Target Board

- Factory-fitted with CSR1010, CSR1011 or CSR1012 module
- USB or CR2032 battery powered (link selectable).
- USB SPI interface to development PC
- 1x push-button
- 1x LED
- 1x Headers for CSR1010/CSR1012 I/O
- 2x Headers for CSR1011 I/O
- 80 x 68 mm PCB area

CSR1010 kit part no. DK-CSR1010-10169

*CSR1011 and CSR1012 kit versions are in development.



CSR1010
or
CSR1012
Module
Site

CSR1011
Module
(site)

For tech info visit: forum.csr.com & wiki.csr.com

Reference Modules

Common features:

- CE and FCC pre-qualified designs
- FR4 PCB layout
- Single-sided PCB mounting
- PCB antenna and passive filter

CSR1010 Reference Module

- 2-layer PCB (25.5 x 18.0 mm)

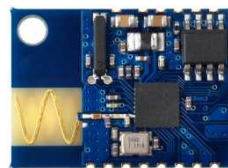
CSR1011 Reference Module

- 2-layer PCB (35.0 x 20.0 mm)

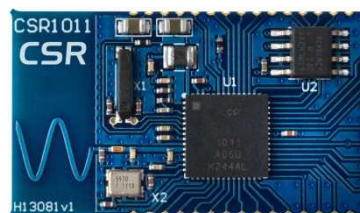
CSR1012 Reference Module

- 4-layer PCB (17.7 x 7.6 mm active area)

A Daughter board featuring 5 representative MEMS parts is in development, which will connect to the I/O Headers of all modules.



CSR1010



CSR1011



CSR1012

Ordering Information

Visit the website www.csr.com for a [list of distributors and representatives](#) [Contact > Sales Representatives] and for further information on other related products.

Unless otherwise stated, words and logos marked with [™] or [®] are trademarks registered or owned by CSR plc and/or its affiliates. Bluetooth[®] and the Bluetooth logos are trademarks owned by Bluetooth SIG, Inc. and licensed to CSR. Other products, services and names used in this document may have been trademarked by their respective owners. The publication of this information does not imply that any licence is granted under any patent or other rights owned by CSR plc or its affiliates. CSR reserves the right to make technical changes to its products as part of its development programme. While every care has been taken to ensure the accuracy of the contents of this document, CSR cannot accept responsibility for any errors.

Cambridge Silicon Radio Limited. Registered in England and Wales 3665875. | Churchill House, Cambridge Business Park, Cowley Road, Cambridge CB4 0WZ

Tel: +44 1223 692000 | Fax: +44 1223 692001 | Web: www.csr.com | Blog: www.csr.com/blog | Twitter: @CSR_plc

CSR

Push every boundary.™