



Chipsmall Limited consists of a professional team with an average of over 10 year of expertise in the distribution of electronic components. Based in Hongkong, we have already established firm and mutual-benefit business relationships with customers from,Europe,America and south Asia,supplying obsolete and hard-to-find components to meet their specific needs.

With the principle of “Quality Parts,Customers Priority,Honest Operation,and Considerate Service”,our business mainly focus on the distribution of electronic components. Line cards we deal with include Microchip,ALPS,ROHM,Xilinx,Pulse,ON,Everlight and Freescale. Main products comprise IC,Modules,Potentiometer,IC Socket,Relay,Connector.Our parts cover such applications as commercial,industrial, and automotives areas.

We are looking forward to setting up business relationship with you and hope to provide you with the best service and solution. Let us make a better world for our industry!



Contact us

Tel: +86-755-8981 8866 Fax: +86-755-8427 6832

Email & Skype: info@chipsmall.com Web: www.chipsmall.com

Address: A1208, Overseas Decoration Building, #122 Zhenhua RD., Futian, Shenzhen, China





Push every boundary.™

CSR μ Energy® Development Kits

Remote Control Demonstrator



Product Overview

CSR, industry leader for Bluetooth Smart, has now enabled CSR μ Energy in remote controls.

The CSR remote control kits provide a means to evaluate and develop a full system solution based upon CSR1011™ and CSR8510™ chips. Advanced remote control features such as gesture recognition and voice control are now possible with the battery life and responsiveness users have come to expect with today's Smart devices.

In collaboration with Hillcrest Labs, CSR remote control kits have been created to work seamlessly with Hillcrest's Freespace® MotionEngine™ software (available separately from Hillcrest).

The evaluation kit is prepackaged in remote control plastics for easy and simple demonstration and comes with a USB dongle and PC software to be able to evaluate and test performance.

The development kit includes a flexible and modular CSR1011 based development board fitted with a Hillcrest sensor board, voice command capability, configurable buttons and a conventional IR transmitter. To ease remote control development, the kit also includes a GUI based application to auto-generate code for the CSR1011 according to an ever-growing hardware library of sensors and components. Also included is a CSR8510 USB dongle to aid successful hardware integration.

Applications

The kits demonstrate the CSR1011 and CSR8510 capability for advanced remote controls for:

- TVs
- Set-top-boxes
- Audio Visual
- Gaming
- PCs

Product Highlights

- Out-of-the-box solution for CSR μ Energy remote control
- Gesture control using Hillcrest Motion Engine
- Voice command solution
- Host wake-up function
- Evaluation kit with remote in plastic housing
- Development kit with modular PCB, programming tools and BlueZ host tools

CSR μ Energy® Development Kits

Remote Control Demonstrator

Remote Control Evaluation Kit

Kit Part Number: DK-CSR1011-10147

Each kit comprises:

- Remote control
- USB Bluetooth Dongle
- PC software on CD-ROM



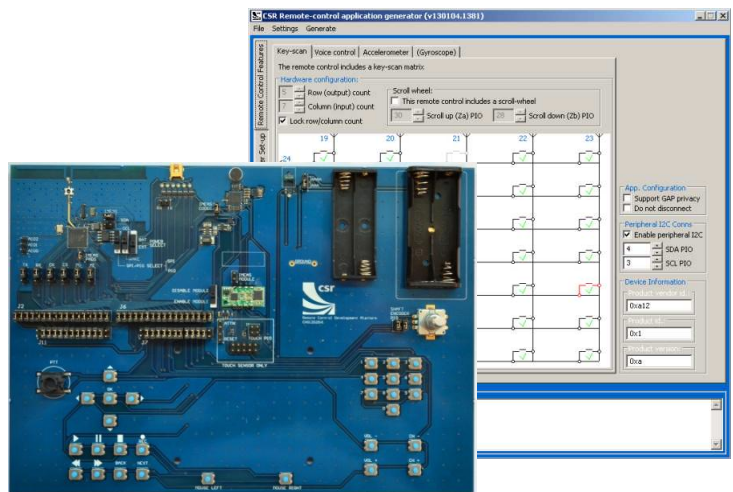
PC Software on CD-ROM

Remote Control Development Kit

Kit part number: DK-CSR1011-10148

Each kit comprises:

- CSR1011 main board
- Hillcrest motion sensor
- Keypad
- ADC module for voice commands
- IR module
- USB Bluetooth Dongle
- Development and programming tools
- BlueZ Host tools



Development Kit and Software

Ordering Information

Visit the website www.csr.com for a [list of distributors and representatives](#) [Contact > Sales Representatives] or request more information from a CSR representative [Contact > CSR Customer Support]. Visit the website for further information on other related products.

Unless otherwise stated, words and logos marked with [™] or [®] are trademarks registered or owned by CSR plc and/or its affiliates. Bluetooth[®] and the Bluetooth logos are trademarks owned by Bluetooth SIG, Inc. and licensed to CSR. Other products, services and names used in this document may have been trademarked by their respective owners. The publication of this information does not imply that any licence is granted under any patent or other rights owned by CSR plc or its affiliates. CSR reserves the right to make technical changes to its products as part of its development programme. While every care has been taken to ensure the accuracy of the contents of this document, CSR cannot accept responsibility for any errors.

Cambridge Silicon Radio Limited. Registered in England and Wales 3665875. | Churchill House, Cambridge Business Park, Cowley Road, Cambridge CB4 0WZ

Tel: +44 1223 692000 | Fax: +44 1223 692001 | Web: www.csr.com | Blog: www.csr.com/blog | Twitter: @CSR_plc



Push every boundary.™