



Chipsmall Limited consists of a professional team with an average of over 10 year of expertise in the distribution of electronic components. Based in Hongkong, we have already established firm and mutual-benefit business relationships with customers from,Europe,America and south Asia,supplying obsolete and hard-to-find components to meet their specific needs.

With the principle of “Quality Parts,Customers Priority,Honest Operation,and Considerate Service”,our business mainly focus on the distribution of electronic components. Line cards we deal with include Microchip,ALPS,ROHM,Xilinx,Pulse,ON,Everlight and Freescale. Main products comprise IC,Modules,Potentiometer,IC Socket,Relay,Connector.Our parts cover such applications as commercial,industrial, and automotives areas.

We are looking forward to setting up business relationship with you and hope to provide you with the best service and solution. Let us make a better world for our industry!



## Contact us

Tel: +86-755-8981 8866 Fax: +86-755-8427 6832

Email & Skype: info@chipsmall.com Web: www.chipsmall.com

Address: A1208, Overseas Decoration Building, #122 Zhenhua RD., Futian, Shenzhen, China



Compensated High Current Choke, 1-phase



**Description**

- Current compensated choke
- 1-phase choke
- Flexible wire
- Flange for mounting onto printed circuit board
- Fully potted resin

**Standards**

- EN 60938
- UL 1283
- CSA 22.2 no 8

**Applications**

- Placed in front of frequency converter
- Stepper motor drives
- UPS-systems
- Inverter

**Weblinks**

[pdf datasheet](#), [html-datasheet](#), [General Product Information](#), [Approvals](#), [CE declaration of conformity](#), [RoHS](#), [CHINA-RoHS](#), [REACH](#), [Distributor-Stock-Check](#), [Detailed request for product](#)

**Technical Data**

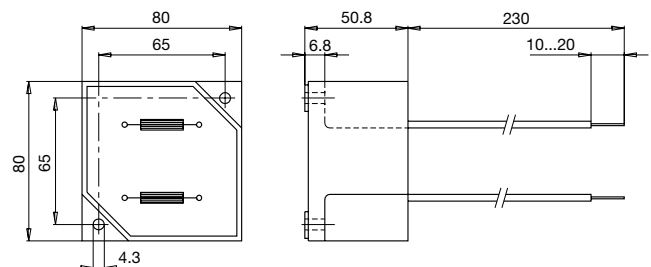
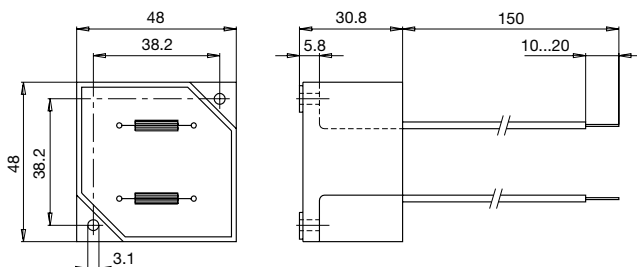
Rated voltage	up to 540 VAC	Test Voltage	2.5 kV, 50 Hz, 2 sec, winding to winding
	up to 760 VDC	Isolation Voltage	2.5 kV, 50 Hz, 2 sec, winding to ambient
Rated Current	10 - 50 A @ Ta 40 °C	Climatic Category	25/100/21 acc. to IEC 60068-1
Rated inductance	1.1 - 12 mH, Tol. -30% +50%	Allowable Operation Temp.	-25 °C to 100 °C
Power Operating Frequency	50 - 400 Hz		
Terminal Type	Flexible wire		
Weight	145 - 1865 g		
Material: Housing	UL 94V-0		
Sealing Compound	UL 94V-0		

Detailed information on product approvals, code requirements, usage instructions and detailed test conditions can be looked up in [General Product Information](#)

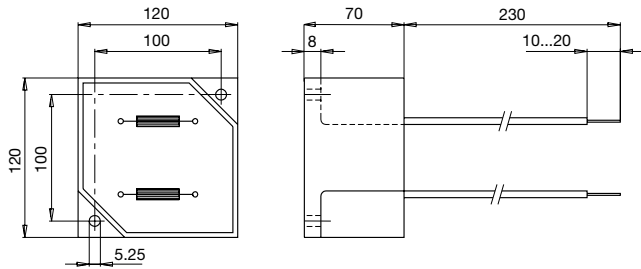
**Dimension**

Case 29-2W

Case 31-2W

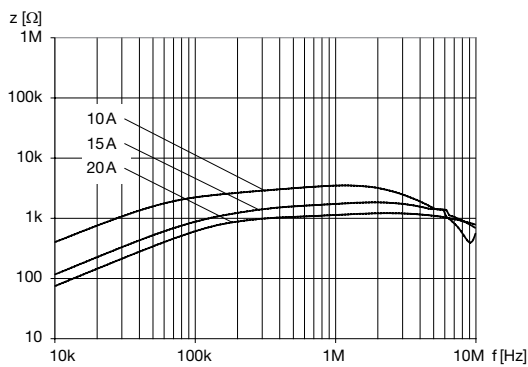


## Case 33-2W

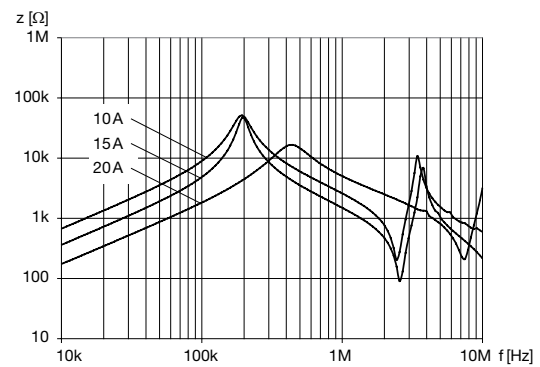


## Impedance curves

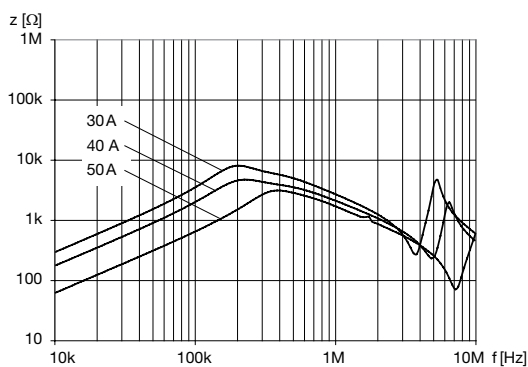
DKIP\_0229\_xxxx



DKIP\_0231\_xxxx



DKIP\_0233\_xxxx



## All Variants

$I_n$ [A]	$L_n$ [mH]	$R_{Cu}$ [mΩ]	Power <sub>loss</sub> [W]	$f_{RES}$ [MHz]	Copper $\phi$ [mm]	Weight [g]	Housings	Packing unit [pcs.]	Order Number
10	5	18	3.6	0.35	1.25	145 g	29-2W	12	<a href="#">DKIP-0229-1005</a>
15	2	8	3.6	0.6	1.6	145 g	29-2W	12	<a href="#">DKIP-0229-1502</a>
20	1.1	6	4.8	2.5	1.8	145 g	29-2W	12	<a href="#">DKIP-0229-2001</a>
10	12	40	8	0.15	1.25	477 g	31-2W	2	<a href="#">DKIP-0231-1012</a>
15	5	17	7.6	0.33	1.6	525 g	31-2W	2	<a href="#">DKIP-0231-1505</a>
20	3	10	8	0.55	1.8	506 g	31-2W	2	<a href="#">DKIP-0231-2003</a>
30	5	12.5	22.5	0.26	2.24	1600 g	33-2W	1	<a href="#">DKIP-0233-3005</a>

$I_n$ [A]	$L_n$ [mH]	$R_{cu}$ [mΩ]	Power <sub>loss</sub> [W]	$f_{RES}$ [MHz]	Copper ø [mm]	Weight [g]	Housings	Packing unit [pcs.]	Order Number
40	3	6	19.2	0.3	1.5 x 4.5	1830g	33-2W	1	<a href="#">DKIP-0233-4003</a>
50	2	5	25	0.25	1.5 x 4.5	1865g	33-2W	1	<a href="#">DKIP-0233-5002</a>

Most Popular.

Availability for all products can be searched real-time:<http://www.schurter.com/en/Stock-Check/Stock-Check-SCHURTER>