



Chipsmall Limited consists of a professional team with an average of over 10 year of expertise in the distribution of electronic components. Based in Hongkong, we have already established firm and mutual-benefit business relationships with customers from,Europe,America and south Asia,supplying obsolete and hard-to-find components to meet their specific needs.

With the principle of “Quality Parts,Customers Priority,Honest Operation,and Considerate Service”,our business mainly focus on the distribution of electronic components. Line cards we deal with include Microchip,ALPS,ROHM,Xilinx,Pulse,ON,Everlight and Freescale. Main products comprise IC,Modules,Potentiometer,IC Socket,Relay,Connector.Our parts cover such applications as commercial,industrial, and automotives areas.

We are looking forward to setting up business relationship with you and hope to provide you with the best service and solution. Let us make a better world for our industry!



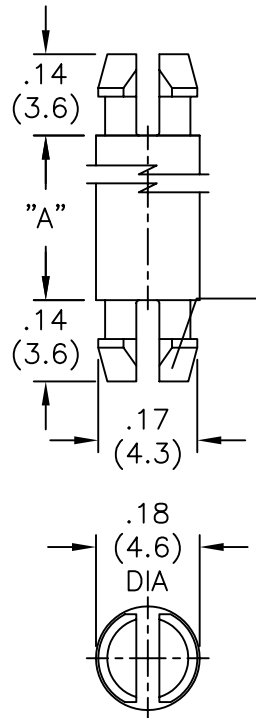
## Contact us

Tel: +86-755-8981 8866 Fax: +86-755-8427 6832

Email & Skype: info@chipsmall.com Web: www.chipsmall.com

Address: A1208, Overseas Decoration Building, #122 Zhenhua RD., Futian, Shenzhen, China





TO SNAP-LOCK IN A .152 (3.86)  
 $\pm .002$  (0.05) DIA. HOLE, IN A  
 .062 (1.57) THICK BOARD/CHASSIS  
 (BOTH ENDS)

PART NO.	DIM. "A" $\pm .015$ (0.4)
DLMSP-2-01	1/8 (3.2)
DLMSP-3-01	3/16 (4.8)
DLMSP-4-01	1/4 (6.4)
DLMSP-5-01	5/16 (7.9)
DLMSP-6-01	3/8 (9.5)
DLMSP-7-01	7/16 (11.1)
DLMSP-8-01	1/2 (12.7)
DLMSP-9-01	9/16 (14.3)
DLMSP-10-01	5/8 (15.9)
DLMSP-12-01	3/4 (19.1)
DLMSP-14-01	7/8 (22.2)
DLMSP-16-01	1 (25.4)
DLMSP-18-01	1-1/8 (28.6)
DLMSP-20-01	1-1/4 (31.8)
DLMSP-22-01	1-3/8 (34.9)
DLMSP-24-01	1-1/2 (38.1)

NOTES:

- MAT'L: NYLON 66 (RMS-01).  
 FLAME RETARDANT: NYLON (RMS-19),  
 BY SPECIAL ORDER.
- COLOR: NATURAL.

TITLE: DUAL LOCKING MINI SUPPORT POST			DWG IN IN (MM)		FINAL	
D	CHANGED FILE NUMBER	SM 05.01.01	FILE #	DLMSP	DWN: P.B.	APP:
C	MAT'L RMS-19 ADDED	J.L. 12.29.97	MAT'L:	SEE NOTES	DT: 04-07-95	DT:
B	TITLE WAS MINI-SUPPORT POST, SPECIAL	PB 05.09.95	RE:	RICHCO, INC.	RICHCO INC.	
A	CONVERTED TO ACAD	PB 04.07.95			PO BOX 804238, CHICAGO, 60680	
REV	DESCRIPTION	ENGR DATE			(773) 539-4060	
					PART # SEE TABLE	
					PRINT TYPE CA	