



Chipsmall Limited consists of a professional team with an average of over 10 year of expertise in the distribution of electronic components. Based in Hongkong, we have already established firm and mutual-benefit business relationships with customers from,Europe,America and south Asia,supplying obsolete and hard-to-find components to meet their specific needs.

With the principle of "Quality Parts,Customers Priority,Honest Operation,and Considerate Service",our business mainly focus on the distribution of electronic components. Line cards we deal with include Microchip,ALPS,ROHM,Xilinx,Pulse,ON,Everlight and Freescale. Main products comprise IC,Modules,Potentiometer,IC Socket,Relay,Connector.Our parts cover such applications as commercial,industrial, and automotives areas.

We are looking forward to setting up business relationship with you and hope to provide you with the best service and solution. Let us make a better world for our industry!



Contact us

Tel: +86-755-8981 8866 Fax: +86-755-8427 6832

Email & Skype: info@chipsmall.com Web: www.chipsmall.com

Address: A1208, Overseas Decoration Building, #122 Zhenhua RD., Futian, Shenzhen, China



75 to 240W, 24V Output DIN Rail Mount Power Supplies

Features

- ◆ UL508 Listed
- ◆ Conducted and Radiated EMI, Class B
- ◆ Input Transient Protection, IEC61000-4
- ◆ Semi F47 Compliant (DLP180 & 240 only)



Key Market Segments & Applications



Industrial



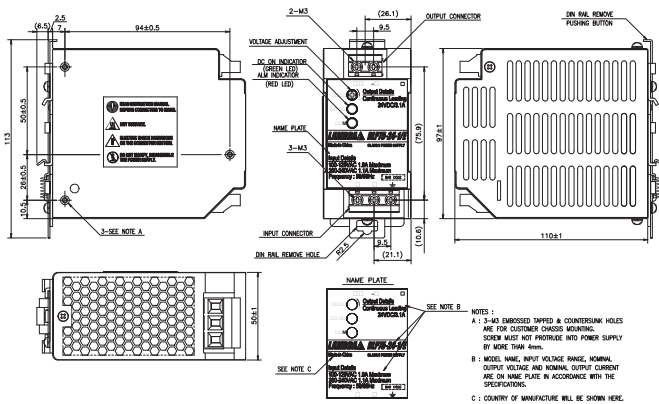
RoHS

Specifications		DLP75-24-1/E	DLP100-24-1/E	DLP120-24-1/E	DLP180-24-1/E	DLP240-24-1/E
Output Voltage	V	24	24	24	24	24
Output Current	A	3.1	4.1	5.0	7.5	10
Output Power	W	75	98.4	120	180	240
Output Voltage Adjustment	V	21.6 - 28				
Load Regulation	-	192mV				
Line Regulation	-	120mV				
Ripple/Noise (0-600C)	mV	240				
AC Input Voltage & Frequency	-	85-132/170-265VAC, 47-63Hz Auto select			85-265VAC (47-63Hz) or 120-370VDC ⁽¹⁾	
Input Current 100/230VAC	A	1.7/0.8	2.3/1.2	2.4/1.3	2.3/1.0	3.0/1.3
Efficiency 100/230VAC	%	81/83	82/85	83/85	84/87	82/86
Power Factor	-	Meets EN61000-3-2 (DLP180, 240: >0.95)				
Inrush Current (Typ) 100/230VAC	A	20/45				
Leakage Current	mA	Less than 0.75mA				
Hold-up Time 100/230VAC	ms	20/30 (Semi F47 Compliance, DLP 180 & 240 only)				
Overcurrent Protection	-	>105%, Fold Back	>105%, Constant Current (/C2 3.75A)			
Overvoltage Protection	-	30-35V, latching, cycle AC line to reset				
LED Indicators	-	Green LED = DC ok Red LED = overcurrent				
Operating Temperature (2)	°C	Convection cooled, -10°C to 60°C, derate linearly to 60% load from 50 to 60°C				
Storage Temperature	°C	-30°C~+85°C				
Humidity (Non-Condensing)	%RH	30-90% operating 10-95% non operating				
Withstand Voltage	-	Input - Ground 2kVAC, Input to Output 3kVAC, Output - Ground 500VAC				
Vibration	-	9.8m/s ² (1.0G) at DIN rail; (10-55Hz: 9.8m/s ² Constant, X,Y, Z each 1 hour)				
Shock	-	196m/s ² (20G)				
Safety Agency Approvals	-	UL508, UL60950-1, CSA60950-1, EN60950-1, CE, EN50178 Cat III (Pri)				
Conducted EMI	-	FCC-B, EN55011/EN55022-B, VCCI-B; Meets IEC61000-4-1				
Radiated EMI	-	EN55011/EN55022-B, FCC-Class B, VCCI-B				
ESD	-	IEC61000-4-2 ±10kV (Air), ±5kV (Contact)				
Radiated RFI	-	IEC61000-4-3 80-1000MHz, 12V/m 80% AM 1kHz				
Fast Transient Burst	-	IEC61000-4-4 2.4kV 5kHz				
Lightning Surge	-	IEC61000-4-5 4.4kV, 1.2x50µs (Common Mode) 2.4kV 1.2x50µs (Normal)				
Conducted RFI	-	IEC61000-4-6 150kHz-80MHz, 12V, 80% AM 1kHz				
Magnetic Field	-	IEC61000-4-8 36A/m				
Voltage Dips	-	IEC61000-4-11 70% 10ms, 40% 100ms, 0% 5s				
Size	mm	50 x 97 x 110	60 x 97 x 110	60 x 97 x 110	80 x 97 x 110	120 x 97 x 110
Weight	g	470	540	540	780	1000
Warranty	yrs	3 Years				

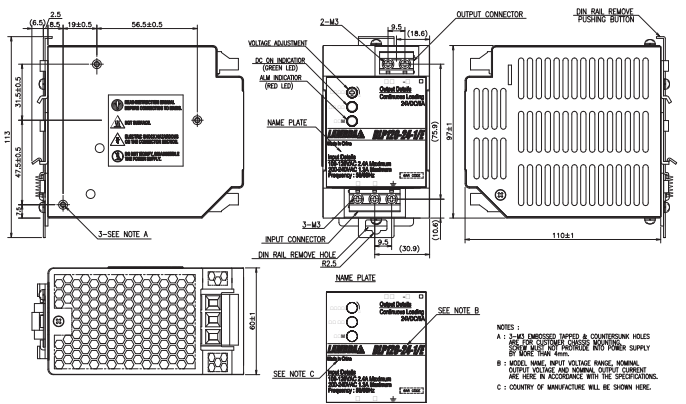
(1) DC input is not safety approved

(2) DLP240-24-1/E, 170-265VAC: -10°C~+70°C, derated linearly to 60% load from 50° to 70°C.

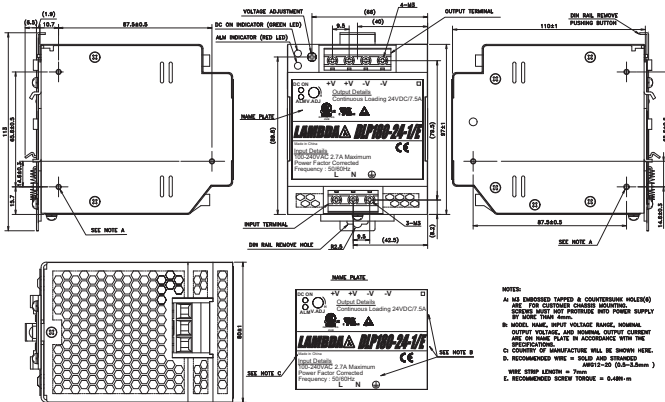
DLP75 Outline



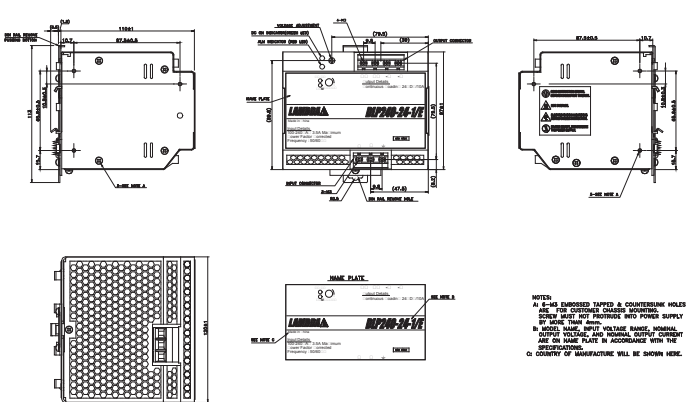
DLP100/120 Outline



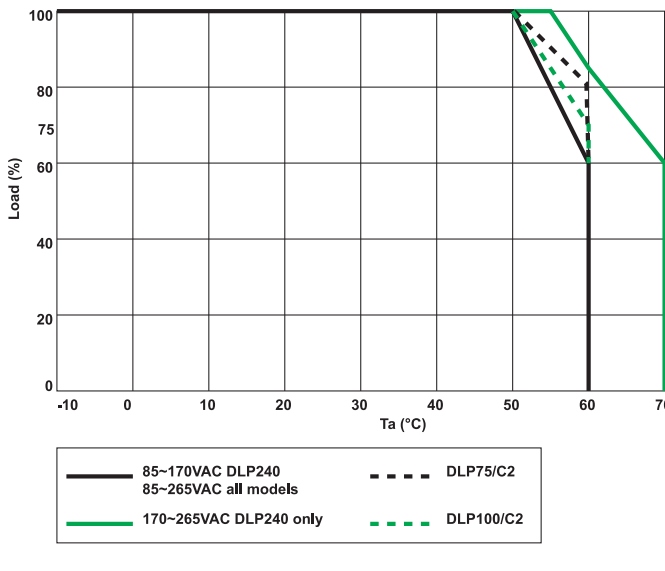
DLP180 Outline



DLP240 Outline



Derating Curve



Other Industrial Products

DPP/DSP	10W to 480W Single Output DIN Rail
DRB/DRF	15W to 480W high Efficiency
DPX	DC-DC Din Rail
HWS	15W to 1800W Single Output

Snap-on Mounting: snap onto DIN Rail TS35/7.5 or TS35/15. (no tools required)

For Additional Information, please visit us.tdk-lambda.com/lp/products/dlp-series.htm

