



Chipsmall Limited consists of a professional team with an average of over 10 year of expertise in the distribution of electronic components. Based in Hongkong, we have already established firm and mutual-benefit business relationships with customers from,Europe,America and south Asia,supplying obsolete and hard-to-find components to meet their specific needs.

With the principle of “Quality Parts,Customers Priority,Honest Operation,and Considerate Service”,our business mainly focus on the distribution of electronic components. Line cards we deal with include Microchip,ALPS,ROHM,Xilinx,Pulse,ON,Everlight and Freescale. Main products comprise IC,Modules,Potentiometer,IC Socket,Relay,Connector.Our parts cover such applications as commercial,industrial, and automotives areas.

We are looking forward to setting up business relationship with you and hope to provide you with the best service and solution. Let us make a better world for our industry!



## Contact us

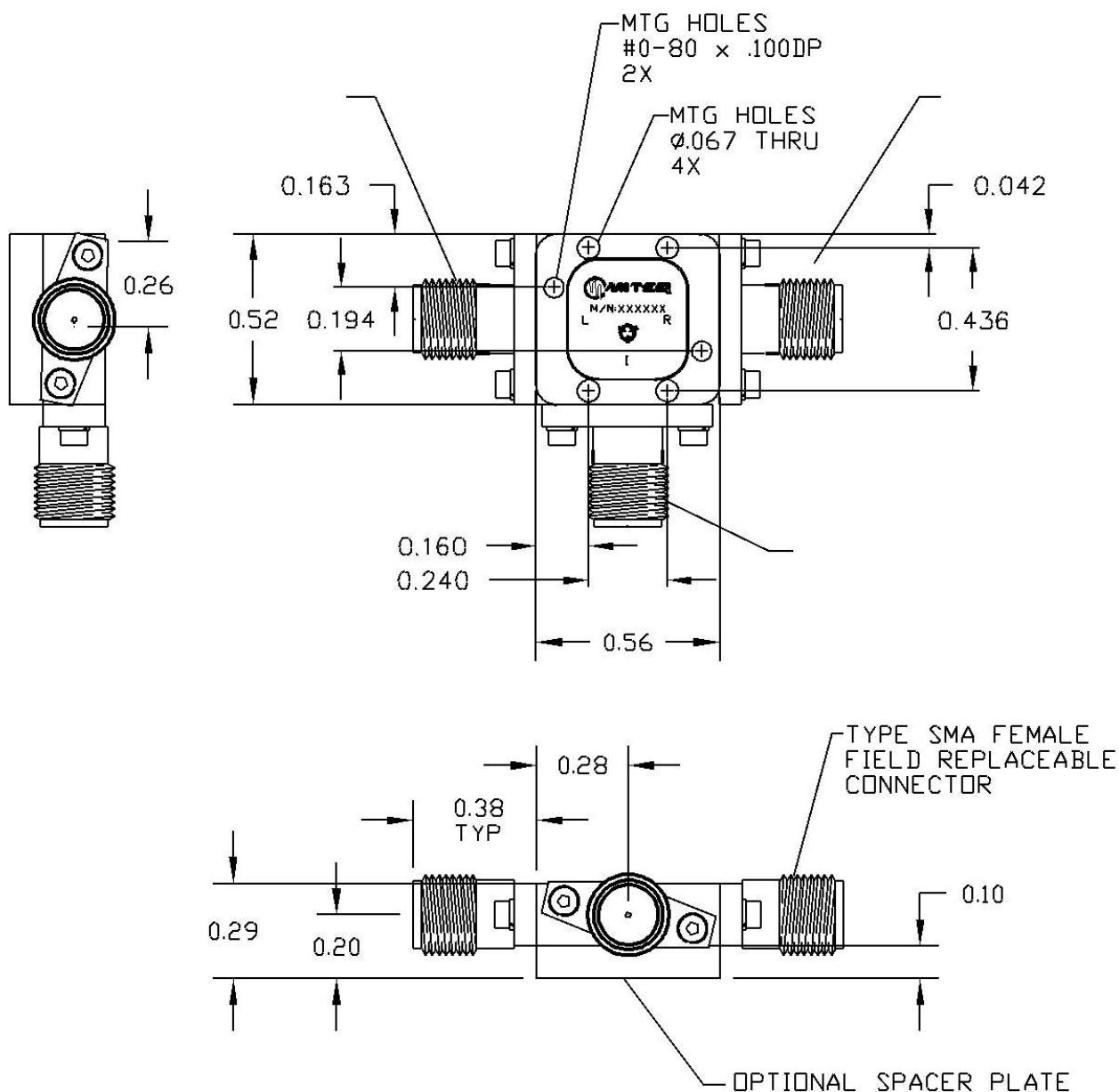
Tel: +86-755-8981 8866 Fax: +86-755-8427 6832

Email & Skype: [info@chipsmall.com](mailto:info@chipsmall.com) Web: [www.chipsmall.com](http://www.chipsmall.com)

Address: A1208, Overseas Decoration Building, #122 Zhenhua RD., Futian, Shenzhen, China



DASH NO.	APPLICATION		REVISIONS			
	NEXT ASSY	USED ON	LTR	DESCRIPTION	DATE	APPROVED
			C	ASQL-Format, REDRAWN Add missing	4/1/2006	L. Cardinal
			C	ADD MISSING MTG HOLE IMAGE & INFO		



FINISH: NICKEL per MIL-C-26074

ALL PAGES ARE OF  
ORIGINAL ISSUE (A)  
EXCEPT AS NOTED.CONTR NO.  
MQ0146748PREP BY NAME  
AL DATE  
9/19/1991UNLESS OTHERWISE SPECIFIED  
DIMENSIONS ARE IN INCHES (MM)  
TOLERANCES ON  
DECIMAL .XX±.01 .XXX±.005 ANGLES  
±0°30'CHKD BY  
L. Cardinal 4/6/2006PROJ ENGR  
S. Spohrer 4/7/2006

APPROVAL (PROJ)

APPROVAL (GOVT)



100 Davids Drive, Hauppauge, New York 11788

OUTLINEDRAWING  
TRIPLE BALANCED MIXER  
W1 PKGSIZE  
A

CODE IDENT. NO.

33592

118190

SCALE

REV

C

SHEET

1 OF

1